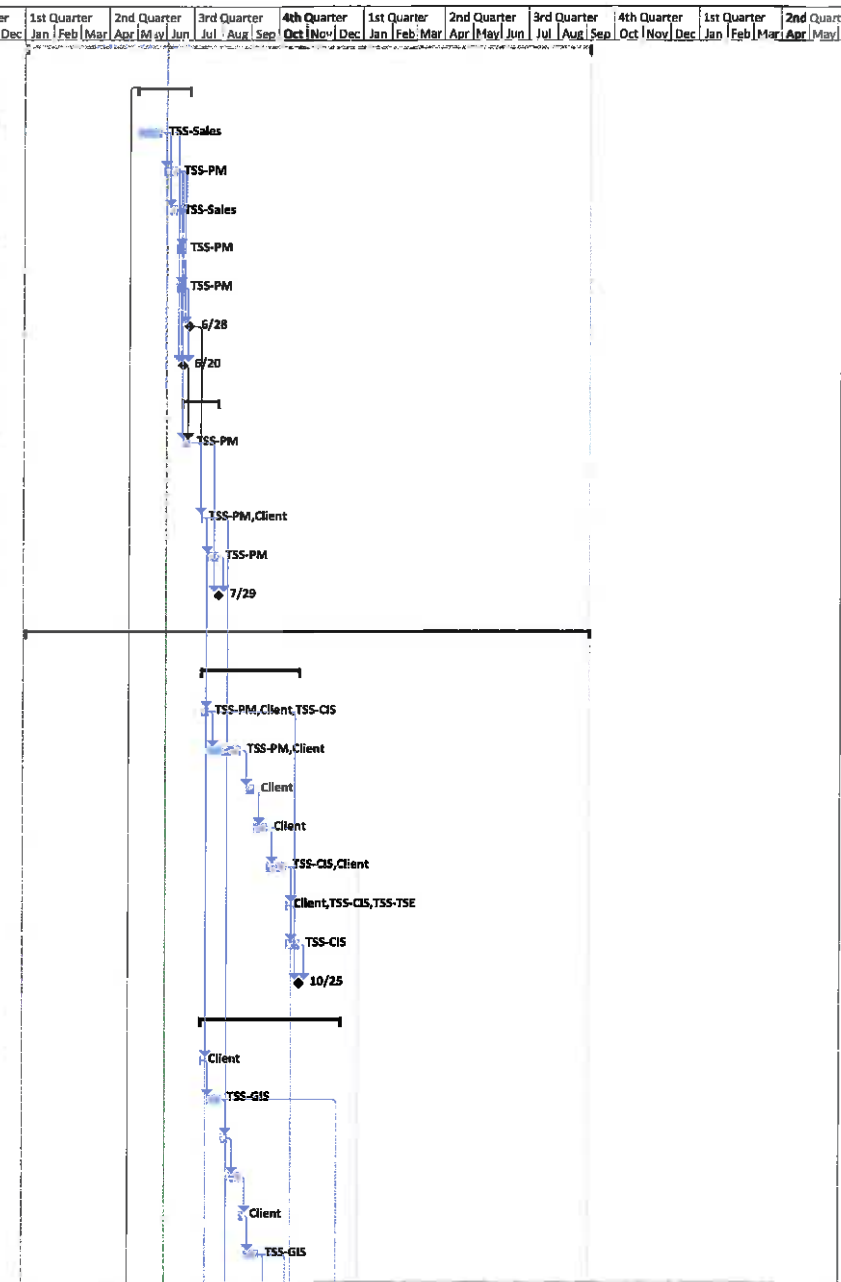


ID	WBS	Notes	Task Name	Duration	Start	Finish	Predecessors	Successors	er	1st Quarter Dec   Jan   Feb   Mar	2nd Quarter Apr   May   Jun	3rd Quarter Jul   Aug   Sep	4th Quarter Oct   Nov   Dec	1st Quarter Jan   Feb   Mar	2nd Quarter Apr   May   Jun	3rd Quarter Jul   Aug   Sep	4th Quarter Oct   Nov   Dec	1st Quarter Jan   Feb   Mar	2nd Quarter Apr   May
0	0		<b>SOW Section City of Salinas - RMS/WebUI &amp; Interfaces DRAFT</b>	<b>429 days</b>	<b>ton 1/4/16</b>	<b>Tue 9/5/17</b>													
1	1		<b>Phase I - Initiation</b>	<b>40 days</b>	<b>ton 5/2/16</b>	<b>Tue 6/28/16</b>		247SS,248SS,249											
2	1.1		Pre Contract Milestones and Deliverables	20 days	Mon 5/2/16	Fri 5/27/16		8,4,3											
3	1.2		Finalize SOW	10 days	Tue 5/31/16	Mon 6/13/16	2	5,8,10,4FF,7											
4	1.3		Finalize Contract	5 days	Tue 6/7/16	Mon 6/13/16	2,3FF	6,8,5,10,7											
5	1.4		Draft Project Schedule	5 days	Tue 6/14/16	Mon 6/20/16	4,3												
6	1.5		Perform TriTech Internal Initiation activities	5 days	Tue 6/14/16	Mon 6/20/16	4	8											
7	1.6		Contract signed	0 days	Tue 6/28/16	Tue 6/28/16	3,4	11FS+8 days											
8	1.7		Phase I (Initiation) Complete	0 days	ton 6/20/16	Mon 6/20/16	2,4,6,3	10											
9	2		<b>Phase II - Planning</b>	<b>28 days</b>	<b>ue 6/21/16</b>	<b>Fri 7/29/16</b>													
10	2.1	6.1	Develop Project Management Plans (Communications Mgmt, Risk Mgmt, Change Mgmt)	5 days	Tue 6/22/16	Mon 6/27/16	3,4,8	11,13											
11	2.2	6.1.2	Conduct a Project Kick-off	1 day	ton 7/11/16	Mon 7/11/16	10,7FS+8 days	12FS+4 days,13,1											
12	2.3	6.1	Baseline Project Schedule	10 days	ton 7/18/16	Fri 7/29/16	11FS+4 days	13											
13	2.4		Phase II (Planning) Complete	0 days	Fri 7/29/16	Fri 7/29/16	10,11,12												
14	3		<b>Phase III - Execution</b>	<b>429 days</b>	<b>Mon 1/4/16</b>	<b>Tue 9/5/17</b>													
15	3.1		<b>Hardware/OS Configuration</b>	<b>75 days</b>	<b>ue 7/12/16</b>	<b>Tue 10/25/16</b>													
16	3.1.1	7.2.1	HDW - Review: Site Prep/Network Diagram Review	5 days	Tue 7/12/16	Mon 7/18/16	11	23,17											
17	3.1.2	7.2.2	HDW - Procure and deliver Hardware and third party Software	25 days	Tue 7/19/16	Mon 8/22/16	16	18FS+5 days											
18	3.1.3	7.2.4	HDW - Complete ISR Configuration Sheet	5 days	Tue 8/30/16	Tue 9/6/16	17FS+5 days	19											
19	3.1.4	7.2.4	HDW - Base HDW/OS installation	10 days	Wed 9/7/16	Tue 9/20/16	18	23,20											
20	3.1.5	7.2.7	HDW - System Installation and Server Configuration	15 days	Tue 9/21/16	Tue 10/11/16	19	23,22,21,228,32,4											
21	3.1.6	7.2.7	HDW - Conduct Technical Handoff Meeting with Client	1 day	Wed 10/12/16	Wed 10/12/16	20	23											
22	3.1.7	7.2.7	HDW - Disaster Recovery System Installation and Configuration	10 days	Wed 10/12/16	Tue 10/25/16	20	23											
23	3.1.8		HDW - Complete	0 days	Tue 10/25/16	Tue 10/25/16	16,19,20,22,21												
24	3.2		<b>GIS</b>	<b>106 days</b>	<b>ue 7/12/16</b>	<b>Fri 12/9/16</b>													
25	3.2.1	7.3.4	GIS - Client Source Data Submission	1 day	Tue 7/12/16	Tue 7/12/16	11	26FS+5 days											
26	3.2.2	7.3.4	GIS - Source Data Evaluation for RMS	10 days	Tue 7/20/16	Tue 8/2/16	25FS+5 days	35,27											
27	3.2.3	7.3.4	GIS - Complete GIS Analysis Report	5 days	Wed 8/3/16	Tue 8/9/16	26	28											
28	3.2.4	7.3.4	GIS - Client Modification Based on TriTech Feedback (Iterative)	10 days	Tue 8/10/16	Tue 8/23/16	27	29											
29	3.2.5	7.3.4	GIS - Client final Data submission	3 days	Tue 8/24/16	Fri 8/26/16	28	30											
30	3.2.6	7.3.4	GIS - Create RMS GIS Locator Packages	10 days	Mon 8/29/16	Mon 9/12/16	29	32,31											



Project: City of Salinas - RMS/WebUI  
Date: Fri 6/3/16

Task	Project Summary	Inactive Milestone	Manual Summary Rollup	Deadline
Split	External Tasks	Inactive Summary	Manual Summary	Progress
Milestone	External Milestone	Manual Task	Start-only	Manual Progress
Summary	Inactive Task	Duration-only	Finish-only	

Page 1

ID	WBS	Notes	Task Name	Duration	Start	Finish	Predecessors	Successors	1st Quarter	2nd Quarter	3rd Quarter	4th Quarter	1st Quarter	2nd Quarter	3rd Quarter	4th Quarter	1st Quarter	2nd Quarter																		
									Dec	Jan	Feb	Mar	Apr	May	Jun	Jul	Aug	Sep	Oct	Nov	Dec	Jan	Feb	Mar	Apr	May										
31	3.2.7	7.3.4	GIS - GIS Link Installation	2 days	Tue 9/13/16	Wed 9/14/16 30	15,34																													
32	3.2.8	7.3.4	GIS - Configure RMS Web Services for GIS	2 days	sd 10/12/16	Thu 10/13/16 20,30	33																													
33	3.2.9	7.3.4	GIS - Install RMS GIS Framework	1 day	ri 10/14/16	Fri 10/14/16 32																														
34	3.2.10	7.3.4	GIS - Client Updates	60 days	Fhu 9/15/16	Fri 12/9/16 31	35																													
35	3.2.11	7.3.4	GIS - Complete	0 days	Fri 12/9/16	Fri 12/9/16 26,31,34																														
36	3.3		Inform RMS/WebUI	243 days	ue 7/12/16	Wed 6/21/17																														
37	3.3.1		Inform RMS/WebUI Implementation	243 days	ue 7/12/16	Wed 6/21/17																														
38	3.3.1.1	7.3.1	RMS/WebUI - System Orientation	4 days	Tue 7/12/16	Fri 7/15/16 11	217,39FS+15 days																													
39	3.3.1.2	7.3.2	RMS/WebUI - Remote SMS Worksession	2 hrs	Mon 8/8/16	Mon 8/8/16 38FS+15 days	41																													
40	3.3.1.3	7.3.2	RMS/WebUI - Client to complete SMS Worksheet	10 days	ion 7/18/16	Fri 7/29/16 38																														
41	3.3.1.4	7.3.2	RMS/WebUI - Base Code File Entry	2 wks	Mon 8/8/16	Mon 8/22/16 38,39	42																													
42	3.3.1.5	7.3.3	RMS/WebUI - Administration Review and Training	3 days	sd 10/12/16	Fri 10/14/16 38FS+15 days,20,43FS+15 days,44,																														
43	3.3.1.6	7.3.6	RMS/WebUI - Workshop #1 - Data Entry Designer (Template) Workshop	3 days	Mon 11/7/16	Wed 11/9/16 42FS+15 days	14FS+20 days,47SF																													
44	3.3.1.7	7.3.5	RMS/WebUI - DOLF	3 days	on 12/12/16	Wed 12/14/16 42,43FS+20 days	47SF,67FS+11 day																													
45	3.3.1.8	7.3.6	RMS/WebUI - Workshop #2 - Module Configuration Worksho	3 days	Fhu 1/12/17	Mon 1/16/17 44FS+20 days	47SF,66,67,46FS+																													
46	3.3.1.9	7.3.6	RMS/WebUI - Workshop #3 - Output Designer	3 days	Tue 2/14/17	Thu 2/16/17 45FS+20 days	47SF,66,67																													
47	3.3.1.10	7.3.5	RMS/WebUI - System Code File Building by Client	12 wks	ri 11/18/16	Tue 2/14/17 44SF,42SF,43SF,A	66,67																													
48	3.3.1.11		Custom RMS Modification Accident Sketchs	131 days	Tue 8/9/16	Fri 2/10/17																														
49	3.3.1.11.1	2.1.1.1	Requirement Analysis	5 days	Tue 8/9/16	Mon 8/15/16 11FS+20 days	50,120,144,132,1																													
50	3.3.1.11.2	2.1.1.1	OSD Development	20 days	Tue 8/16/16	Tue 9/13/16 49	51																													
51	3.3.1.11.3	2.1.1.1	OSD Review and Revision	10 days	ed 9/14/16	Tue 9/27/16 50	52																													
52	3.3.1.11.4	2.1.1.1	OSD Approval	1 day	ed 9/28/16	Wed 9/28/16 51	53																													
53	3.3.1.11.5	2.1.1.1	Modification Coding	12 wks	Fhu 9/29/16	Fri 12/23/16 52	54																													
54	3.3.1.11.6	2.1.1.1	Initial Testing	5 days	on 12/26/16	Fri 12/30/16 53	55																													
55	3.3.1.11.7	2.1.1.1	Troubleshooting and Rework	30 days	Mon 1/2/17	Fri 2/10/17 54	56																													
56	3.3.1.11.8		RMS - Modification Ready	0 days	Fri 2/10/17	Fri 2/10/17 55	82,215,67																													
57	3.3.1.12		Custom RMS Modification NIST Compliant Mugshots	131 days	Tue 8/9/16	Fri 2/10/17																														
58	3.3.1.12.1	2.1.1.1	Requirement Analysis	5 days	Tue 8/9/16	Mon 8/15/16 11FS+20 days	56,120,144,132,1																													
59	3.3.1.12.2	2.1.1.1	OSD Development	20 days	Tue 8/16/16	Tue 9/13/16 58	60																													
60	3.3.1.12.3	2.1.1.1	OSD Review and Revision	10 days	ed 9/14/16	Tue 9/27/16 59	61																													
61	3.3.1.12.4	2.1.1.1	OSD Approval	1 day	ed 9/28/16	Wed 9/28/16 60	62																													
62	3.3.1.12.5	2.1.1.1	Modificaiton Coding	12 wks	Fhu 9/29/16	Fri 12/23/16 61	63																													

Project: City of Salinas - RMS/Web  
Date: Fri 6/3/16

Task: Project Summary, External Tasks, External Milestone, Inactive Task  
 Inactive Milestone, Manual Summary Rollup, Manual Summary, Manual Task, Duration-only  
 Deadline, Progress, Manual Progress

Page 2

ID	WBS	Notes	Task Name	Duration	Start	Finish	Predecessors	Successors	Quarter																		
									1st Quarter	2nd Quarter	3rd Quarter	4th Quarter	1st Quarter	2nd Quarter	3rd Quarter	4th Quarter	1st Quarter	2nd Quarter									
									Dec	Jan	Feb	Mar	Apr	May	Jun	Jul	Aug	Sep	Oct	Nov	Dec	Jan	Feb	Mar	Apr	May	
63	3.3.1.12.6	2.1.1.1	Initial Testing	5 days	12/26/16	Fri 12/30/16	62	64																			
64	3.3.1.12.7	2.1.1.1	Troubleshooting and Rework	30 days	Mon 1/2/17	Fri 2/10/17	63	65																			
65	3.3.1.12.8		RMS - Modification Ready	0 days	Fri 2/10/17	Fri 2/10/17	64	82,215,67																			
66	3.3.1.13	7.3.7	RMS - Testing (FAT- Prep)	5 days	Fri 2/17/17	Thu 2/23/17	44,45,47,46	67																			
67	3.3.1.14	7.3.7	RMS - Testing (FAT- Execute at Client Site)	2 days	Fri 2/24/17	Mon 2/27/17	66,44FS+11 days,45,47,46,56,	68																			
68	3.3.1.15		RMS/WebUI - System Integration Ready	0 days	Mon 2/27/17	Mon 2/27/17	67	70FS+20 days,23F																			
69	3.3.1.16		RMS/WebUI - User Training	61 days	Tue 3/28/17	Wed 6/21/17																					
70	3.3.1.16.1	7.3.9.4	RMS/WebUI User Training - Field Officers	3 days	Tue 3/28/17	Thu 3/30/17	68FS+20 days	78,71FS+2 days																			
71	3.3.1.16.2	7.3.9.4	RMS/WebUI User Training - Field Officers	3 days	Tue 4/4/17	Thu 4/6/17	70FS+2 days	78,72FS+2 days																			
72	3.3.1.16.3	7.3.9.4	RMS/WebUI User Training - Field Officers	3 days	Tue 4/11/17	Thu 4/13/17	71FS+2 days	78,73FS+2 days																			
73	3.3.1.16.4	7.3.9.4	RMS/WebUI User Training - Field Officers	3 days	Tue 4/18/17	Thu 4/20/17	72FS+2 days	78,74FS+2 days																			
74	3.3.1.16.5	7.3.9.4	RMS/WebUI User Training - Field Officers	3 days	Tue 4/25/17	Thu 4/27/17	73FS+2 days	78,75FS+2 days																			
75	3.3.1.16.6	7.3.9.4	RMS/WebUI User Training - Field Officers	3 days	Tue 5/2/17	Thu 5/4/17	74FS+2 days	78,76FS+2 days																			
76	3.3.1.16.7	7.3.9.4	RMS/WebUI User Training - Field Officers	3 days	Tue 5/9/17	Thu 5/11/17	75FS+2 days	78,77FS+2 days																			
77	3.3.1.16.8	7.3.9.4	RMS/WebUI User Training - Field Officers	3 days	Tue 5/16/17	Thu 5/18/17	76FS+2 days	78																			
78	3.3.1.16.9	7.3.9.3	RMS/WebUI User Training - Records	3 days	Fri 5/19/17	Tue 5/23/17	70,71,72,77,76,71	79FS+2 days																			
79	3.3.1.16.10	7.3.9.6	RMS/WebUI User Training - Investigations	3 days	Fri 5/26/17	Wed 5/31/17	78FS+2 days	82,80FS+2 days,8																			
80	3.3.1.16.11	7.3.9.6	RMS/WebUI User Training - Investigations	3 days	Mon 6/5/17	Wed 6/7/17	79FS+2 days	82																			
81	3.3.1.16.12	7.3.9.6	RMS/WebUI User Training - investigations	3 days	Mon 6/5/17	Wed 6/7/17	79FS+2 days	82																			
82	3.3.1.16.13	7.3.9.5	RMS/WebUI User Training - Property/Evidence	3 days	Thu 6/8/17	Mon 6/12/17	81,106,80,79,118	83																			
83	3.3.1.16.14	7.3.9.7	RMS/WebUI User Training - Human Resources & Training	3 days	Tue 6/13/17	Thu 6/15/17	82	84																			
84	3.3.1.16.15	7.3.9.8	RMS/WebUI User Training - Report Writing	3 days	Fri 6/16/17	Tue 6/20/17	83	86,85																			
85	3.3.1.16.16	7.3.9.10	TIPS User Training	1 day	Wed 6/21/17	Wed 6/21/17	84																				
86	3.3.1.16.17		RMS/WebUI User Training Complete	0 days	Tue 6/20/17	Tue 6/20/17	84	242																			
87	3.3.2		Inform RMS Interfaces	121 days	Tue 8/9/16	Fri 1/27/17																					
88	3.3.2.1		Standard RMS Interfaces	12 days	Fri 9/28/16	Thu 10/13/16																					
89	3.3.2.1.1		RMS/WebUI - Enhanced NCIC Query Interface	12 days	Fri 9/28/16	Thu 10/13/16																					
90	3.3.2.1.1.1	7.6.1	RMS/WebUI - NCIC - Data Collection (ORI, Mneumonics, Machine Names)	10 days	Wed 9/28/16	Wed 10/12/16	91SF																				
91	3.3.2.1.1.2	7.6.1	RMS/WebUI - NCIC - Installation - Configuration	1 day	Wed 10/12/16	Wed 10/12/16	20	92,90SF																			
92	3.3.2.1.1.3	7.6.1	RMS/WebUI - NCIC - Administrator Training	1 day	Thu 10/13/16	Thu 10/13/16	91	93																			
93	3.3.2.1.1.4		RMS/WebUI - NCIC RMS Interface Ready	0 days	Thu 10/13/16	Thu 10/13/16	92	215																			

Project: City of Salinas - RMS/Web  
Date: Fri 6/3/16

Task		Project Summary		Inactive Milestone		Manual Summary Rollup		Deadline
Split		External Tasks		Inactive Summary		Manual Summary		Progress
Milestone		External Milestone		Manual Task		Start-only		Manual Progress
Summary		Inactive Task		Duration-only		Finish-only		

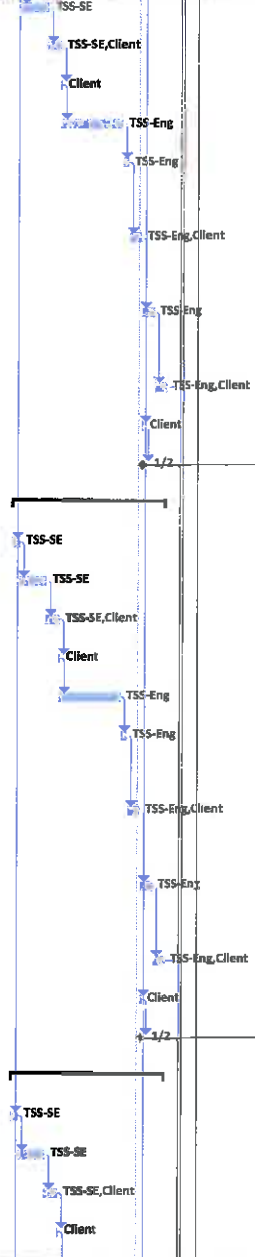
Page 3

ID	WBS	Notes	Task Name	Duration	Start	Finish	Predecessors	Summary	1st Quarter		2nd Quarter		3rd Quarter		4th Quarter		1st Quarter		2nd Quarter		3rd Quarter		4th Quarter		1st Quarter		2nd Quarter		
									Jan	Feb	Mar	Apr	May	Jun	Jul	Aug	Sep	Oct	Nov	Dec	Jan	Feb	Mar	Apr	May	Jun	Jul	Aug	Sep
94	3.3.2.2		Custom RMS Interfaces	121 days	Tue 8/9/16	Fri 1/27/17																							
95	3.3.2.2.1		RMS - Live Scan Fingerprint Interface	102 days	Tue 8/9/16	Mon 1/2/17																							
96	3.3.2.2.1.1	7.6.2	Requirement Analysis	5 days	Tue 8/9/16	Mon 8/15/16	11FS+20 days	97,120,144,112,1																					
97	3.3.2.2.1.2	7.6.2	OSD Development	20 days	Tue 8/16/16	Tue 9/13/16	96	98																					
98	3.3.2.2.1.3	7.6.2	OSD Review and Revision	10 days	Tue 9/14/16	Tue 9/27/16	97	99																					
99	3.3.2.2.1.4	7.6.2	OSD Approval	1 day	Tue 9/28/16	Wed 9/28/16	98	100																					
100	3.3.2.2.1.5	7.6.2	Interface Coding	6 wks	Thu 9/29/16	Wed 11/9/16	99	101																					
101	3.3.2.2.1.6	7.6.2	Interface Installation and Initial Testing	5 days	Thu 11/10/16	Wed 11/16/16	100	102																					
102	3.3.2.2.1.7	7.6.2	Interface testing with Vendor and Client	10 days	Thu 11/17/16	Fri 12/2/16	101	103																					
103	3.3.2.2.1.8	7.6.2	Interface Troubleshooting and Rework	10 days	Mon 12/5/16	Fri 12/16/16	102	104																					
104	3.3.2.2.1.9	7.6.2	Interface FAT	10 days	Mon 12/19/16	Fri 12/30/16	103	215,105,117,129,																					
105	3.3.2.2.1.10	7.6.2	Administrator Training	1 day	Mon 1/2/17	Mon 1/2/17	104	106																					
106	3.3.2.2.1.11		RMS - Interface Ready	0 days	Mon 1/2/17	Mon 1/2/17	105	82,215																					
107	3.3.2.2.2		Custom RMS Interface AFIS	102 days	Tue 8/9/16	Mon 1/2/17																							
108	3.3.2.2.2.1	7.6.2	Requirement Analysis	5 days	Tue 8/9/16	Mon 8/15/16	11FS+20 days	109,120,144,132,																					
109	3.3.2.2.2.2	7.6.2	OSD Development	20 days	Tue 8/16/16	Tue 9/13/16	108	110																					
110	3.3.2.2.2.3	7.6.2	OSD Review and Revision	10 days	Tue 9/14/16	Tue 9/27/16	109	111																					
111	3.3.2.2.2.4	7.6.2	OSD Approval	1 day	Tue 9/28/16	Wed 9/28/16	110	112																					
112	3.3.2.2.2.5	7.6.2	Interface Coding	6 wks	Thu 9/29/16	Wed 11/9/16	111	113																					
113	3.3.2.2.2.6	7.6.2	Interface Installation and Initial Testing	5 days	Thu 11/10/16	Wed 11/16/16	112	114																					
114	3.3.2.2.2.7	7.6.2	Interface testing with Vendor and Client	10 days	Thu 11/17/16	Fri 12/2/16	113	115																					
115	3.3.2.2.2.8	7.6.2	Interface Troubleshooting and Rework	10 days	Mon 12/5/16	Fri 12/16/16	114	116																					
116	3.3.2.2.2.9	7.6.2	Interface FAT	10 days	Mon 12/19/16	Fri 12/30/16	115	215																					
117	3.3.2.2.2.10	7.6.2	Administrator Training	1 day	Mon 1/2/17	Mon 1/2/17	104	118																					
118	3.3.2.2.2.11		RMS - Interface Ready	0 days	Mon 1/2/17	Mon 1/2/17	117	82,215																					
119	3.3.2.2.3		Custom RMS Interface CrimeView	116 days	Tue 8/16/16	Fri 1/27/17																							
120	3.3.2.2.3.1	7.6.2	Requirement Analysis	5 days	Tue 8/16/16	Mon 8/22/16	108,96,58,49	121																					

Project: City of Salinas - RMS/Web  
Date: Fri 6/3/16

Task		Project Summary		Inactive Milestone		Manual Summary Rollup		Deadline
Split		External Tasks		Inactive Summary		Manual Summary		Progress
Milestone		External Milestone		Manual Task		Start-only		Manual Progress
Summary		Inactive Task		Duration-only		Finish-only		

ID	WBS	Notes	Task Name	Duration	Start	Finish	Predecessors	Successors	1st Quarter	2nd Quarter	3rd Quarter	4th Quarter	1st Quarter	2nd Quarter	3rd Quarter	4th Quarter	1st Quarter	2nd Quarter	
									Dec	Jan	Feb	Mar	Apr	May	Jun	Jul	Aug	Sep	Oct
121	3.3.2.2.3.2	7.6.2	OSD Development	20 days	Tue 8/23/16	Tue 9/20/16	120	121											
122	3.3.2.2.3.3	7.6.2	OSD Review and Revision	10 days	Tue 9/21/16	Tue 10/4/16	121	123											
123	3.3.2.2.3.4	7.6.2	OSD Approval	1 day	Wed 10/5/16	Wed 10/5/16	122	124											
124	3.3.2.2.3.5	7.6.2	Interface Coding	45 days	Fri 10/6/16	Fri 12/9/16	123	125											
125	3.3.2.2.3.6	7.6.2	Interface Installation and Initial Testing	5 days	Mon 12/12/16	Fri 12/16/16	124	126											
126	3.3.2.2.3.7	7.6.2	Interface testing with Vendor and Client	10 days	Mon 12/19/16	Fri 12/30/16	125	127											
127	3.3.2.2.3.8	7.6.2	Interface Troubleshooting and Rework	10 days	Mon 1/2/17	Fri 1/13/17	126	128											
128	3.3.2.2.3.9	7.6.2	Interface FAT	10 days	Tue 1/16/17	Fri 1/27/17	127	215											
129	3.3.2.2.3.10	7.6.2	Administrator Training	1 day	Mon 1/2/17	Mon 1/2/17	104	130											
130	3.3.2.2.3.11		RMS - Interface Ready	0 days	Mon 1/2/17	Mon 1/2/17	129	82,215											
131	3.3.2.2.4		Custom RMS Interface Medallion	116 days	Tue 8/16/16	Fri 1/27/17													
132	3.3.2.2.4.1	7.6.2	Requirement Analysis	5 days	Tue 8/16/16	Mon 8/22/16	108,96,58,49	133											
133	3.3.2.2.4.2	7.6.2	OSD Development	20 days	Tue 8/23/16	Tue 9/20/16	132	134											
134	3.3.2.2.4.3	7.6.2	OSD Review and Revision	10 days	Tue 9/21/16	Tue 10/4/16	133	135											
135	3.3.2.2.4.4	7.6.2	OSD Approval	1 day	Wed 10/5/16	Wed 10/5/16	134	136											
136	3.3.2.2.4.5	7.6.2	Interface Coding	45 days	Fri 10/6/16	Fri 12/9/16	135	137											
137	3.3.2.2.4.6	7.6.2	Interface Installation and Initial Testing	5 days	Mon 12/12/16	Fri 12/16/16	136	138											
138	3.3.2.2.4.7	7.6.2	Interface testing with Vendor and Client	10 days	Mon 12/19/16	Fri 12/30/16	137	139											
139	3.3.2.2.4.8	7.6.2	Interface Troubleshooting and Rework	10 days	Mon 1/2/17	Fri 1/13/17	138	140											
140	3.3.2.2.4.9	7.6.2	Interface FAT	10 days	Tue 1/16/17	Fri 1/27/17	139	215											
141	3.3.2.2.4.10	7.6.2	Administrator Training	1 day	Mon 1/2/17	Mon 1/2/17	104	142											
142	3.3.2.2.4.11		RMS - Interface Ready	0 days	Mon 1/2/17	Mon 1/2/17	141	82,215											
143	3.3.2.2.5		Custom RMS Interface CopLink	116 days	Tue 8/16/16	Fri 1/27/17													
144	3.3.2.2.5.1	7.6.2	Requirement Analysis	5 days	Tue 8/16/16	Mon 8/22/16	108,96,58,49	145											
145	3.3.2.2.5.2	7.6.2	OSD Development	20 days	Tue 8/23/16	Tue 9/20/16	144	146											
146	3.3.2.2.5.3	7.6.2	OSD Review and Revision	10 days	Tue 9/21/16	Tue 10/4/16	145	147											
147	3.3.2.2.5.4	7.6.2	OSD Approval	1 day	Wed 10/5/16	Wed 10/5/16	146	148											



Project: City of Salinas - RMS/Web  
Date: Fri 6/3/16

Task	<span style="display:inline-block; width:15px; height:10px; background-color:blue;"></span> Project Summary	<span style="display:inline-block; width:15px; height:10px; background-color:grey;"></span> Inactive Milestone	<span style="display:inline-block; width:15px; height:10px; background-color:lightgrey;"></span> Manual Summary Rollup	<span style="display:inline-block; width:15px; height:10px; background-color:green;"></span> Deadline
Split	<span style="display:inline-block; width:15px; border-bottom:1px dotted black;"></span> External Tasks	<span style="display:inline-block; width:15px; height:10px; background-color:grey;"></span> Inactive Summary	<span style="display:inline-block; width:15px; border-bottom:1px dashed grey;"></span> Manual Summary	<span style="display:inline-block; width:15px; height:10px; background-color:green;"></span> Progress
Milestone	<span style="display:inline-block; width:15px; height:10px; background-color:grey;"></span> External Milestone	<span style="display:inline-block; width:15px; height:10px; background-color:grey;"></span> Manual Task	<span style="display:inline-block; width:15px; height:10px; background-color:lightgrey;"></span> Start-only	<span style="display:inline-block; width:15px; height:10px; background-color:green;"></span> Manual Progress
Summary	<span style="display:inline-block; width:15px; border-top:1px solid grey;"></span> Inactive Task	<span style="display:inline-block; width:15px; height:10px; background-color:blue;"></span> Duration-only	<span style="display:inline-block; width:15px; height:10px; background-color:lightgrey;"></span> Finish-only	<span style="display:inline-block; width:15px; height:10px; background-color:green;"></span>

ID	WBS	Notes	Task Name	Duration	Start	Finish	Predecessors	Successors	1st Quarter	2nd Quarter	3rd Quarter	4th Quarter	1st Quarter	2nd Quarter	3rd Quarter	4th Quarter	1st Quarter	2nd Quarter									
									Dec	Jan	Feb	Mar	Apr	May	Jun	Jul	Aug	Sep	Oct	Nov	Dec	Jan	Feb	Mar	Apr	May	
148	3.3.2.2.5.5	7.6.2	Interface Coding	45 days	Thu 10/6/16	Fri 12/9/16	147	149																			
149	3.3.2.2.5.6	7.6.2	Interface Installation and Initial Testing	5 days	Mon 12/12/16	Fri 12/16/16	148	150																			
150	3.3.2.2.5.7	7.6.2	Interface testing with Vendor and Client	10 days	Mon 12/19/16	Fri 12/30/16	149	151																			
151	3.3.2.2.5.8	7.6.2	Interface Troubleshooting and Rework	10 days	Mon 1/2/17	Fri 1/13/17	150	152																			
152	3.3.2.2.5.9	7.6.2	Interface FAT	10 days	Ton 1/16/17	Fri 1/27/17	151	215																			
153	3.3.2.2.5.10	7.6.2	Administrator Training	1 day	Mon 1/2/17	Mon 1/2/17	104	154																			
154	3.3.2.2.5.11		RMS - Interface Ready	0 days	Mon 1/2/17	Mon 1/2/17	153	82,215																			
155	3.3.2.2.6		Custom RMS Interface CARFAX	116 days	Tue 8/16/16	Fri 1/27/17																					
156	3.3.2.2.6.1	7.6.2	Requirement Analysis	5 days	Tue 8/16/16	Mon 8/22/16	108,96,58,49	157																			
157	3.3.2.2.6.2	7.6.2	OSD Development	20 days	Tue 8/23/16	Tue 9/20/16	156	158																			
158	3.3.2.2.6.3	7.6.2	OSD Review and Revision	10 days	Tue 9/21/16	Tue 10/4/16	157	159																			
159	3.3.2.2.6.4	7.6.2	OSD Approval	1 day	Tue 10/5/16	Wed 10/5/16	158	160																			
160	3.3.2.2.6.5	7.6.2	Interface Coding	45 days	Thu 10/6/16	Fri 12/9/16	159	161																			
161	3.3.2.2.6.6	7.6.2	Interface Installation and Initial Testing	5 days	Mon 12/12/16	Fri 12/16/16	160	162																			
162	3.3.2.2.6.7	7.6.2	Interface testing with Vendor and Client	10 days	Mon 12/19/16	Fri 12/30/16	161	163																			
163	3.3.2.2.6.8	7.6.2	Interface Troubleshooting and Rework	10 days	Mon 1/2/17	Fri 1/13/17	162	164																			
164	3.3.2.2.6.9	7.6.2	Interface FAT	10 days	Ton 1/16/17	Fri 1/27/17	163	215																			
165	3.3.2.2.6.10	7.6.2	Administrator Training	1 day	Mon 1/2/17	Mon 1/2/17	104	166																			
166	3.3.2.2.6.11		RMS - Interface Ready	0 days	Mon 1/2/17	Mon 1/2/17	165	92,215																			
167	3.3.2.2.7		Custom RMS Interface Court Name Query	116 days	Tue 8/16/16	Fri 1/27/17																					
168	3.3.2.2.7.1	7.6.2	Requirement Analysis	5 days	Tue 8/16/16	Mon 8/22/16	108,96,58,49	169																			
169	3.3.2.2.7.2	7.6.2	OSD Development	20 days	Tue 8/23/16	Tue 9/20/16	168	170																			
170	3.3.2.2.7.3	7.6.2	OSD Review and Revision	10 days	Tue 9/21/16	Tue 10/4/16	169	171																			
171	3.3.2.2.7.4	7.6.2	OSD Approval	1 day	Tue 10/5/16	Wed 10/5/16	170	172																			
172	3.3.2.2.7.5	7.6.2	Interface Coding	45 days	Thu 10/6/16	Fri 12/9/16	171	173																			
173	3.3.2.2.7.6	7.6.2	Interface Installation and Initial Testing	5 days	Mon 12/12/16	Fri 12/16/16	172	174																			

Project: City of Sallinas - RKIS/Web  
Date: Fri 6/3/16

Task	Project Summary	Inactive Milestone	Manual Summary Rollup	Deadline
Split	External Tasks	Inactive Summary	Manual Summary	Progress
Milestone	External Milestone	Manual Task	Start-only	Manual Progress
Summary	Inactive Task	Duration-only	Finish-only	

Page 6

ID	WBS	Notes	Task Name	Duration	Start	Finish	Predecessors	SUCCESSORS	Quarter												
									1st	2nd	3rd	4th	1st	2nd	3rd	4th	1st	2nd			
									Dec	Jan	Feb	Mar	Apr	May	Jun	Jul	Aug	Sep	Oct	Nov	Dec
174	3.3.2.2.7.7	7.6.2	Interface testing with Vendor and Client	10 days	Mon 12/19/16	Fri 12/30/16	173	175													
175	3.3.2.2.7.8	7.6.2	Interface Troubleshooting and Rework	10 days	Mon 1/2/17	Fri 1/13/17	174	176													
176	3.3.2.2.7.9	7.6.2	Interface FAT	10 days	Mon 1/16/17	Fri 1/27/17	175	215													
177	3.3.2.2.7.10	7.6.2	Administrator Training	1 day	Mon 1/2/17	Mon 1/2/17	104	178													
178	3.3.2.2.7.11		RMS - Interface Ready	0 days	Mon 1/2/17	Mon 1/2/17	177	82,215													
179	3.3.2.2.8		Custom RMS Interface Probable Cause to Court	116 days	Tue 8/16/16	Fri 1/27/17															
180	3.3.2.2.8.1	7.6.2	Requirement Analysis	5 days	Tue 8/16/16	Mon 8/22/16	108,96,58,49	181													
181	3.3.2.2.8.2	7.6.2	OSD Development	20 days	Tue 8/23/16	Tue 9/20/16	180	182													
182	3.3.2.2.8.3	7.6.2	OSD Review and Revision	10 days	Tue 9/21/16	Tue 10/4/16	181	183													
183	3.3.2.2.8.4	7.6.2	OSD Approval	1 day	Tue 10/5/16	Wed 10/5/16	182	184													
184	3.3.2.2.8.5	7.6.2	Interface Coding	45 days	Fri 10/6/16	Fri 12/9/16	183	185													
185	3.3.2.2.8.6	7.6.2	Interface Installation and Initial Testing	5 days	Mon 12/12/16	Fri 12/16/16	184	186													
186	3.3.2.2.8.7	7.6.2	Interface testing with Vendor and Client	10 days	Mon 12/19/16	Fri 12/30/16	185	187													
187	3.3.2.2.8.8	7.6.2	Interface Troubleshooting and Rework	10 days	Mon 1/2/17	Fri 1/13/17	186	188													
188	3.3.2.2.8.9	7.6.2	Interface FAT	10 days	Mon 1/16/17	Fri 1/27/17	187	215													
189	3.3.2.2.8.10	7.6.2	Administrator Training	1 day	Mon 1/2/17	Mon 1/2/17	104	190													
190	3.3.2.2.8.11		RMS - Interface Ready	0 days	Mon 1/2/17	Mon 1/2/17	189	32,215													
191	3.3.2.2.9		Custom RMS Interface CryWolf	116 days	Tue 8/16/16	Fri 1/27/17															
192	3.3.2.2.9.1	7.6.2	Requirement Analysis	5 days	Tue 8/16/16	Mon 8/22/16	108,96,58,49	193													
193	3.3.2.2.9.2	7.6.2	OSD Development	20 days	Tue 8/23/16	Tue 9/20/16	192	194													
194	3.3.2.2.9.3	7.6.2	OSD Review and Revision	10 days	Tue 9/21/16	Tue 10/4/16	193	195													
195	3.3.2.2.9.4	7.6.2	OSD Approval	1 day	Tue 10/5/16	Wed 10/5/16	194	196													
196	3.3.2.2.9.5	7.6.2	Interface Coding	45 days	Fri 10/6/16	Fri 12/9/16	195	197													
197	3.3.2.2.9.6	7.6.2	Interface Installation and Initial Testing	5 days	Mon 12/12/16	Fri 12/16/16	196	198													
198	3.3.2.2.9.7	7.6.2	Interface testing with Vendor and Client	10 days	Mon 12/19/16	Fri 12/30/16	197	199													

Project: City of Salinas - RMS/Web  
Date: Fri 6/3/16

Project Summary	Inactive Milestone	Manual Summary Rollup	Deadline
Split	External Tasks	Manual Summary	Progress
Milestone	External Milestone	Start-only	Manual Progress
Summary	Inactive Task	Duration-only	Finish-only

Page 7



ID	WBS	Notes	Task Name	Duration	Start	Finish	Predecessors	Successors	Quarter																																							
									1st Quarter			2nd Quarter			3rd Quarter			4th Quarter																														
Dec	Jan	Feb	Mar	Apr	May	Jun	Jul	Aug	Sep	Oct	Nov	Dec	Jan	Feb	Mar	Apr	May	Jun	Jul	Aug	Sep	Oct	Nov	Dec	Jan	Feb	Mar	Apr	May	Jun	Jul	Aug	Sep	Oct	Nov	Dec	Jan	Feb	Mar	Apr	May	Jun	Jul	Aug	Sep	Oct	Nov	Dec
199	3.3.2.2.9.8	7.6.2	Interface Troubleshooting and Rework	10 days	Mon 1/2/17	Fri 1/13/17	198	200	[Gantt Chart Data for 199]																																							
200	3.3.2.2.9.9	7.6.2	Interface FAT	10 days	Mon 1/16/17	Fri 1/27/17	199	215	[Gantt Chart Data for 200]																																							
201	3.3.2.2.9.10	7.6.2	Administrator Training	1 day	Mon 1/2/17	Mon 1/2/17	104	202	[Gantt Chart Data for 201]																																							
202	3.3.2.2.9.11		RMS - Interface Ready	0 days	Mon 1/2/17	Mon 1/2/17	201	82,215	[Gantt Chart Data for 202]																																							
203	3.3.2.2.10		Custom RMS Interface Parole LEADS Query	116 days	Tue 8/16/16	Fri 1/27/17			[Gantt Chart Data for 203]																																							
204	3.3.2.2.10.1	7.6.2	Requirement Analysis	5 days	Tue 8/16/16	Mon 8/22/16	108,96,58,49	205	[Gantt Chart Data for 204]																																							
205	3.3.2.2.10.2	7.6.2	OSD Development	20 days	Tue 8/23/16	Tue 9/20/16	204	206	[Gantt Chart Data for 205]																																							
206	3.3.2.2.10.3	7.6.2	OSD Review and Revision	10 days	Tue 9/21/16	Tue 10/4/16	205	207	[Gantt Chart Data for 206]																																							
207	3.3.2.2.10.4	7.6.2	OSD Approval	1 day	Wed 10/5/16	Wed 10/5/16	206	208	[Gantt Chart Data for 207]																																							
208	3.3.2.2.10.5	7.6.2	Interface Coding	45 days	Thu 10/6/16	Fri 12/9/16	207	209	[Gantt Chart Data for 208]																																							
209	3.3.2.2.10.6	7.6.2	Interface Installation and initial Testing	5 days	Mon 12/12/16	Fri 12/16/16	208	210	[Gantt Chart Data for 209]																																							
210	3.3.2.2.10.7	7.6.2	Interface testing with Vendor and Client	10 days	Mon 12/19/16	Fri 12/30/16	209	211	[Gantt Chart Data for 210]																																							
211	3.3.2.2.10.8	7.6.2	Interface Troubleshooting and Rework	10 days	Mon 1/2/17	Fri 1/13/17	210	212	[Gantt Chart Data for 211]																																							
212	3.3.2.2.10.9	7.6.2	Interface FAT	10 days	Mon 1/16/17	Fri 1/27/17	211	215	[Gantt Chart Data for 212]																																							
213	3.3.2.2.10.10	7.6.2	Administrator Training	1 day	Mon 1/2/17	Mon 1/2/17	104	214	[Gantt Chart Data for 213]																																							
214	3.3.2.2.10.11		RMS - Interface Ready	0 days	Mon 1/2/17	Mon 1/2/17	213	32,215	[Gantt Chart Data for 214]																																							
215	3.3.3		RMS Interfaces - System Integration Ready	1 day	Mon 2/13/17	Mon 2/13/17	128,116,93,106,1 238,242		[Gantt Chart Data for 215]																																							
216	3.3.4		Law RMS Legacy Data Conversion (LDC)	238 days	Mon 7/18/16	Wed 6/21/17			[Gantt Chart Data for 216]																																							
217	3.3.4.1	7.3.8	LDC RMS - Provide Legacy Data to TriTech	10 days	Mon 7/18/16	Fri 7/29/16	38	218	[Gantt Chart Data for 217]																																							
218	3.3.4.2	7.3.8	LDC RMS - Data Analysis and Review	20 days	Mon 8/1/16	Fri 8/26/16	217	219	[Gantt Chart Data for 218]																																							
219	3.3.4.3	7.3.8	LDC RMS - Define Data Mapping	20 days	Mon 8/29/16	Mon 9/26/16	218	220	[Gantt Chart Data for 219]																																							
220	3.3.4.4	7.3.8	LDC RMS - Develop Data Conversion Plan	40 days	Tue 9/27/16	Mon 11/21/16	219	221	[Gantt Chart Data for 220]																																							
221	3.3.4.5	7.3.8	LDC RMS - Perform Conversion on a sample set	5 days	Tue 11/22/16	Wed 11/30/16	220	222	[Gantt Chart Data for 221]																																							
222	3.3.4.6	7.3.8	LDC RMS - Perform Data Validation	10 days	Thu 12/1/16	Wed 12/14/16	221	223	[Gantt Chart Data for 222]																																							
223	3.3.4.7	7.3.8	LDC RMS - Update Data Conversion Plan and test	20 days	Thu 12/15/16	Wed 1/11/17	222	242	[Gantt Chart Data for 223]																																							
224	3.3.4.8	7.3.8	LDC RMS - Perform Final Legacy RMS Data Conversion	2 days	Mon 6/19/17	Wed 6/21/17	242SF	225	[Gantt Chart Data for 224]																																							
225	3.3.4.9	7.3.8	LDC RMS - Data Conversion Complete	0 days	Wed 6/21/17	Wed 6/21/17	224		[Gantt Chart Data for 225]																																							
226	3.4		TriTech.com IQ & Analytics	46.5 days	Thu 12/29/16	Fri 3/3/17			[Gantt Chart Data for 226]																																							

Project: City of Salinas - RMS/Web  
Date: Fri 6/3/16





ID	WBS	Notes	Task Name	Duration	Start	Finish	Predecessors	Successors	1st Quarter	2nd Qua	3rd Qua	4th Qua	1st	2nd	3rd	4th	1st	2nd	3rd	4th	1st	2nd	3rd	4th		
									Jan	Feb	Mar	Apr	May	Jun	Jul	Aug	Sep	Oct	Nov	Dec	Jan	Feb	Mar	Apr	May	
227	3.4.1		TriTech.com IQ & Analytics Implementation	46.5 days	12/29/16	Fri 3/3/17																				
228	3.4.1.1	7.5	IQ-AN - System checks, synch setup, & conversion services (Remote)	3 wks	Thu 12/29/16	Wed 1/18/17	20,44FS+10 days	229FS+1 wk, 230FS+1 wk																		
229	3.4.1.2	7.5.1	IQ-AN - Administration Training (Remote)	0.5 days	Thu 1/26/17	Thu 1/26/17	228FS+1 wk	231FS+1 wk, 230																		
230	3.4.1.3	7.5.2	IQ-AN - IQ Core End User Training (Remote)	0.5 days	Thu 1/26/17	Thu 1/26/17	228FS+1 wk, 229	231																		
231	3.4.1.4	7.5.3	IQ-AN - Dashboard End User Training (Remote)	1 day	Thu 2/2/17	Fri 2/3/17	230, 229FS+1 wk	233, 232																		
232	3.4.1.5	7.5.4	IQ-AN - Reporting End User Training (Remote)	0.5 days	Fri 2/3/17	Fri 2/3/17	231	236																		
233	3.4.1.6		IQ-AN - Client prepare for rollout to End User Community	2 wks	Fri 2/3/17	Fri 2/17/17	231	234																		
234	3.4.1.7		IQ-AN - Readiness Complete	0 days	Fri 2/17/17	Fri 2/17/17	233	235, 236																		
235	3.4.1.8		IQ-AN - Client Training for Remaining Users	2 wks	Fri 2/17/17	Fri 3/3/17	234	236																		
236	3.4.1.9		IQ-AN - Complete	0 days	Fri 3/3/17	Fri 3/3/17	234, 232, 235	253FS+20 days																		
237	3.5		System Integration Testing	1 day	Tue 2/28/17	Tue 2/28/17																				
238	3.5.1	7.4	RMS/WebUI - System Integration Testing	1 day	Tue 2/28/17	Tue 2/28/17	68, 215																			
239	3.6		Go - Live	389 days	Mon 1/4/16	Mon 7/10/17																				
240	3.6.1	7.7.1	RMS/WebUI - Go Live Assessment/Authorization to Proceed	3 days	Mon 1/4/16	Wed 1/6/16		241																		
241	3.6.2	7.7.1	RMS/WebUI - Pre Go Live System Checks	5 days	Thu 1/7/16	Wed 1/13/16	240	242																		
242	3.6.3	7.7.1	RMS/WebUI - System Lock Down	10 days	Tue 6/21/17	Wed 7/5/17	241, 223, 215, 86	243, 224SF																		
243	3.6.4	7.7.1	RMS/WebUI - Pre Go Live Activities	1 day	Thu 7/6/17	Thu 7/6/17	242	244																		
244	3.6.5	7.7.1	RMS/WebUI - Go Live	2 days	Fri 7/7/17	Mon 7/10/17	243	253FS+20 days, 24																		
245	3.7	7.7.2	Acceptance Test Period	60 days	Tue 7/11/17	Tue 9/5/17	244																			
246	4		Phase IV - Controlling and Monitoring	1 day	Tue 8/8/17	Tue 8/8/17																				
247	4.1	5.1	Control and Monitor Project Activities	1 day	Tue 8/8/17	Tue 8/8/17	155, 254FF																			
248	4.2	5.1	Process TCRs	1 day	Tue 8/8/17	Tue 8/8/17	155, 254FF																			
249	4.3	5.1	Produce Project Reports	1 day	Tue 8/8/17	Tue 8/8/17	155, 254FF																			
250	5		Phase V - Closure	90.5 days	Fri 3/31/17	Tue 8/8/17																				
251	5.1		Hand Off to Support	90.5 days	Fri 3/31/17	Tue 8/8/17		254																		
252	5.1.1	8.1	RMS/WebUI - Hand Off to Support	1 day	Tue 8/8/17	Tue 8/8/17	244FS+20 days																			
253	5.1.2	8.1	IQ-AN - Hand Off to Support	1 day	Fri 3/31/17	Mon 4/3/17	236FS+20 days																			

Project: City of Salinas - RMS/WebUI Date: Fri 6/3/16

Task	Project Summary	Inactive Milestone	Manual Summary Rollup	Deadline
Split	External Task	Inactive Summary	Manual Summary	Progress
Milestone	External Milestone	Manual Task	Start-only	Manual Progress
Summary	Inactive Task	Duration-only	Finish-only	

Page 9

