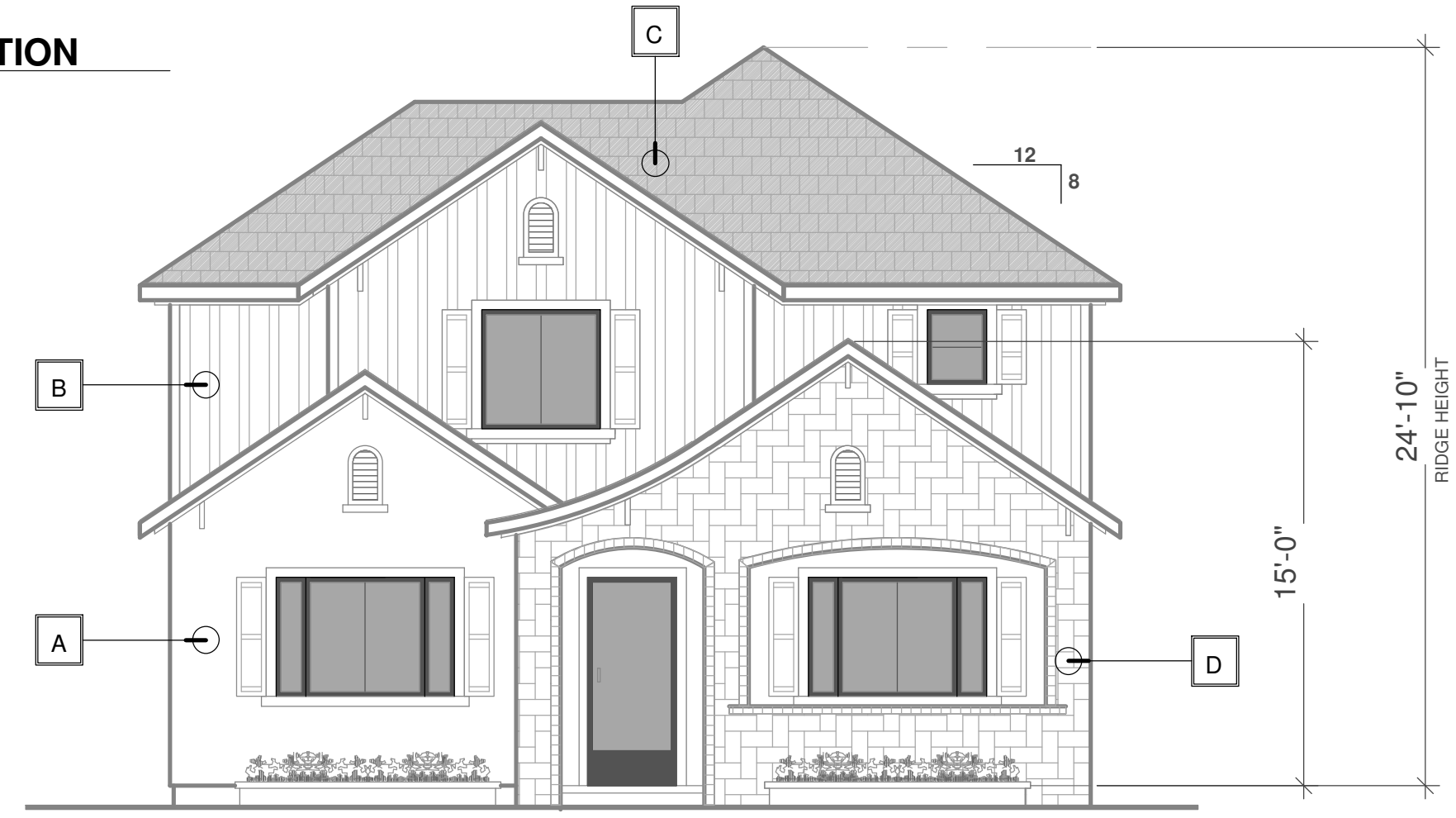


REAR ELEVATION

3/16" = 1'-0"



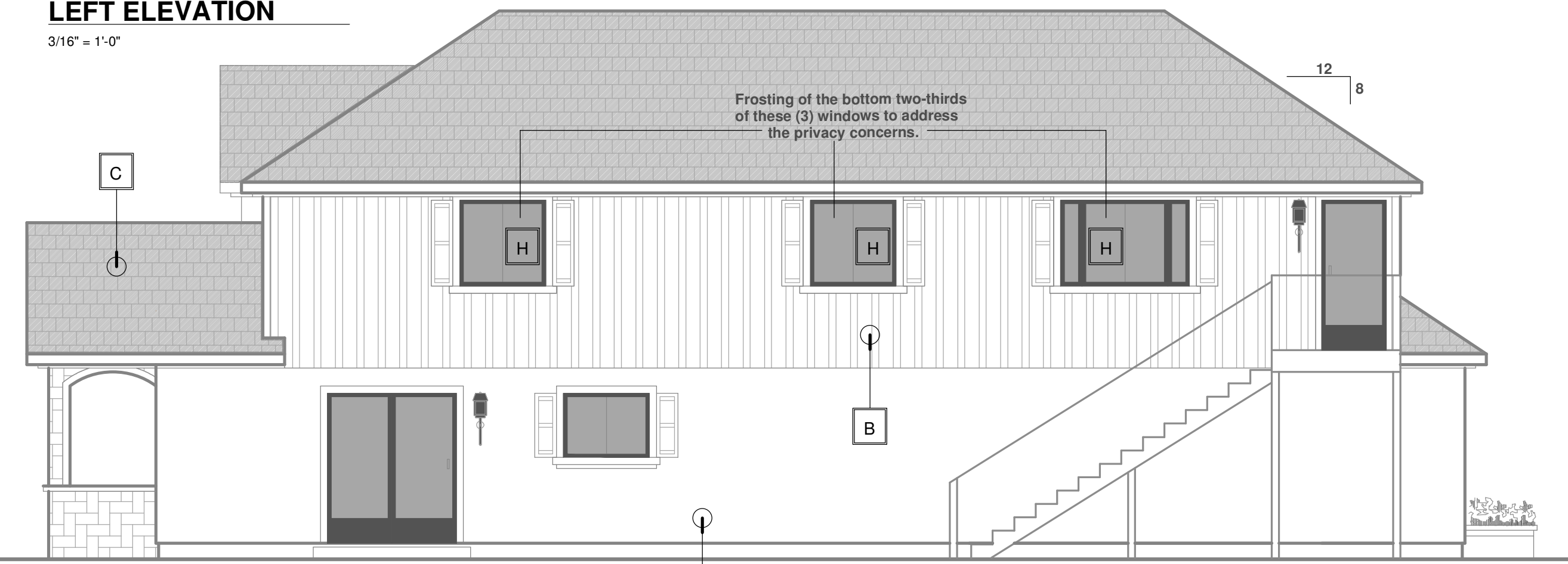
FRONT ELEVATION

3/16" = 1'-0"



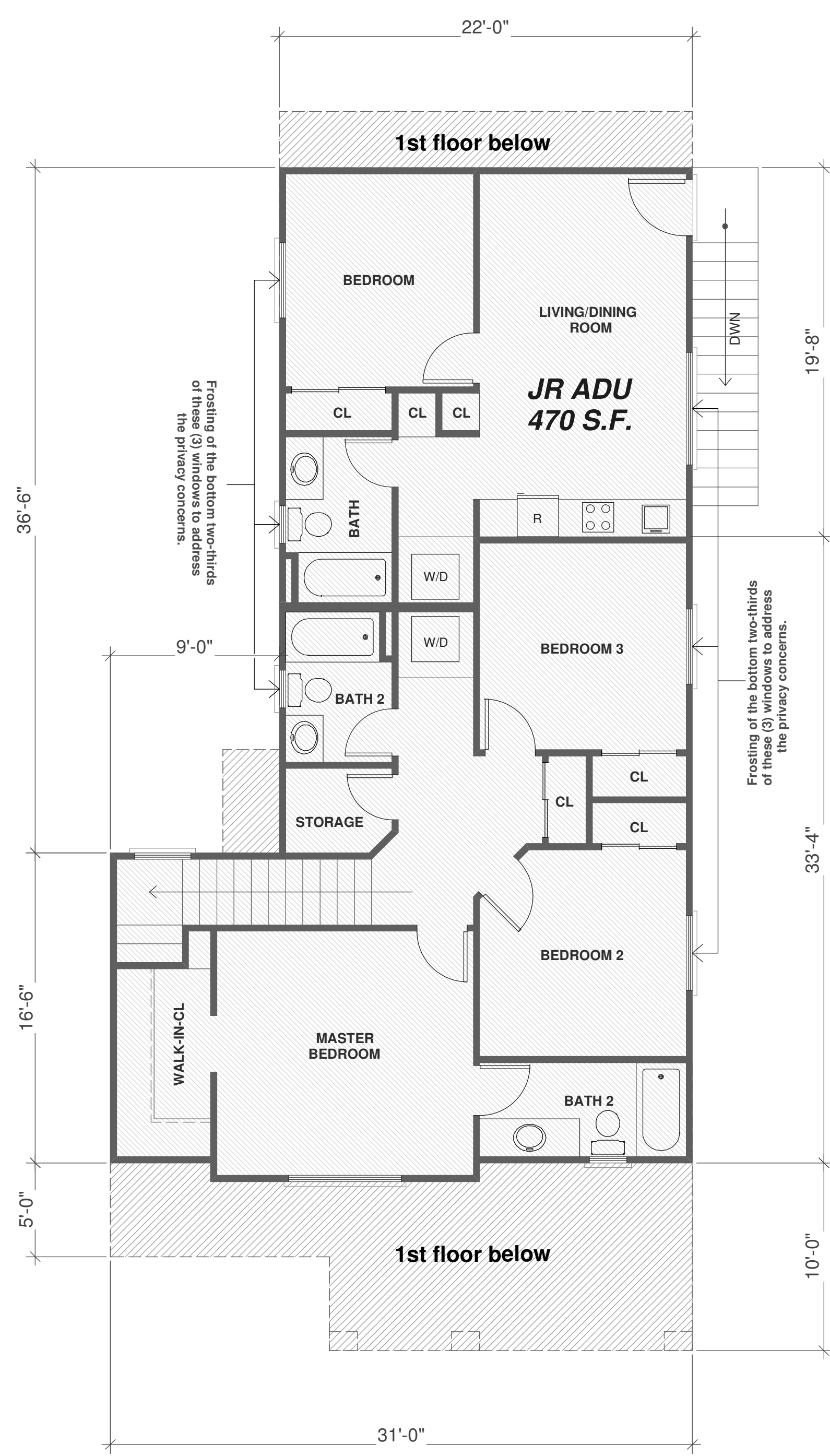
LEFT ELEVATION

3/16" = 1'-0"



RIGHT ELEVATION

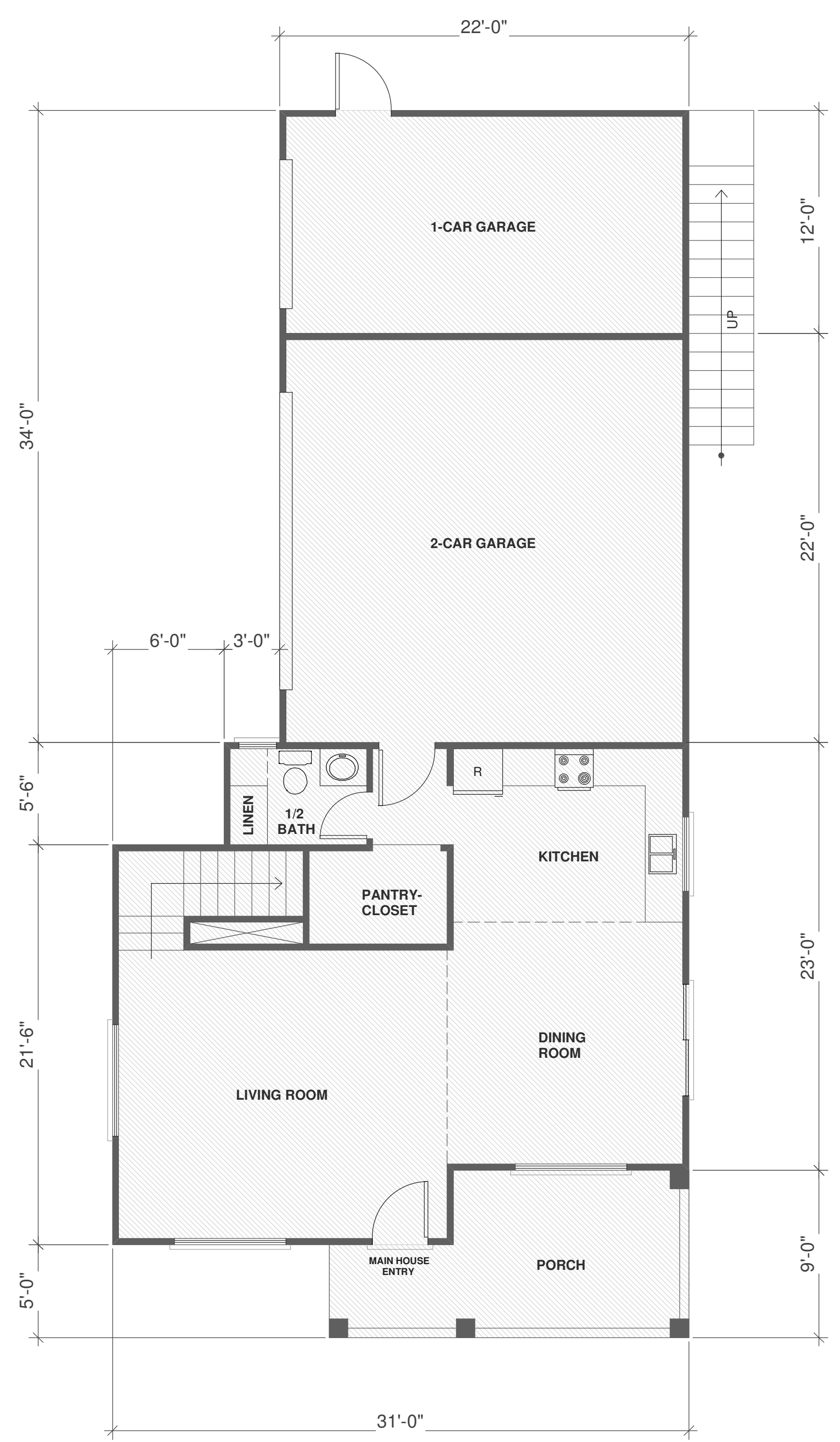
3/16" = 1'-0"



2ND. FLOOR PLAN (860 S.F.)

3/16" = 1'-0"

JR ADU (470 S.F.)



1ST. FLOOR PLAN (754 S.F.)

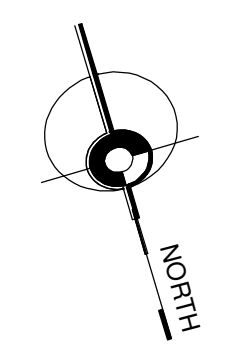
3/16" = 1'-0"

Garages (748 S.F.)

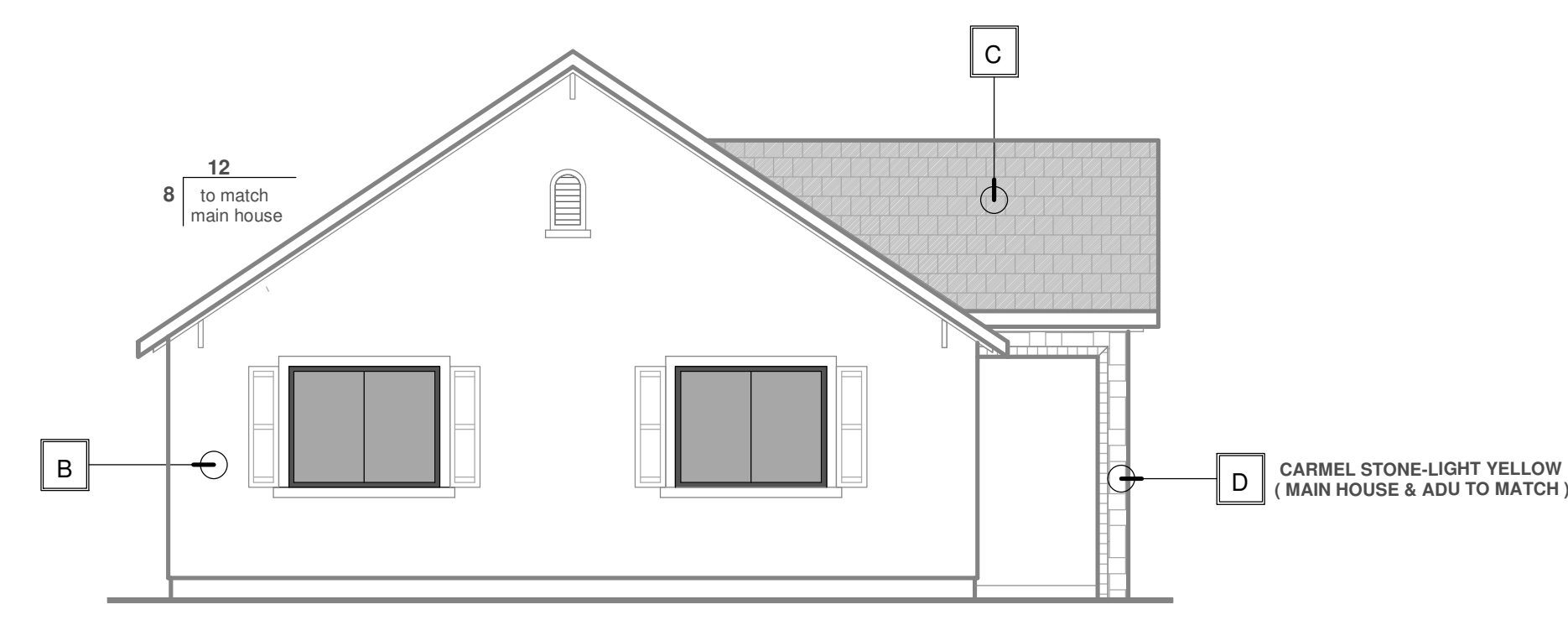
Porch (148 S.F.)

EXTERIOR FINISH SCHEDULE

A	EXTERIOR FINISH :	STUCCO FINISH-WHITE COLOR (MAIN HOUSE & ADU TO MATCH)
B	EXTERIOR FINISH :	VERTICAL WOOD SIDING-LIGHT GREY COLOR (MAIN HOUSE & ADU TO MATCH)
C	ROOFING MATERIAL :	ARCHITECTURAL GRADE 3-D TYPE ROOFING ASPHALT SHINGLES-DARK GREY COLOR (MAIN HOUSE & ADU TO MATCH)
D	STONE MATERIAL :	CARMEL STONE -LIGHT YELLOW (MAIN HOUSE & ADU TO MATCH)
E	OVERHANG FASCIA :	2X6 PAINTED RWD. (LIGHT GREY COLOR) (MAIN HOUSE & ADU TO MATCH)
F	ROOF OVERHANG :	1'-0" MAXIMUM (MAIN HOUSE & ADU TO MATCH)
G	WINDOW FRAMES :	VINYL DBL. GLAZED (BLACK COLOR) (MAIN HOUSE & ADU TO MATCH)
H	WINDOW TREATMENT :	FROSTING OF THE BOTTOM TWO-THIRDS OF THE WINDOWS AND CROSS SECTION SLIDING WINDOWS TO ADDRESS THE PRIVACY CONCERNS.



MAIN HOUSE & JRADU PLANS



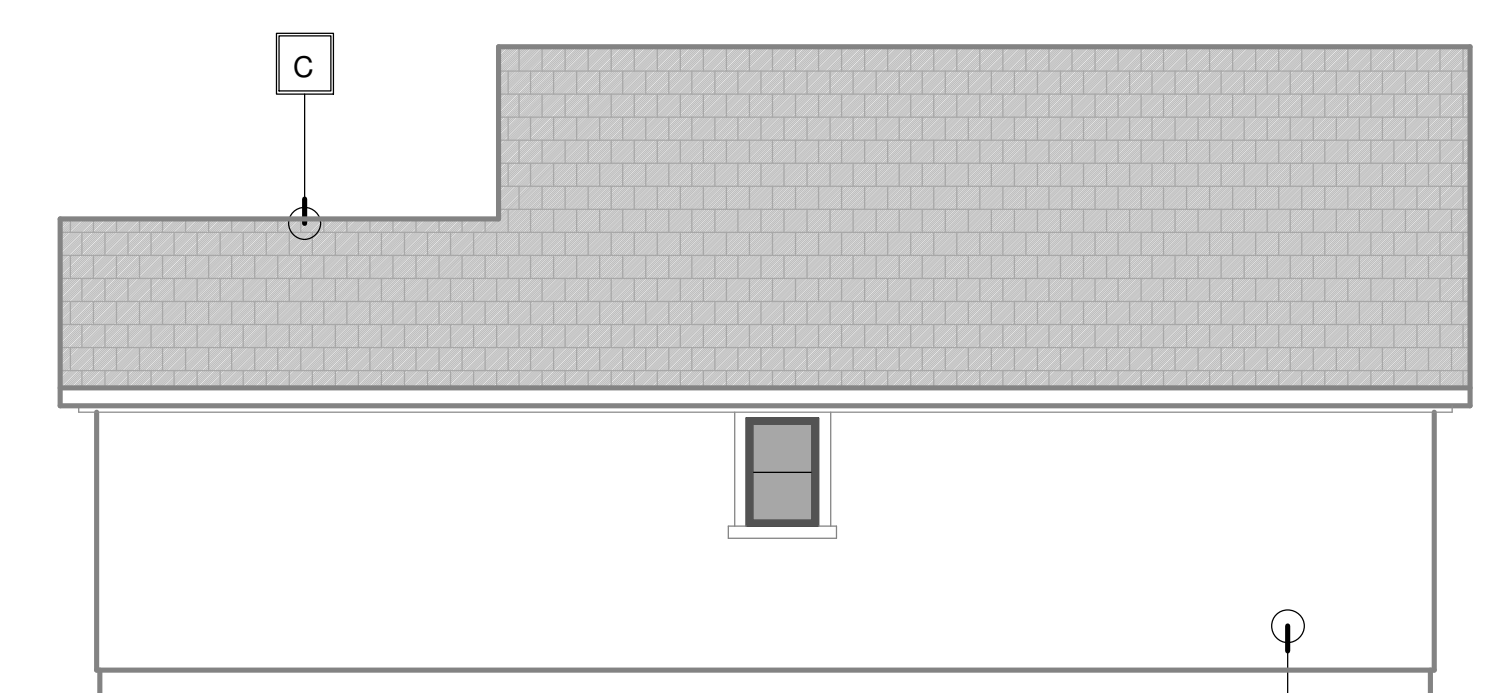
LEFT ELEVATION

3/16" = 1'-0"



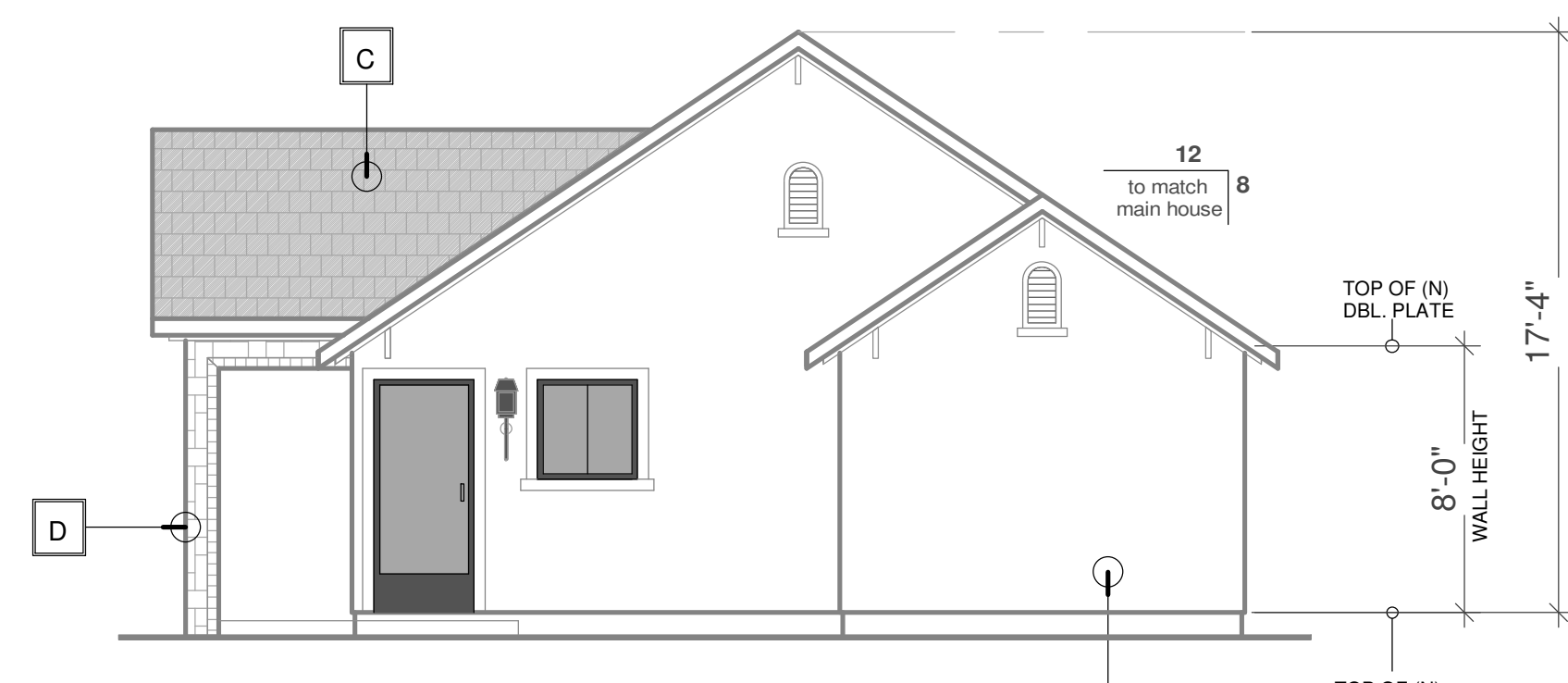
FRONT ELEVATION

3/16" = 1'-0"



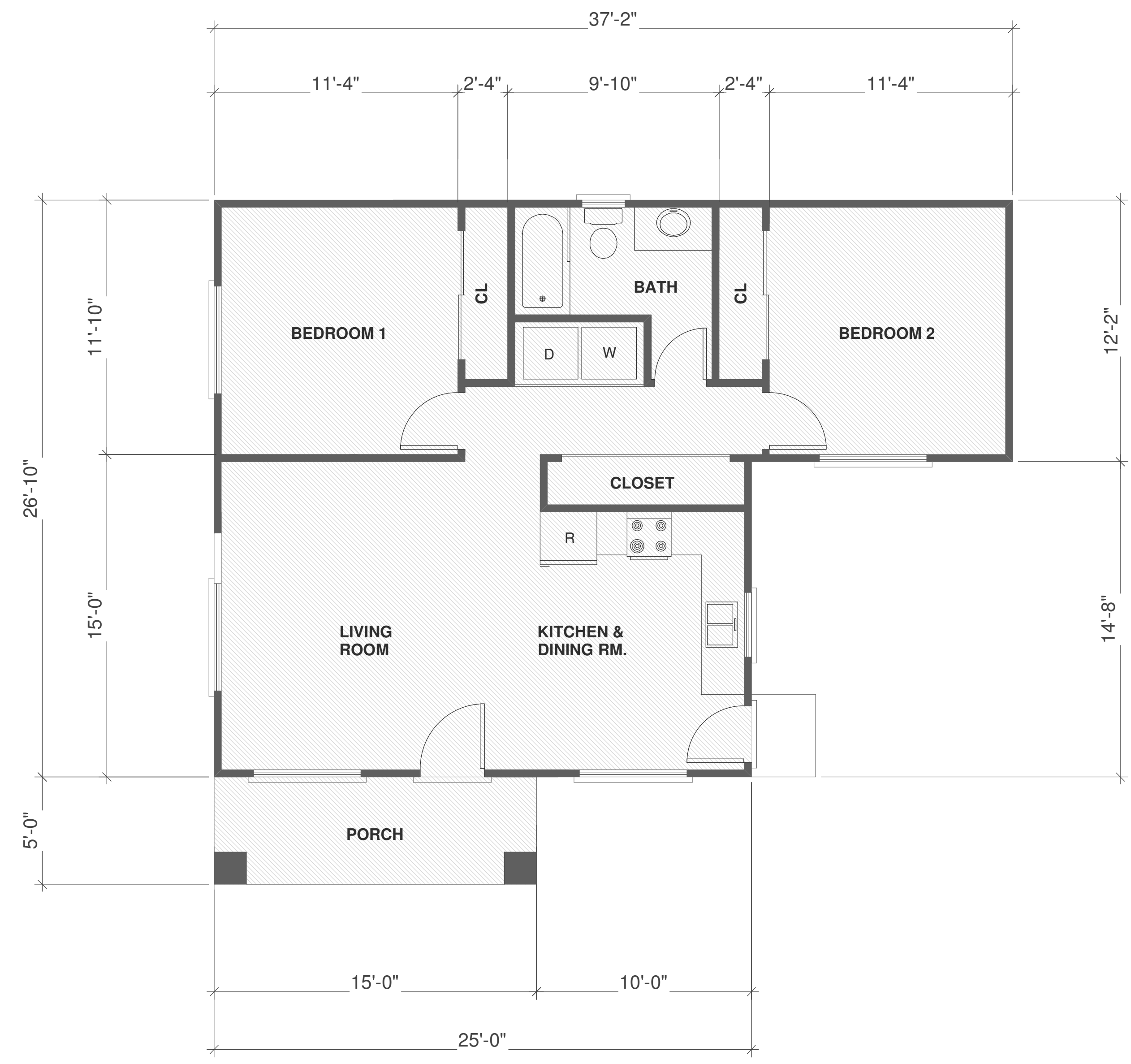
REAR ELEVATION

3/16" = 1'-0"



RIGHT ELEVATION

3/16" = 1'-0"



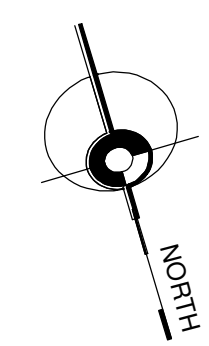
ADU FLOOR PLAN (818 S.F.)

1/4" = 1'-0"

Porch (75 S.F.)

EXTERIOR FINISH SCHEDULE

A	EXTERIOR FINISH :	STUCCO FINISH-WHITE COLOR (MAIN HOUSE & ADU TO MATCH)
B	EXTERIOR FINISH :	VERTICAL WOOD SIDING-LIGHT GREY COLOR (MAIN HOUSE & ADU TO MATCH)
C	ROOFING MATERIAL :	ARCHITECTURAL GRADE 3-D TYPE ROOFING ASPHALT SHINGLES-DARK GREY COLOR (MAIN HOUSE & ADU TO MATCH)
D	STONE MATERIAL :	CARMEL STONE -LIGHT YELLOW (MAIN HOUSE & ADU TO MATCH)
E	OVERHANG FASCIA :	2X6 PAINTED RWD. (LIGHT GREY COLOR) (MAIN HOUSE & ADU TO MATCH)
F	ROOF OVERHANG :	1'-0" MAXIMUM (MAIN HOUSE & ADU TO MATCH)
G	WINDOW FRAMES :	VINYL DBL. GLAZED (BLACK COLOR) (MAIN HOUSE & ADU TO MATCH)



DETACHED ADU PLANS