

**The City of Salinas**  
**Disabled (Blue) Parking Zones on Residential Streets Policy**

Policy adopted on August 15, 2006. Resolution No. 19056

To be consistent with appropriate use of special curb markings and in response to increasing requests for on-street disabled zones in residential areas, the City has approved policy with criteria for when to install disabled (blue) parking zones on residential streets. More specifically, this policy restricts the installation of these disabled zones to specific locations meeting the criteria below.

The City of Salinas is committed to the installation of the pedestrian facilities that improve accessibility for disabled members of the community. At residential areas, off-street parking (such as a garage or driveway adjacent to the house) locations provide the most convenience and safety for those requiring disabled access to a house.

The policy below intends to ensure that disabled parking on residential streets are installed where they are most needed and that residents who are disabled have safe and convenient access to their homes from their vehicles.

- I. **Application.** In order to receive consideration under this policy, an applicant must submit a written request to the **City of Salinas Development and Engineering Services Department, ATTN: Traffic Section, 200 Lincoln Avenue, Salinas, California 93901.**
- II. **Consideration.** Effective on the adoption of this policy, requests for on-street disabled parking (blue) zones shall be subject to the following criteria:
  1. Off-street parking facilities for the residential property do not exist. The property does not have a garage, driveway, or other on-site parking space that can be provided for the disabled member of the household; or
  2. On-street parking is unavailable. This criterion requires that the site be located adjacent to a school, apartment, and/or other businesses that consume on-street residential parking supply; and
  3. The path of travel from the proposed on-street parking stall to the home meets ADA/Title 24 path of travel requirements.

**The following criteria are required in all cases.**

4. Proof that the disabled resident has a permanent disabled placard on file; and

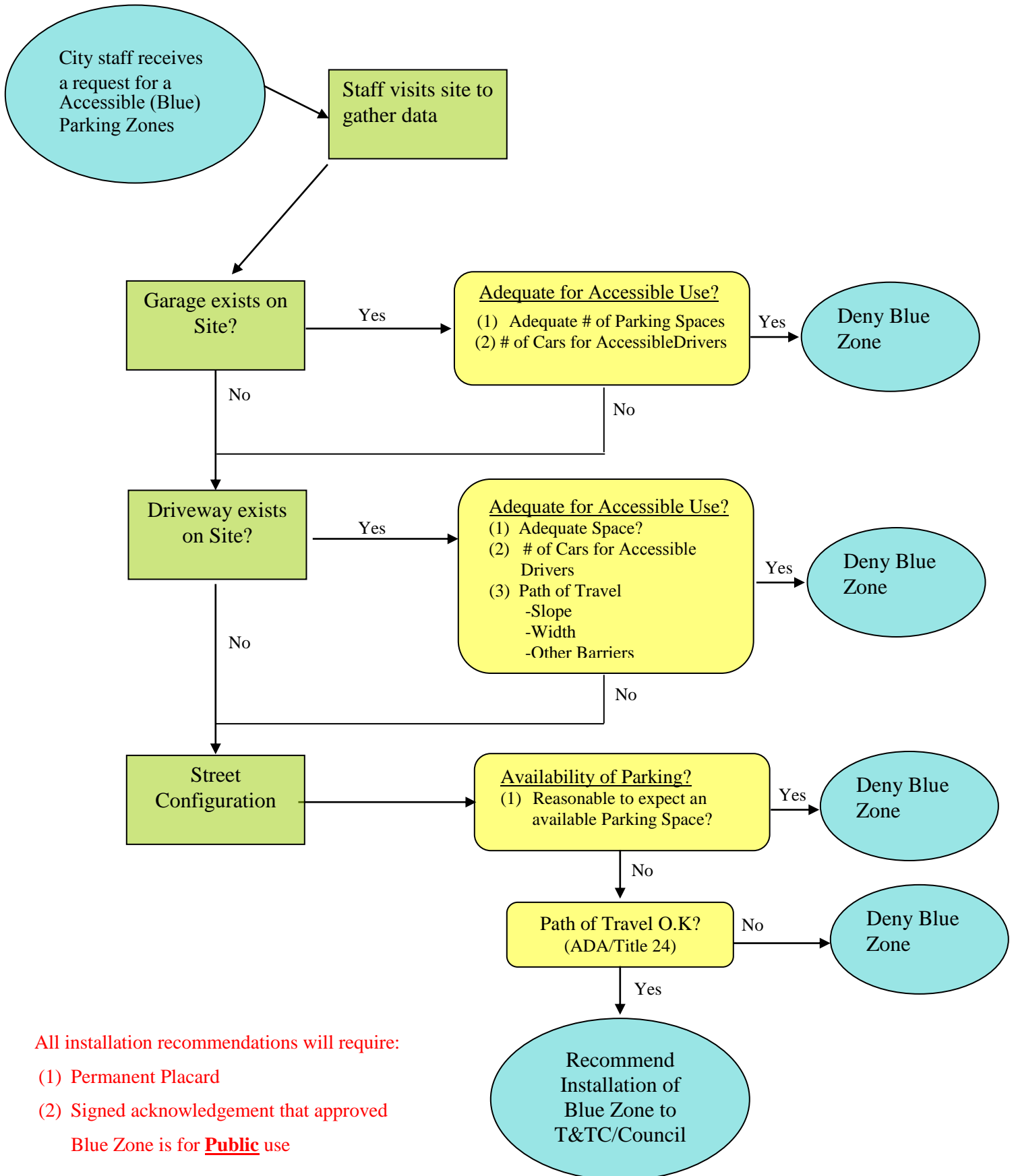
5. Signed statement acknowledging applicant understands that the on-street disabled parking requested can be used by other residents in the community that have a disabled placard.

This Policy provides a uniform process for the recommendation of an on-street disabled parking zone.

The City Engineer, at his or her discretion, may examine other considerations not part of this Policy's criteria. Results of these considerations may become the basis to support or oppose recommendation resulting from previously considered criteria.

- III. **Commission Consideration** City staff will bring its recommendation to the Traffic and Transportation Commission (T&TC). The meeting of the T&TC provides a public forum for the applicant or any impacted party to support or protest City staff's recommendation. The Traffic and Transportation Commission may recommend approval or denial of the applicant's request based on the criteria above for Disabled (Blue) Parking Zones on residential streets.
- IV. **Council Consideration.** The City Council makes the final decision regarding the request for Disabled (Blue) Parking Zones on residential streets. The meeting of the City Council provides another public forum to appeal decisions of the T&TC made following the application of this policy.
- V. The City Engineer, at his or her discretion, may remove any Disabled (Blue) Parking Zone if it is no longer needed (e.g., when resident has moved, when the situation no longer meets the above criteria, etc.).

# Flowchart for Salinas Accessible (Blue) Parking Zones on Residential Streets Policy



All installation recommendations will require:

- (1) Permanent Placard
- (2) Signed acknowledgement that approved Blue Zone is for **Public** use