

General Plan Update



Jonathan Moore, Senior Planner
September 19, 2023



Background and Housing Element update

- Transitioning from initial engagement to drafting
- Working on preliminary HCD comments
- Reviewing other element policies with Steering Committee



Notice of Preparation

- Formal start of EIR
- Opportunity for scope comments

Pillars	Built Environment	Environment and Sustainability	Socioeconomic Systems
Elements	<ul style="list-style-type: none"> • Land Use and Infrastructure • Community Design • Housing • Circulation • Noise 	<ul style="list-style-type: none"> • Conservation & Open Space • Environmental Safety 	<ul style="list-style-type: none"> • Health and Environmental Justice • Economic Development • Public Safety • Arts, Culture, and Youth

Bold = state-mandated elements

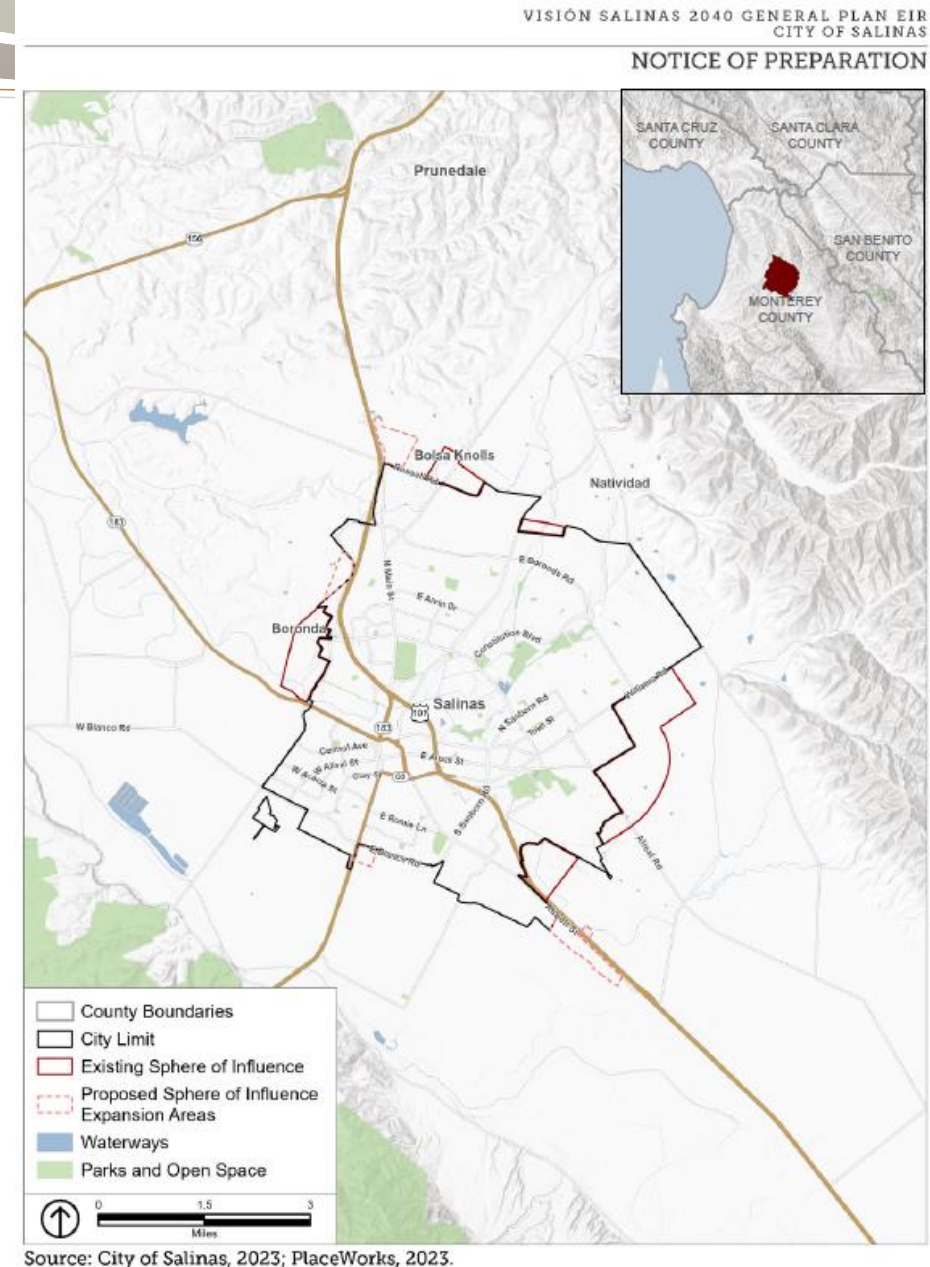
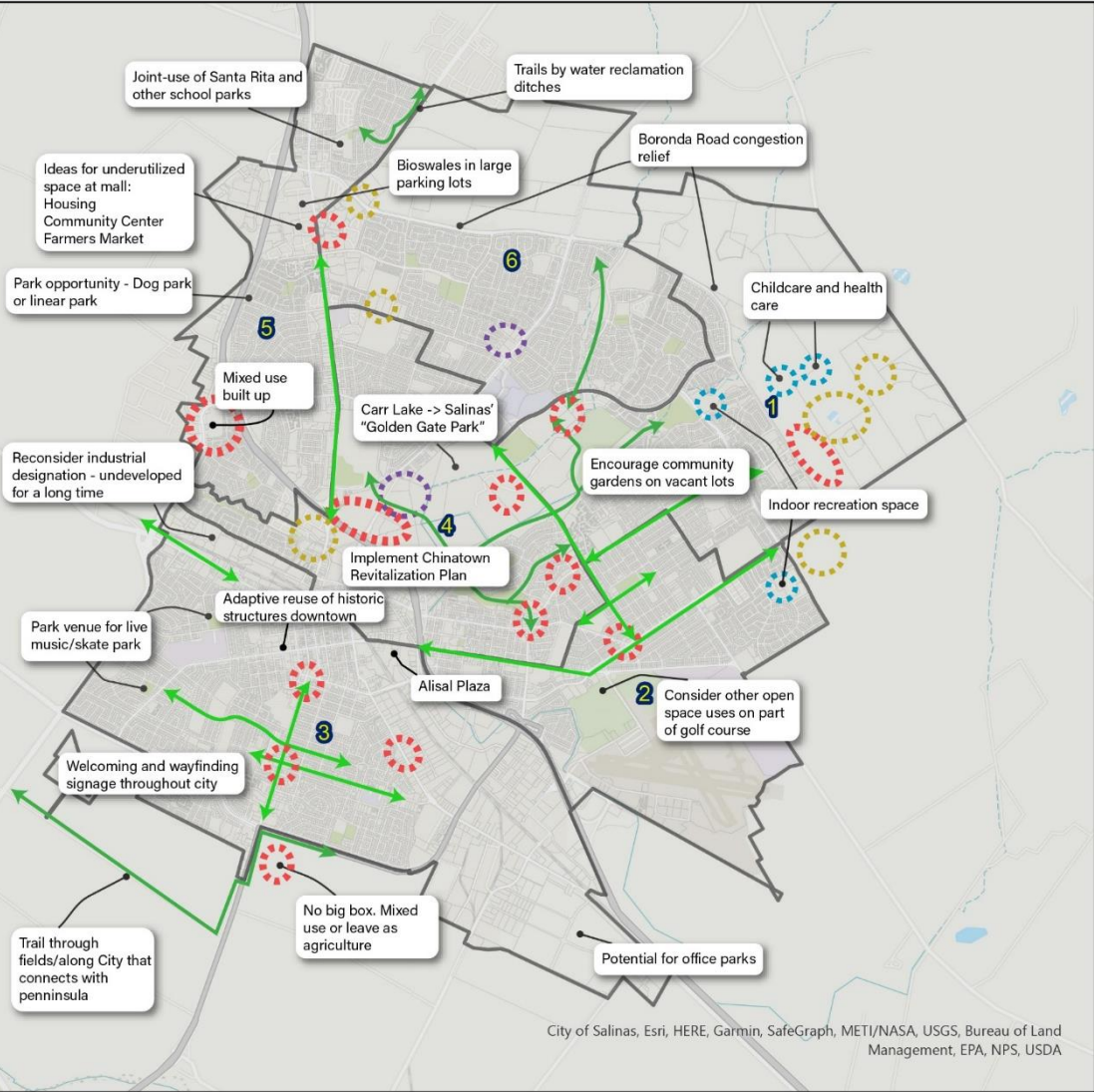


Figure 1
Local and Regional Vicinity Map



- | | | | | | |
|--|---------------------|---|----------------------|---|----------------------------|
|  | Mixed use |  | Maker space |  | On-street bike lanes |
|  | Multifamily housing |  | Health/youth service |  | Off-street bike lanes/path |

Draft Place Type Basis



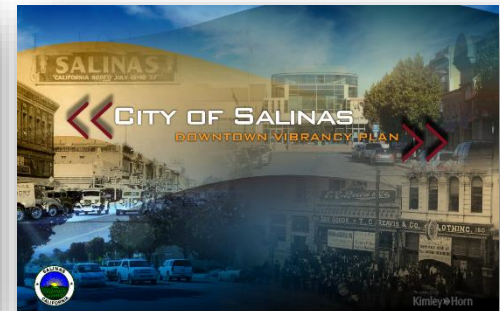
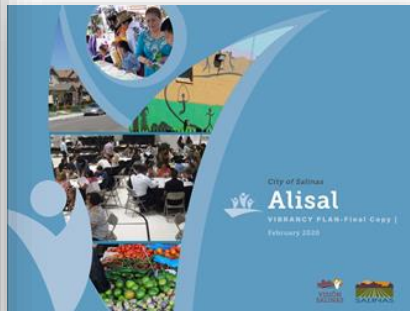
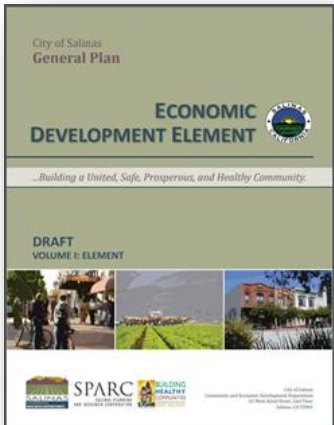
More housing and mixed-use development

Family-friendly entertainment – mini-golf or go-karts



Additional park and recreation space

Space for new and growing businesses

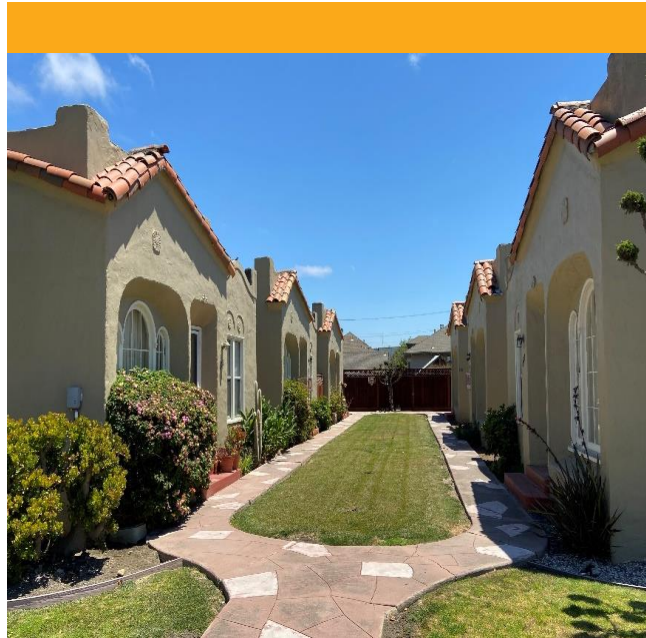


What do place types achieve?

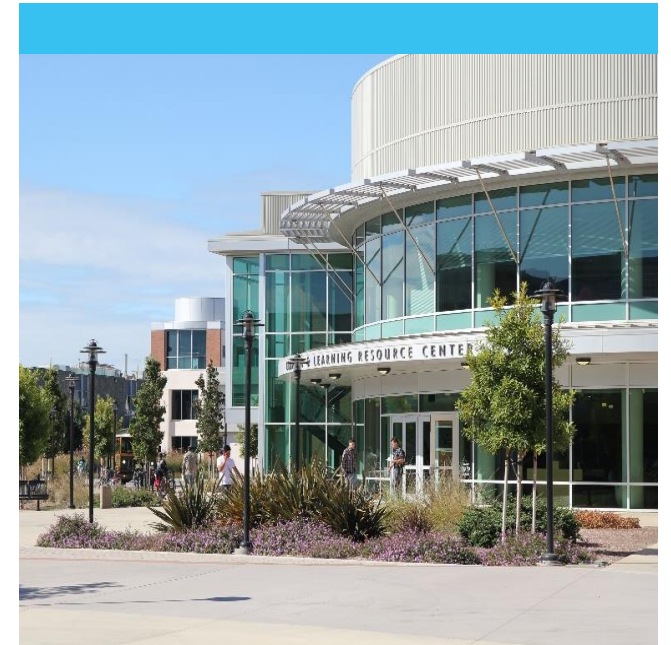
- Focus on building form and placemaking
- Include more housing and mixed-use options than in the current General Plan
- Identify different types of allowed land use activities



Mixed Use Corridor

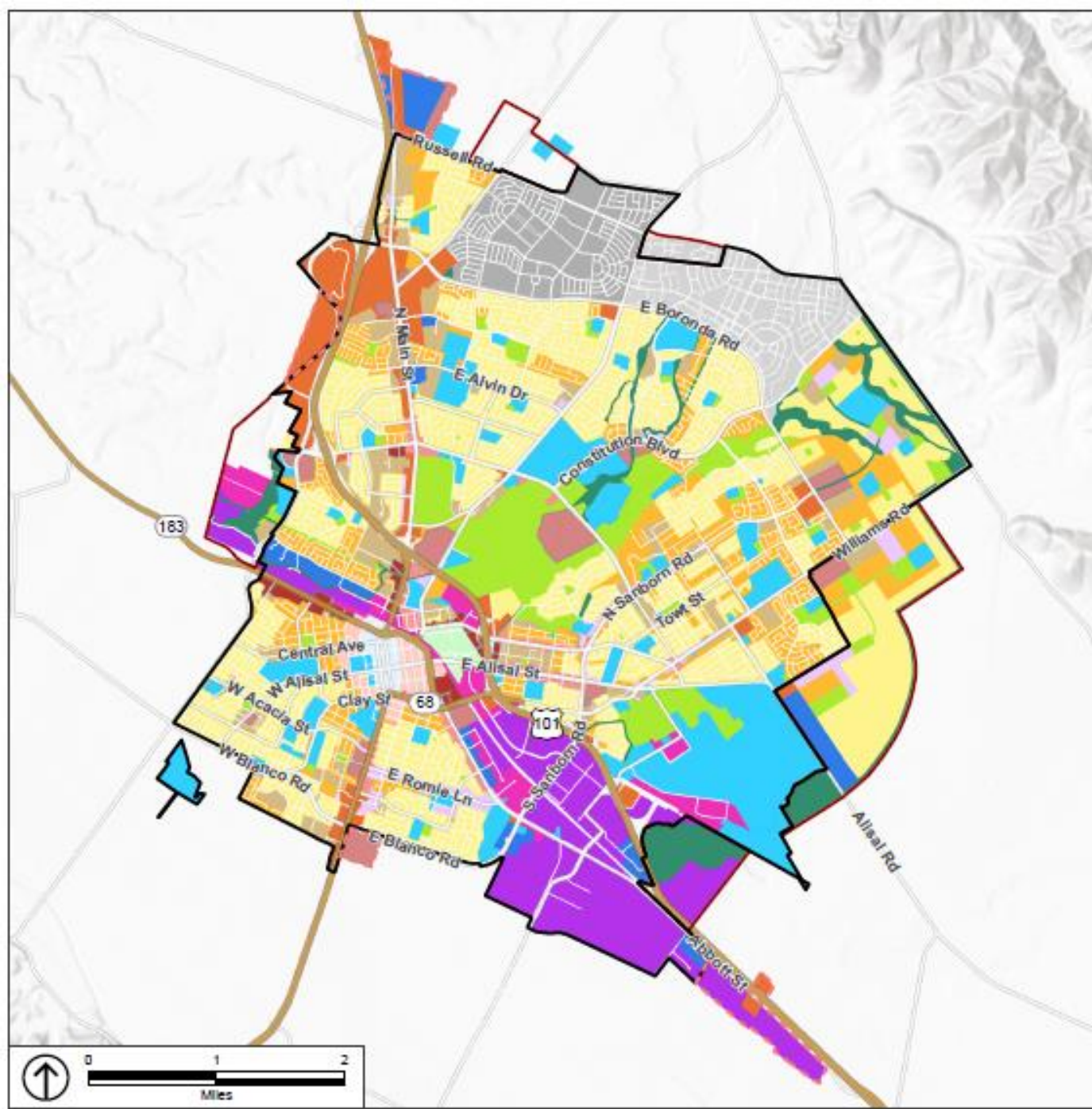


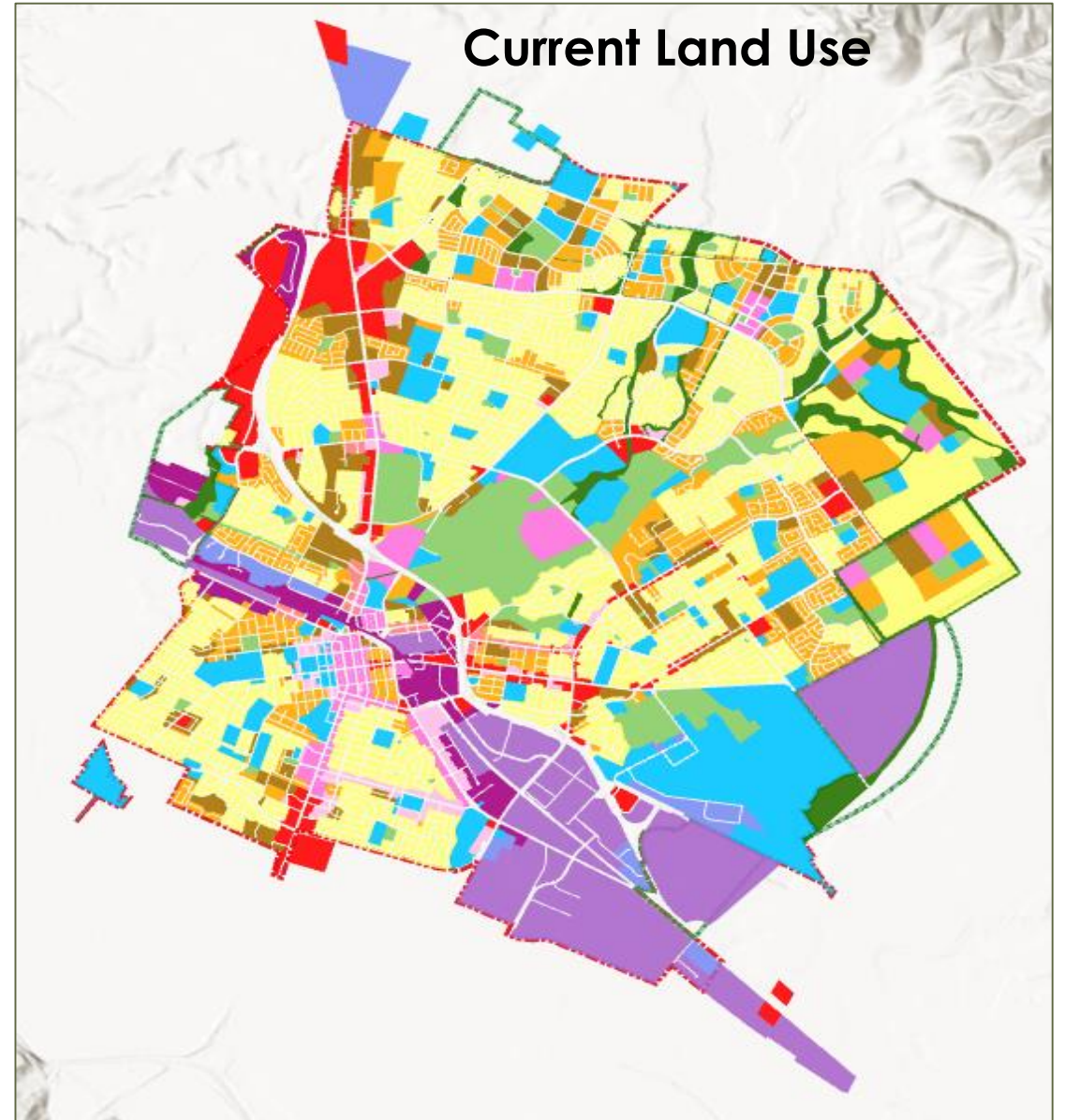
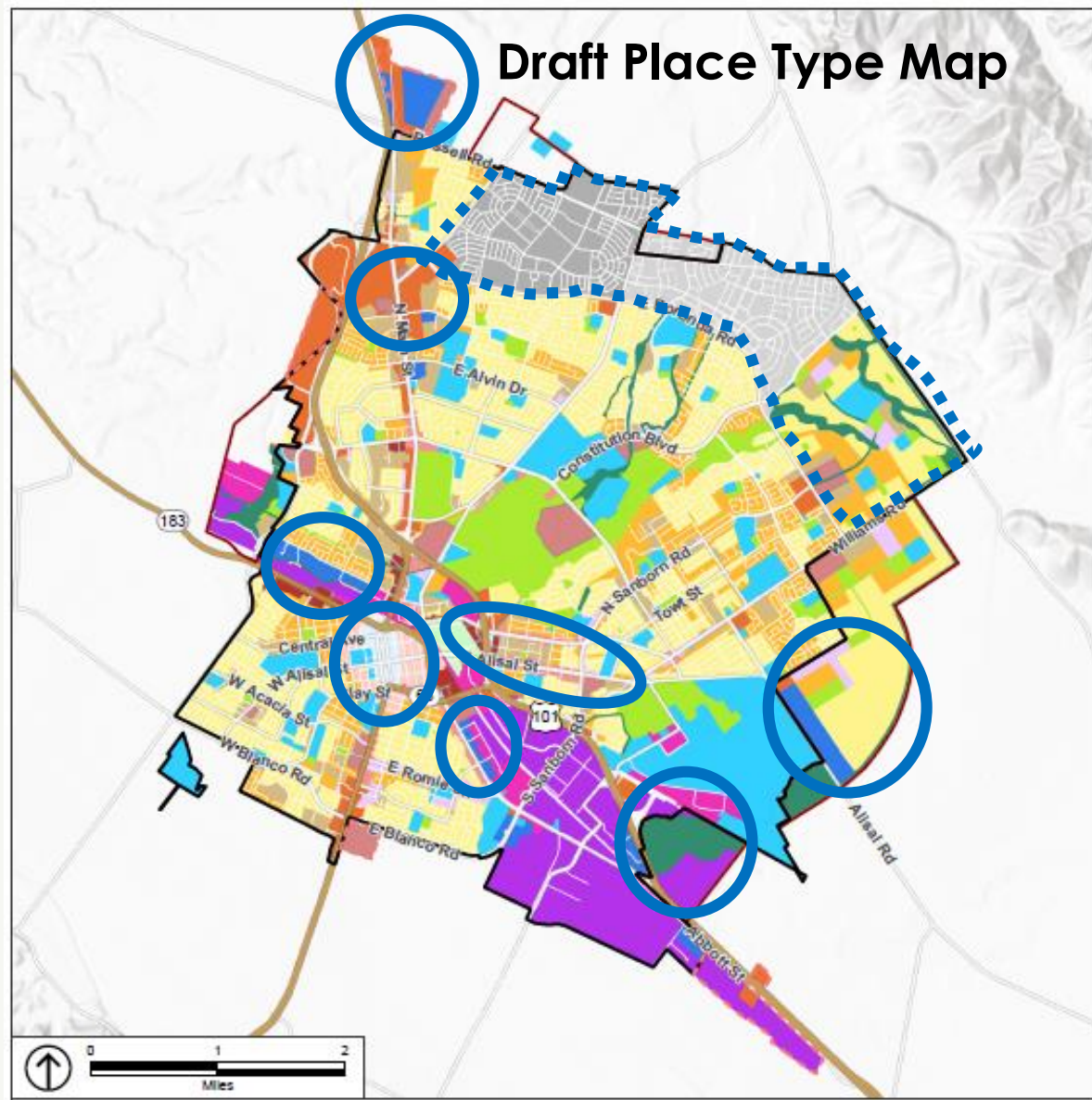
*Blended Residential
Neighborhood*



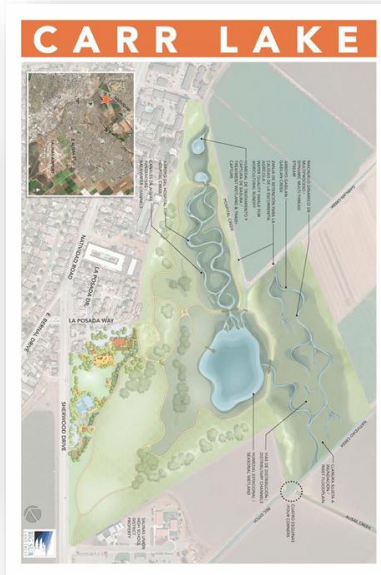
Civic and Institutional

Draft Place Type Map

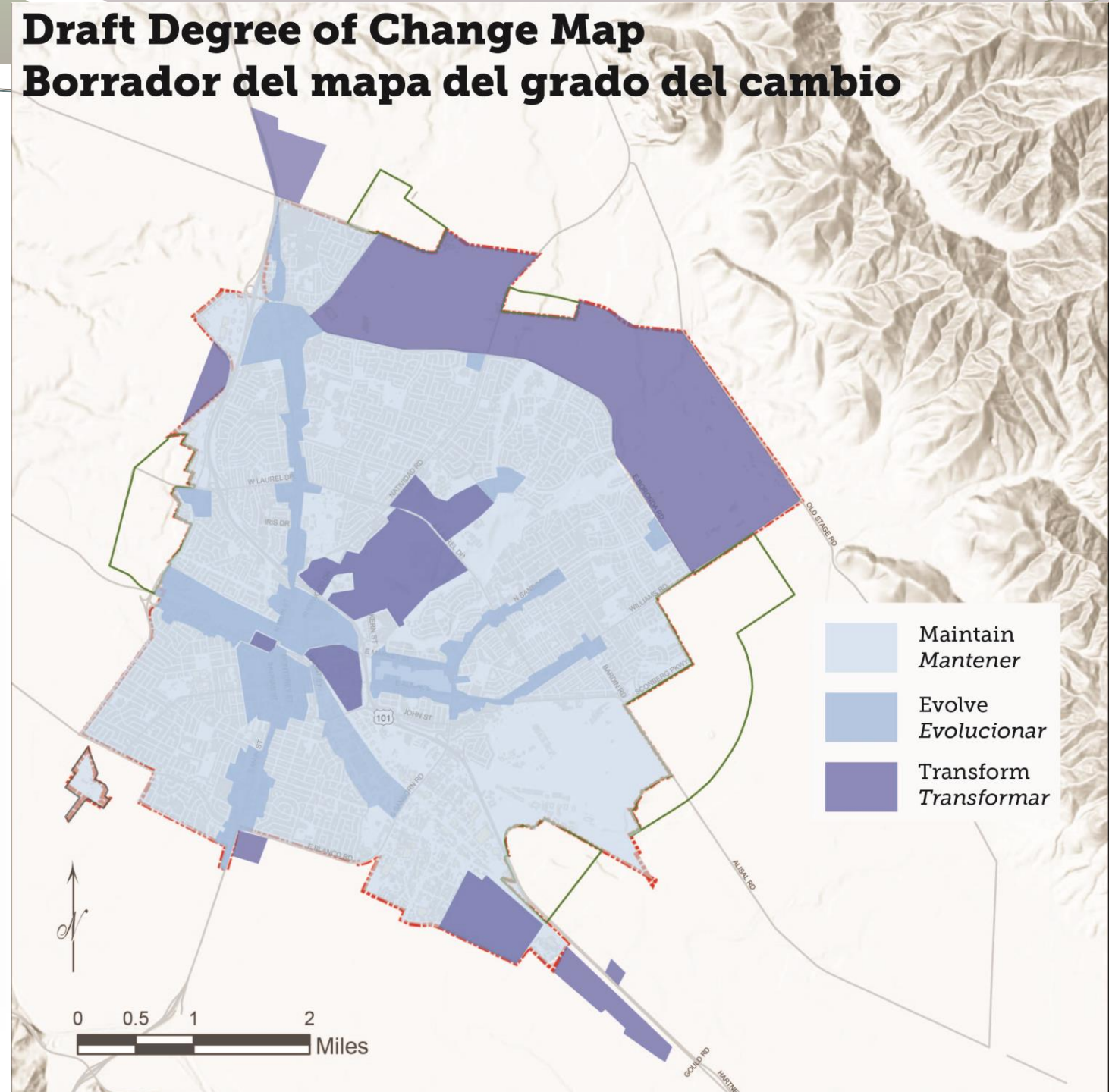




Where is change likely in
next 20 years?



Draft Degree of Change Map Borrador del mapa del grado del cambio



Next steps

- Scoping meeting 9/27
 - Steering Committee meetings at 312 E Alisal St during City Hall construction
- CAP and continued policy review
- Drafting of the General Plan/EIR



Questions/Comments