

# City of Salinas

## October 2024

### Stormwater Master Plan Update

PRESENTED TO CITY OF SALINAS CITY COUNCIL  
MARCH 11, 2025



Wallace Group | DEDICATION TO SERVICE

# PRESENTATION AGENDA

- Overview of the City's Storm Drain System
- Purpose of the Master Plan
- Proposed Stormwater Projects
- Risks and Impacts
- Funding
- Questions







# STORM DRAIN SYSTEM



Wallace Group | DEDICATION TO SERVICE



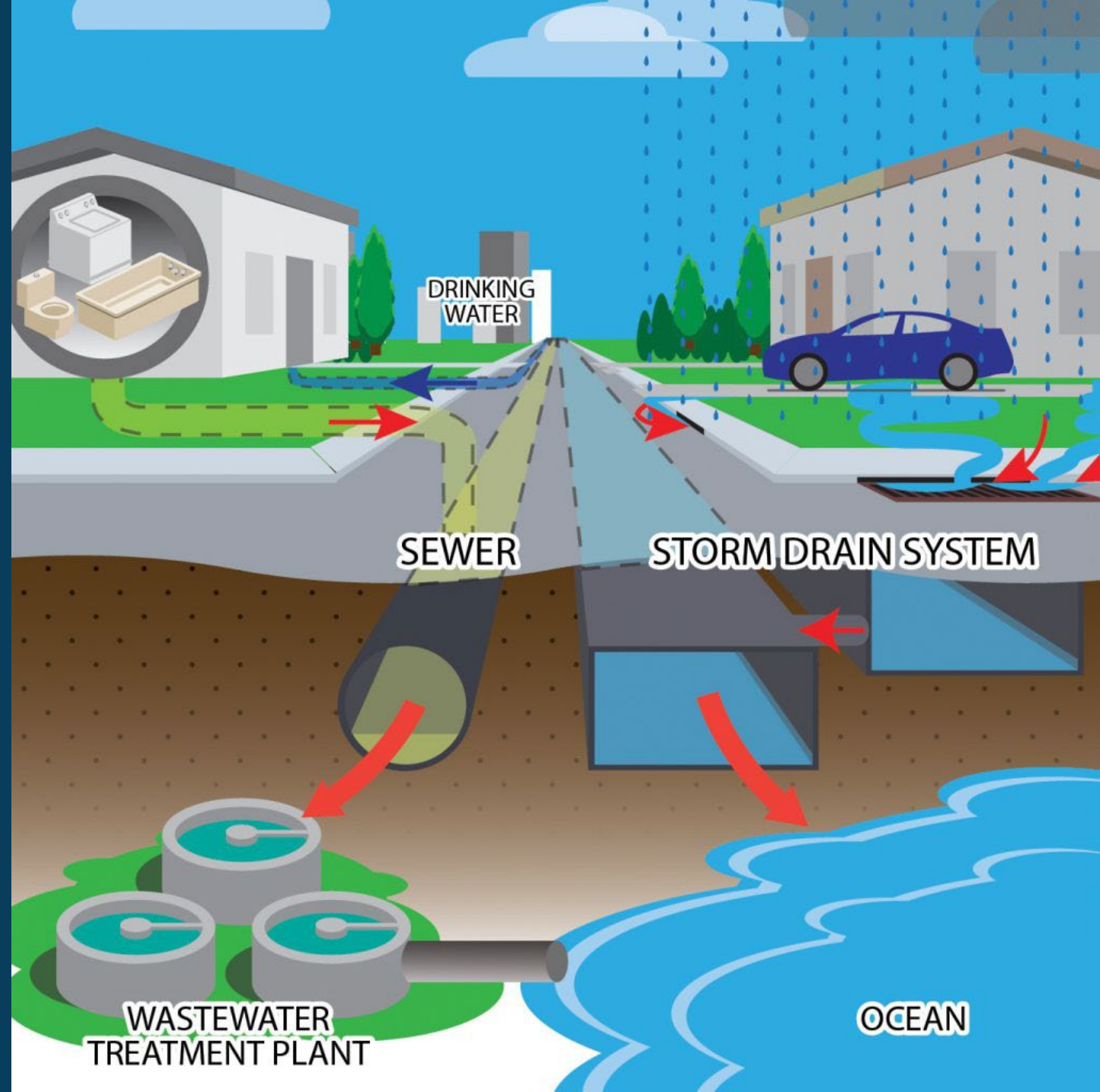
# Storm Drain Systems

- Pipes and channels
- Manholes
- Inlets
- Outfalls

Photo Credit: <https://www8.honolulu.gov/swq/info-resources/our-storm-water-system>



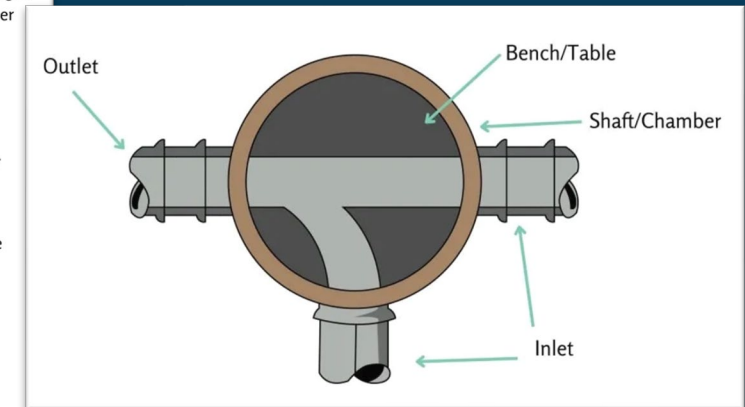
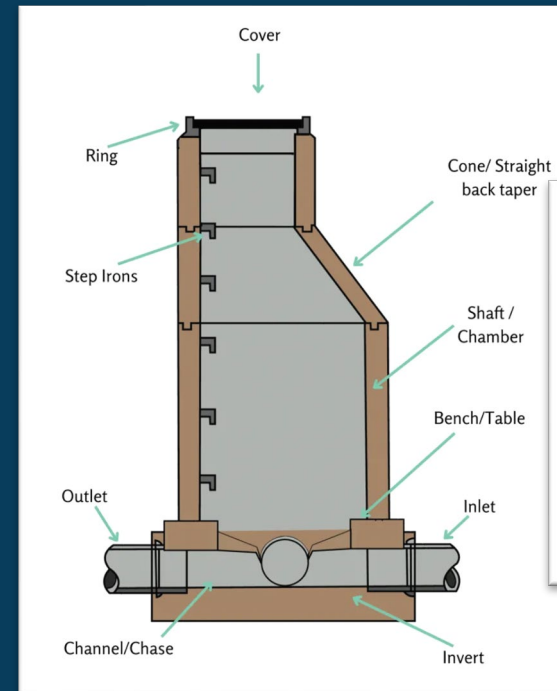
Wallace Group | DEDICATION TO SERVICE





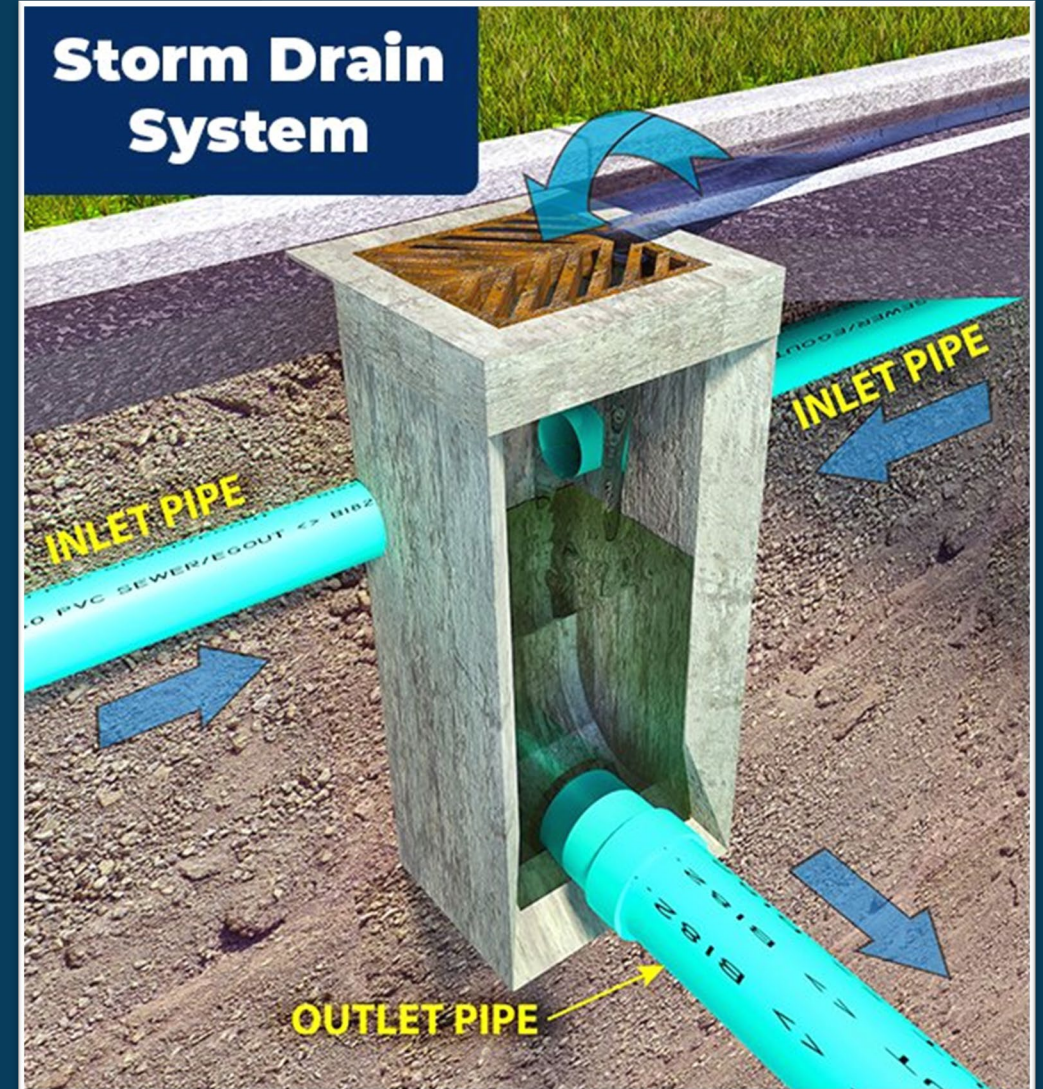


# Storm Drain Manholes



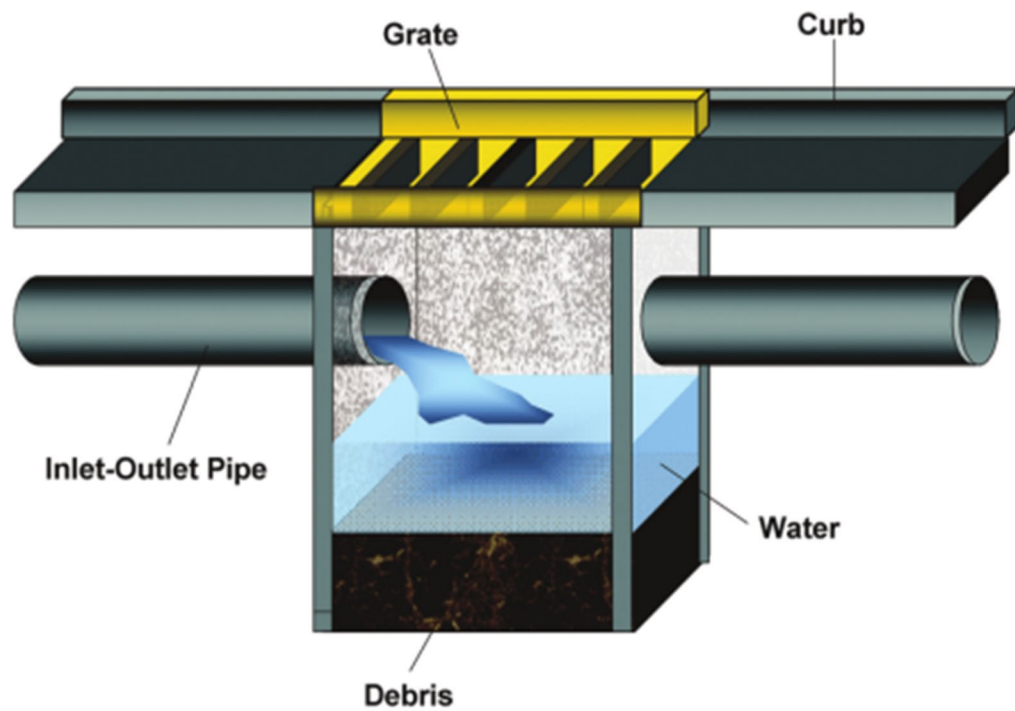


# Storm Drain Inlets



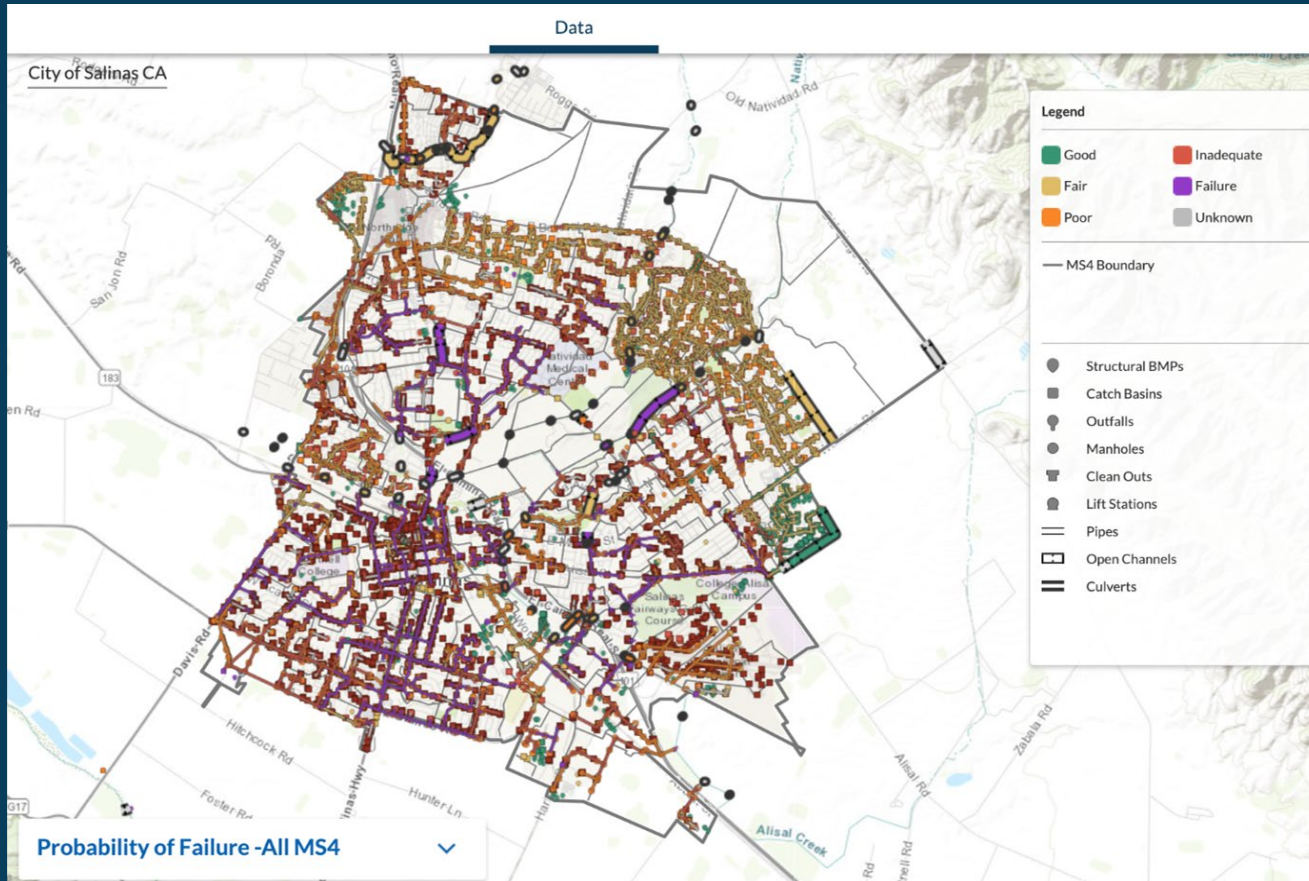


# Storm Drain Inlets





# Municipal Separate Storm Sewer System (MS4)



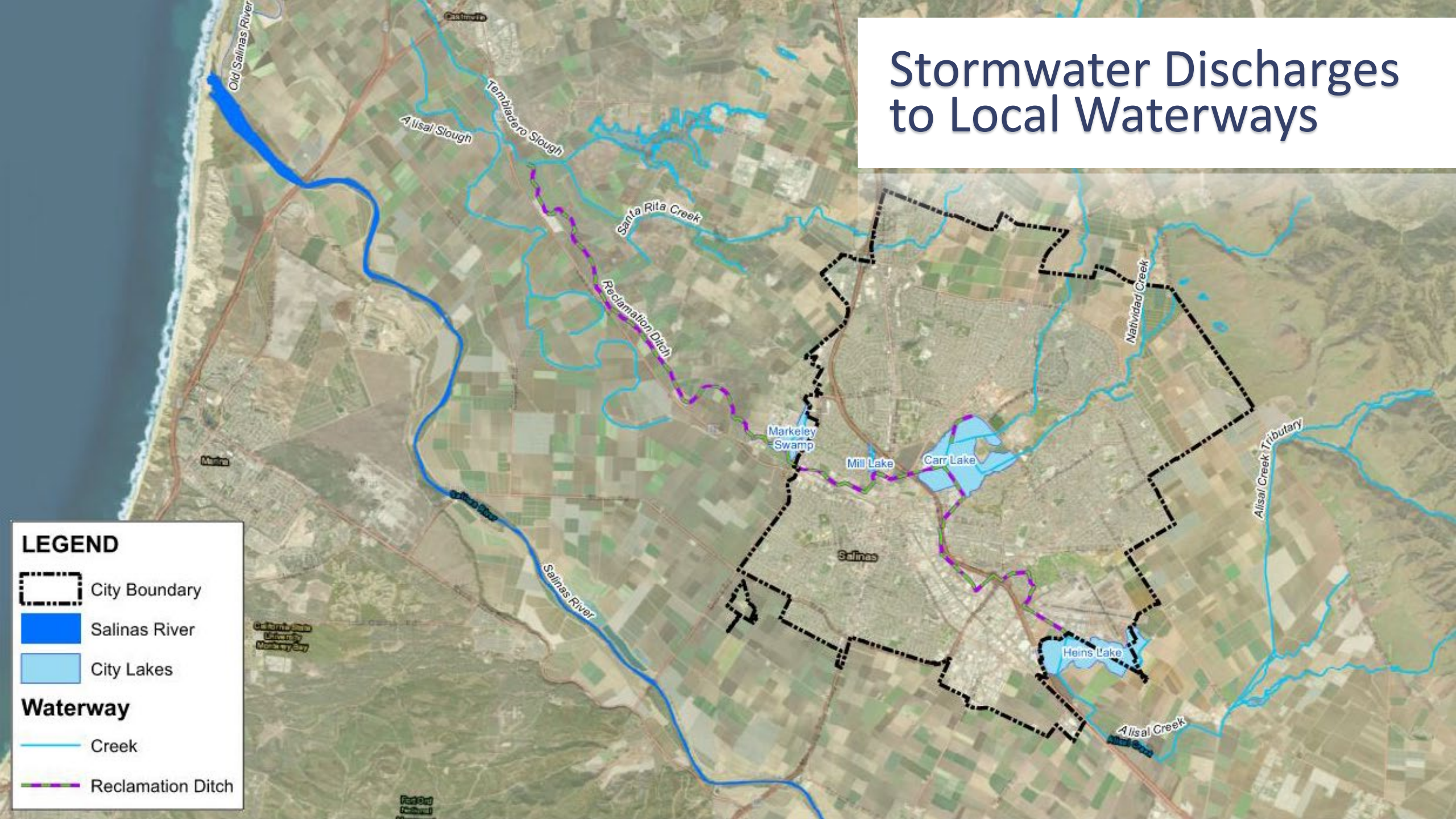
## City of Salinas (MS4)

- Over 6,000 assets
- Over 145 miles of pipes, culverts, and channels





# Stormwater Discharges to Local Waterways







# PURPOSE

Of the SWMP

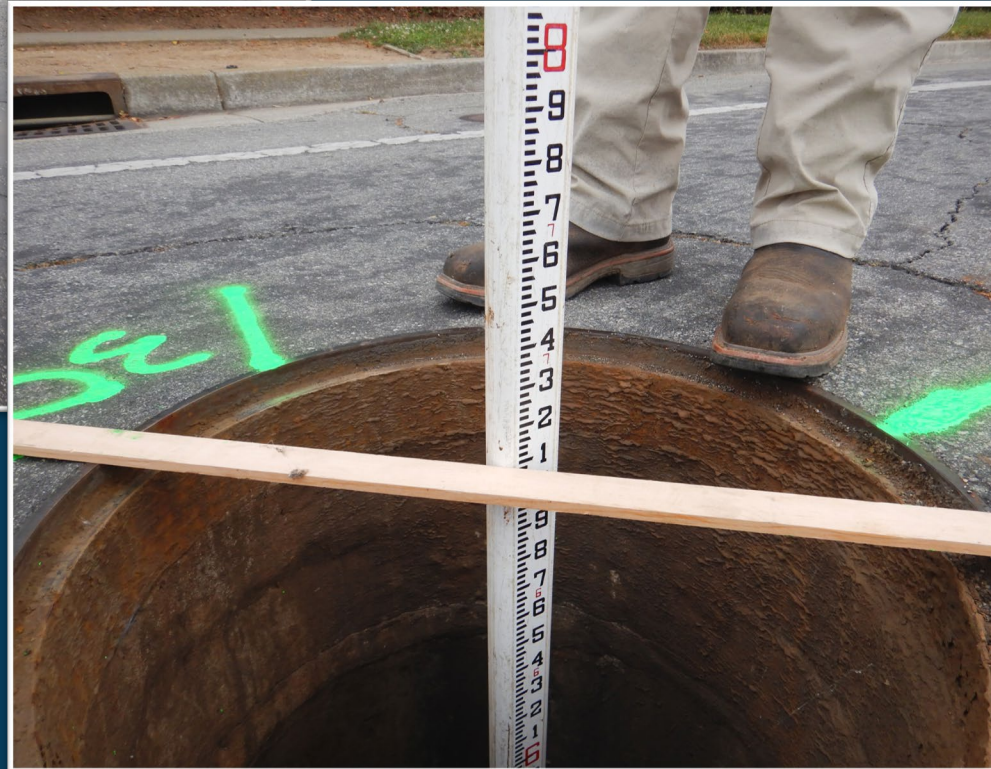
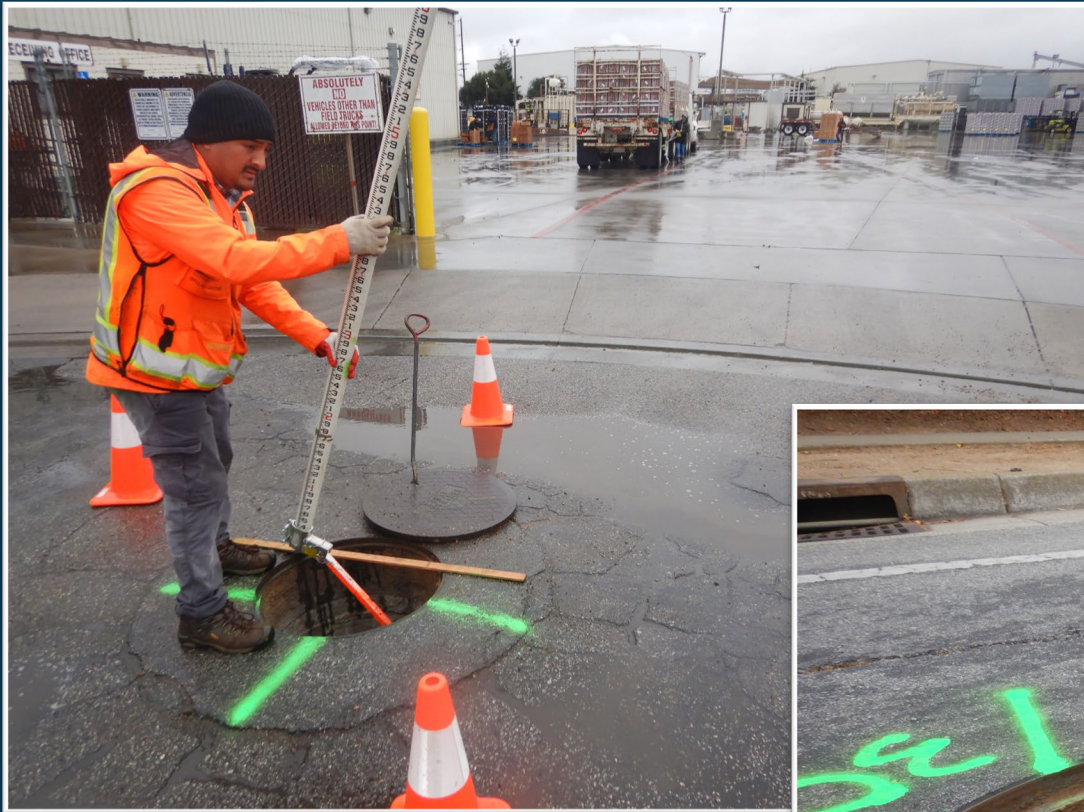
UNDERSTAND THE  
CONDITION OF THE  
EXISTING SYSTEM

IDENTIFY AND  
PRIORITIZE  
NECESSARY PROJECTS





# Understand the System



- TOPO AND MAPPING
- STAFF INTERVIEWS
- FIELD REVIEWS





# Understand the System

- TOPO AND MAPPING
- STAFF INTERVIEWS
- FIELD REVIEWS

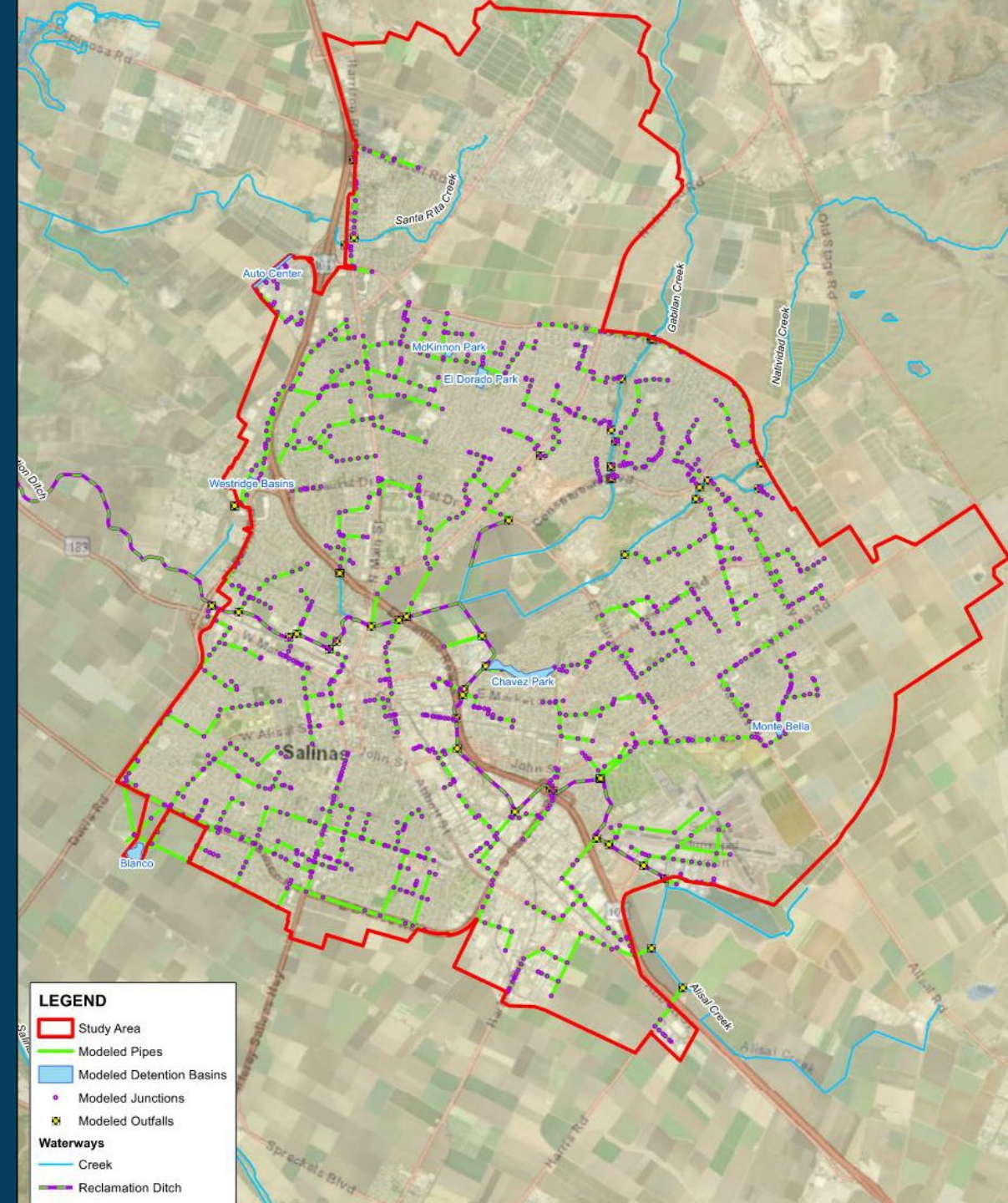
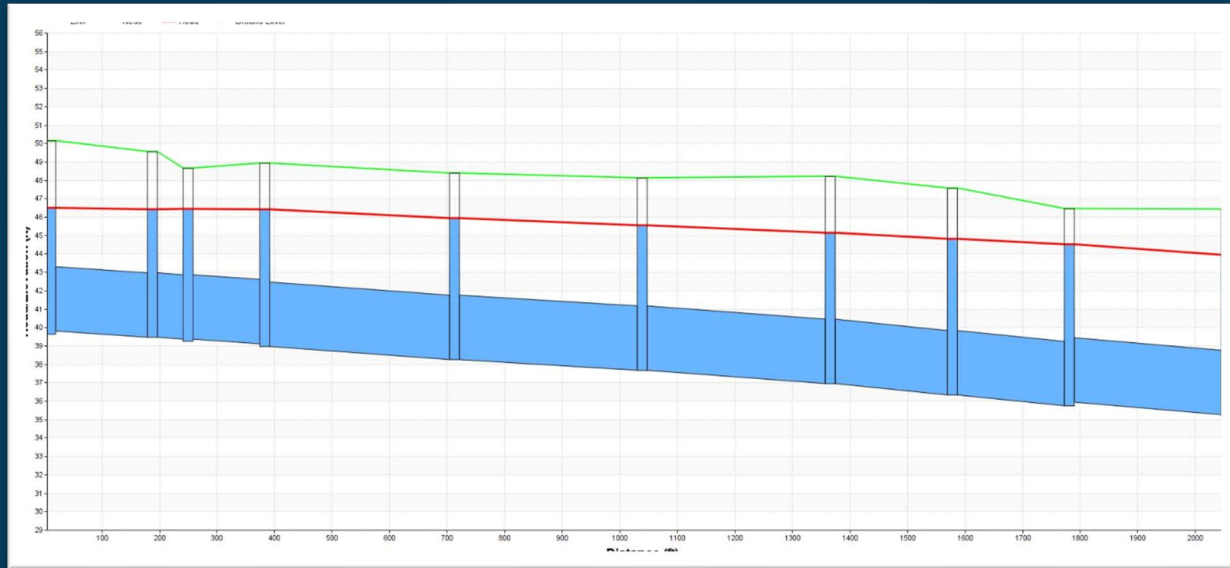




# Understand the System

## MODELING

- SURFACE RUNOFF
- UNDERGROUND INFRASTRUCTURE

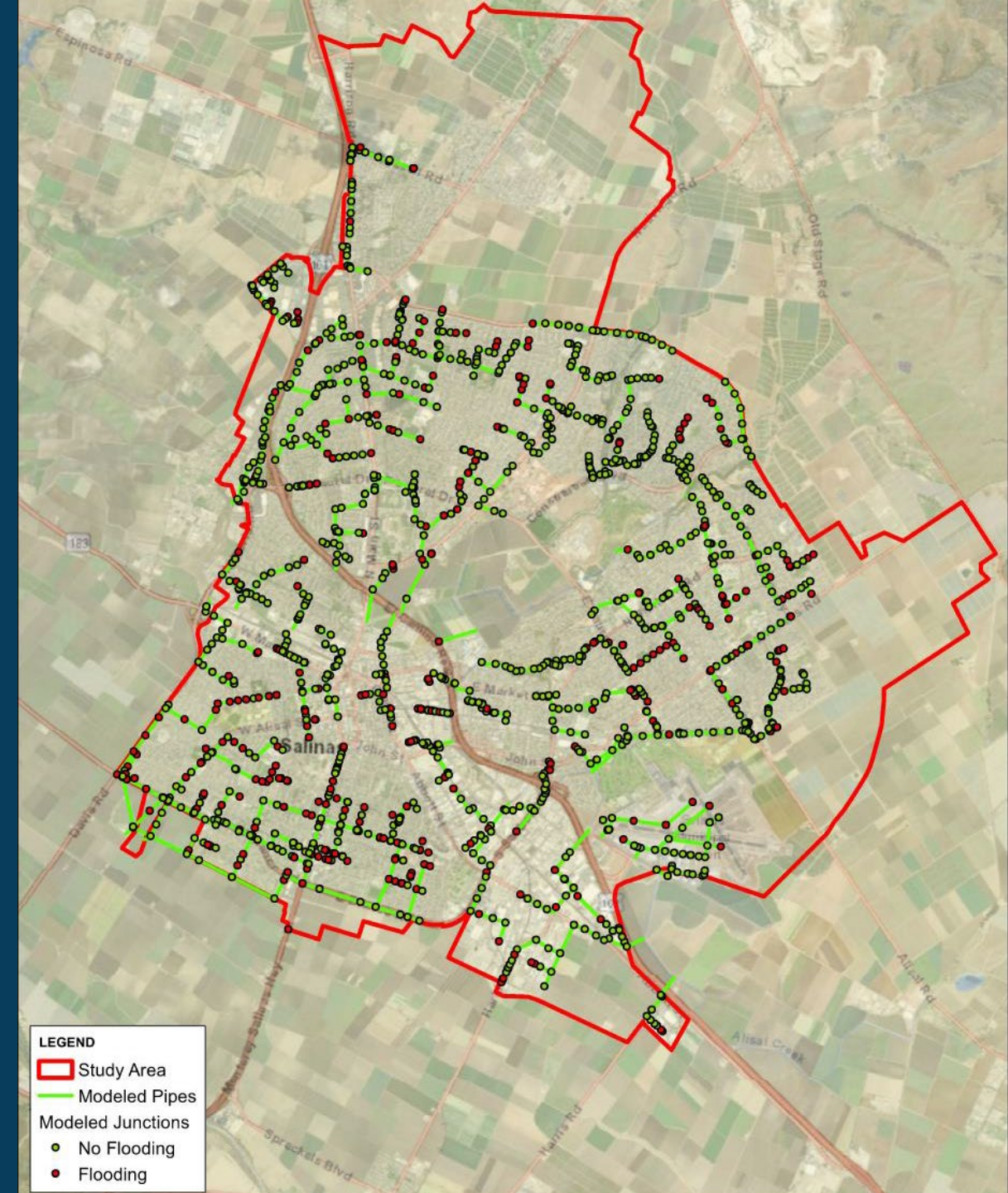




# Identify & Prioritize Projects

## Priority Ranking

- Flood Frequency
- Flood Severity
- Climate Resiliency
- Public Safety
- Critical Facilities
- Evacuation Routes
- High Traffic Roads



### LEGEND

- Study Area
- Modeled Pipes
- Modeled Junctions
  - No Flooding
  - Flooding

A photograph of a construction site. In the foreground, a yellow tracked loader with the number 28903 and 'valley' branding is positioned on a concrete slab. Two workers in high-visibility vests and hard hats are standing near the loader. In the background, another worker is visible near a pile of dirt. A yellow caution tape with the word 'VALLEY' is strung across the scene. The scene is set outdoors with trees and utility poles in the background.

# PROPOSED PROJECTS

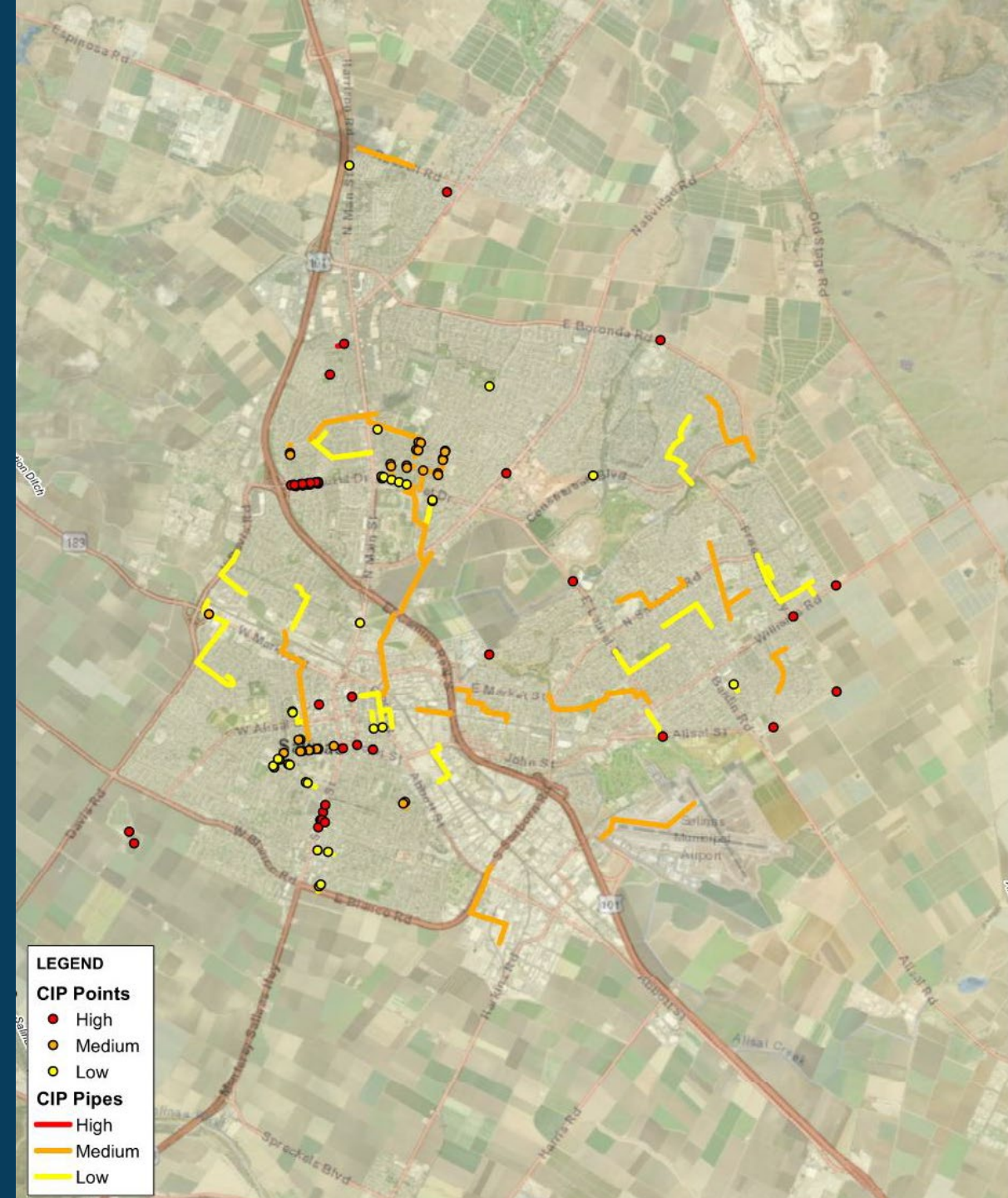




# Proposed Projects

## Project Rankings

- High Priority
- Medium Priority
- Low Priority
- Maintenance





## High Priority Projects

- 18 Projects
- Known Problem Areas
- Sediment Removal
- New Inlets
- Focused Studies
- 12+ Million



### CIP 1-1: John St & Monterey St

City of Salinas Capital Improvement Project Information Sheet

2024 Stormwater Master Plan Update

#### Project Trigger

- ☒ Existing Condition
- ☐ Future Condition

#### Project Components

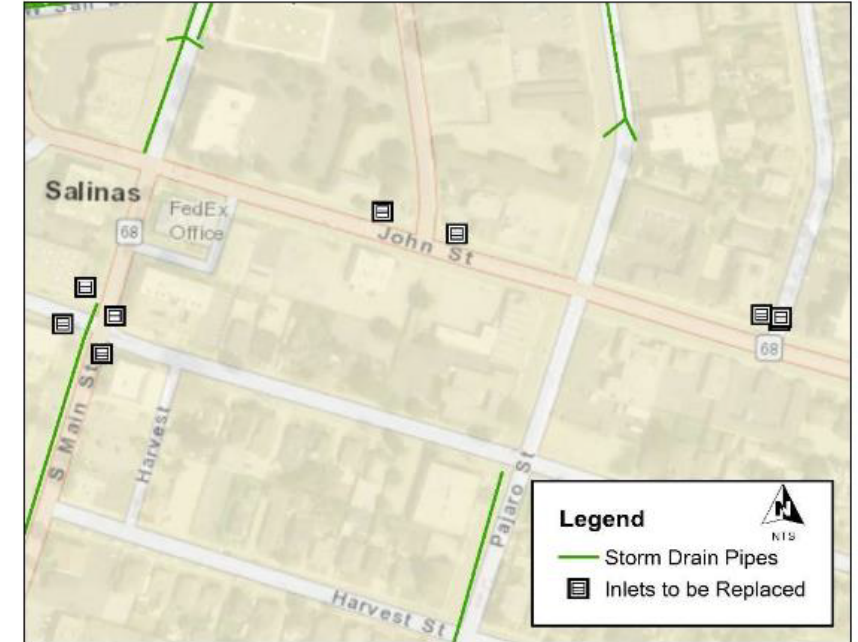
- ☐ Upgrade Gravity Pipeline
- ☐ New Gravity Pipeline
- ☒ New Curb Inlet(s)
- ☐ Sediment Removal
- ☐ Detention Facility
- ☐ Inspection and/or study
- ☐ New Barrier

#### Project Need

- ☒ Existing surface flooding
- ☒ Public Safety Concern
- ☐ Sediment and/or debris

#### DAC Area

- ☒ Yes
- ☐ No



#### Project Cost Breakdown

Construction Cost <sup>1</sup>	\$680,000
Planning, Engineering, CM, Legal/Admin (40%/80%) <sup>2</sup>	\$280,000
<b>Total Project Cost</b>	<b>\$960,000</b>

#### Project Description

Various inlets throughout the City are undersized and contribute to flooding. Replace nine undersized inlets at the following locations:

- The intersection of South Main Street and Winham Street/Clay Street: 4 inlets
- The intersection of John Street and Monterey Street: 2 inlets
- The intersection of John Street and Soledad Street: 3 inlets





## Medium Priority Projects

- 22 Projects
- Pipe Upgrades
- New Inlets
- \$200+ Million

## Low Priority Projects

- 23 Projects
- Pipe Upgrades
- New Inlets
- \$100+ Million







# RISK AND IMPACTS





# Health and Safety





# Health and Safety



Photo Credits:

<https://www.ksbw.com/article/road-closed-outside-salinas-flooding-california>

<https://salinasvalleytribune.com/winter-storm-triggers-evacuations-flooding-in-salinas-valley/>

<https://www.cityofsalinas.org/Your-Government/Departments/Salinas-Fire-Department>



Wallace Group | DEDICATION TO SERVICE

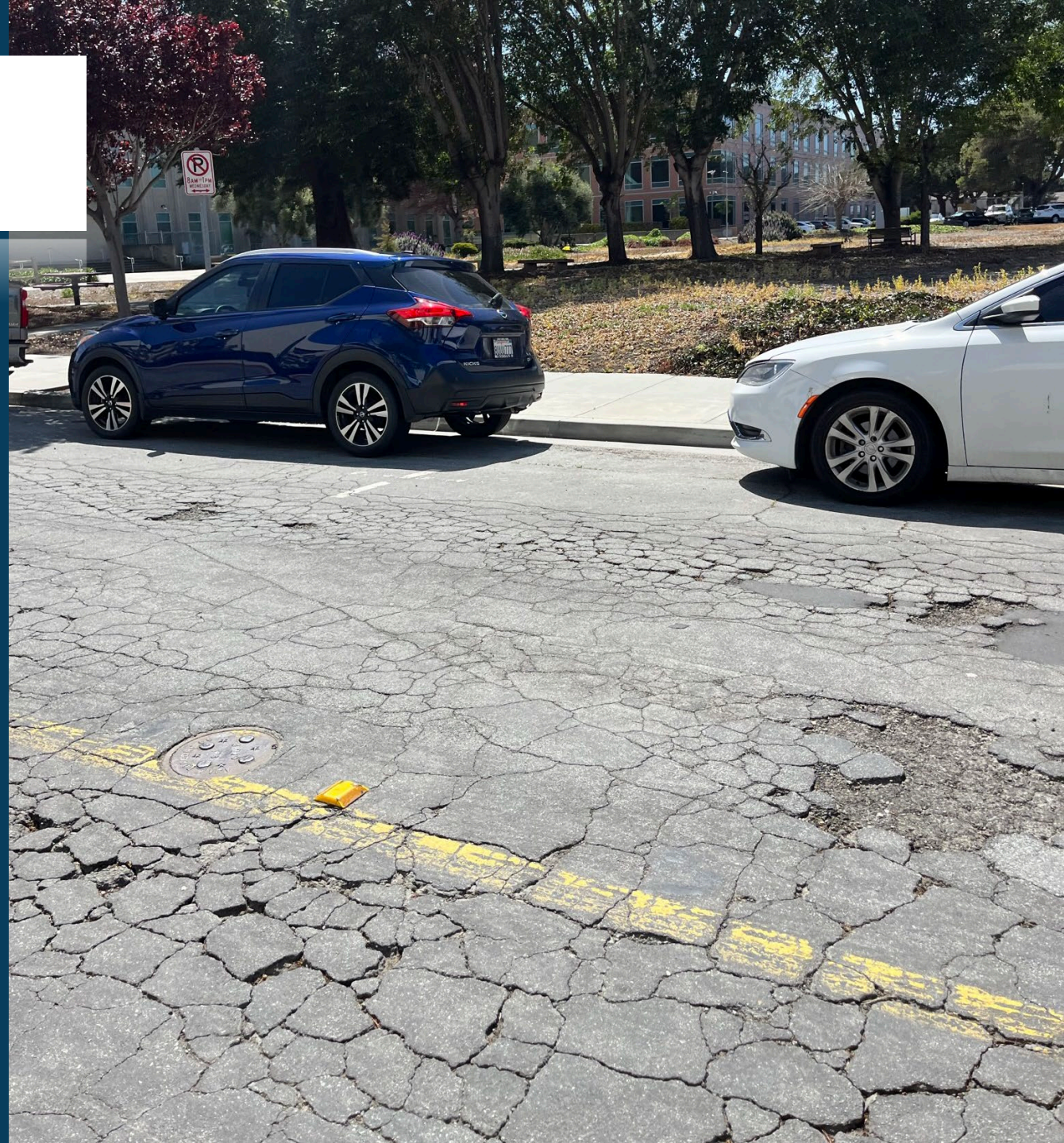


# Property Damage





# Pavement Damage





# Sinkholes





# Deferred Maintenance Can Contribute to Flooding







# FUNDING



Wallace Group | DEDICATION TO SERVICE

Photo Credit: <https://www.thecalifornian.com/story/news/local/2024/10/22/california-water-infrastructure-improvements-new-wells-underway-in-salinas>



# Business as Usual

## Service rate:

Minimal proactive repairs and no proactive replacement of assets

## Costs:

Cost is \$101M over 20 years with no funding gap

## Risk:

After 20 years, 1/3 of City assets will be at very high risk of failure (currently 1/10)



# Proposed Service Rate Increase:

## **Service rate:**

Proactively  
replace riskiest  
assets, and  
increase  
maintenance and  
repairs of others

## **Costs:**

Cost is \$237M  
over 20 years,  
requiring  
additional  
revenue of  
\$6.5M/year

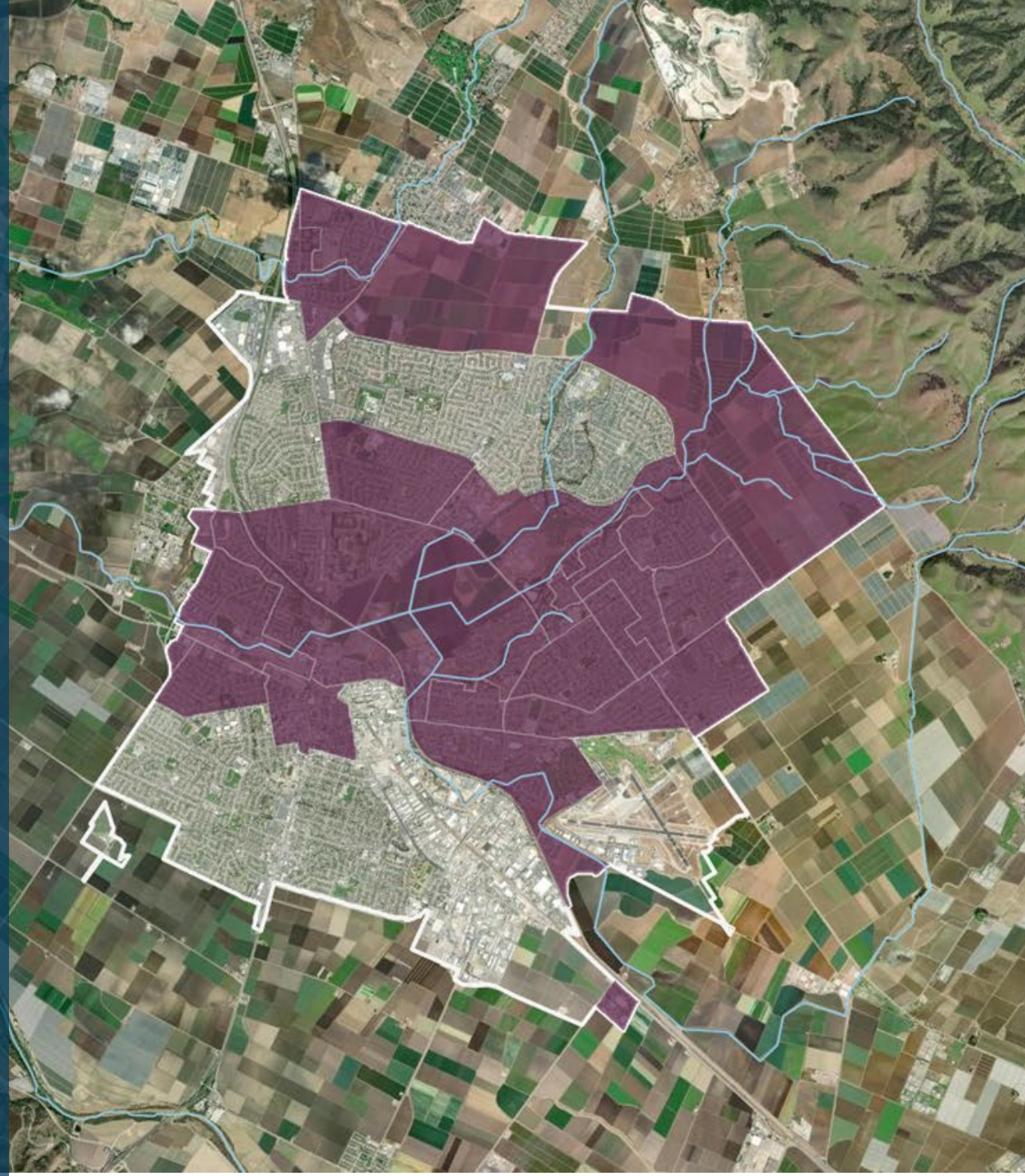
## **Risk:**

After 20 years, no  
City assets will be  
at very high risk of  
failure (currently  
1/10)



# Recent Funding Opportunities Explored

- CBP3 2021- Great opportunity; Leadership change and lack of SW utility
- Urban Greening Grant 2022 - Green street project at DAC Park; didn't want multi-benefit
- NOAA Climate Resilience Challenge - Looking for regional partnership; not "coastal" enough
- CW SRF - Principal forgiveness stormwater add-on to currently funded corridor project; Timing challenges
- FEMA FMA - Lack of disaster insurance loss claims







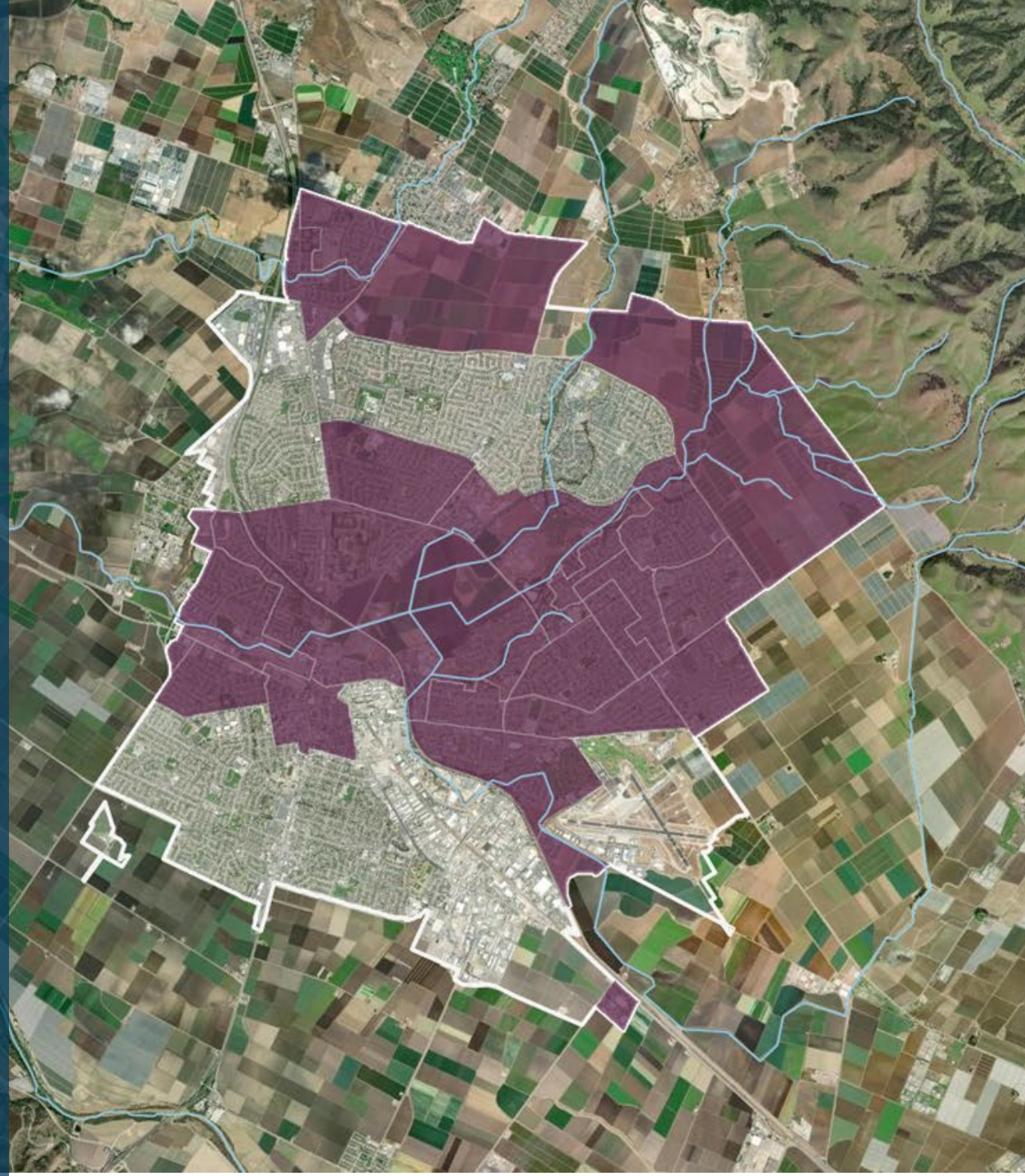
# CONCLUSION





# Salinas Strategy

- Data is Power: Map, attribute and model stormwater system
- Focus on multi-benefit project concepts in DAC areas
- Educate and engage city leadership and peers on the value of better managed stormwater
- Research and understand funding opportunities and challenges
- Work towards a stormwater utility fee







# Questions?



WALLACE GROUP®

Photo Credit: <https://salinascitycenter.com/>