

Vision and Thematic Narrative The proposed "Kaleidoscope of Life" is a dynamic, monumental sculptural group that serves as a vibrant gateway and a visual poem to the community's evolving identity. At the core of this design is the motif of the kaleidoscope, represented through the brilliantly colored, overlapping circular panels. A kaleidoscope inherently relies on an array of distinct, individual pieces coming together to create a unified, beautiful whole. Here, it symbolizes the rich cultural diversity of the Salinas community, as well as the continuous, fluid nature of its change.

Just as a kaleidoscope requires the active turn of a hand to shift its pieces into a new picture, "Kaleidoscope of Life" represents the profound power of action. It serves as a reminder that both the individual and the community as a whole possess the agency to change their circumstances for the better. This concept gently echoes the literary heritage of the region, specifically John Steinbeck's *East of Eden* and its central philosophy of *Timshel* ("thou mayest"). It is a subtle but powerful sub-context reminding viewers that everyone holds the power of choice to consciously shape their own pathway into the future.

The Central Focal Point: The California Scrub Jay Rising from the center of the kaleidoscopic medallions is the sculptural focal point of the monument: the California Scrub Jay. A familiar and deeply rooted local species, the Scrub Jay was selected for its remarkable intelligence and adaptability observed in nature. The bird is captured in a dynamic pose, actively taking flight with its wings fully spread. This upward, kinetic movement represents an uplifting spirit of optimism and a collective motion toward a brighter future. Furthermore, this soaring gesture creates a direct geographical and thematic connection to the nearby municipal airport, celebrating the region's connection to flight and progress.

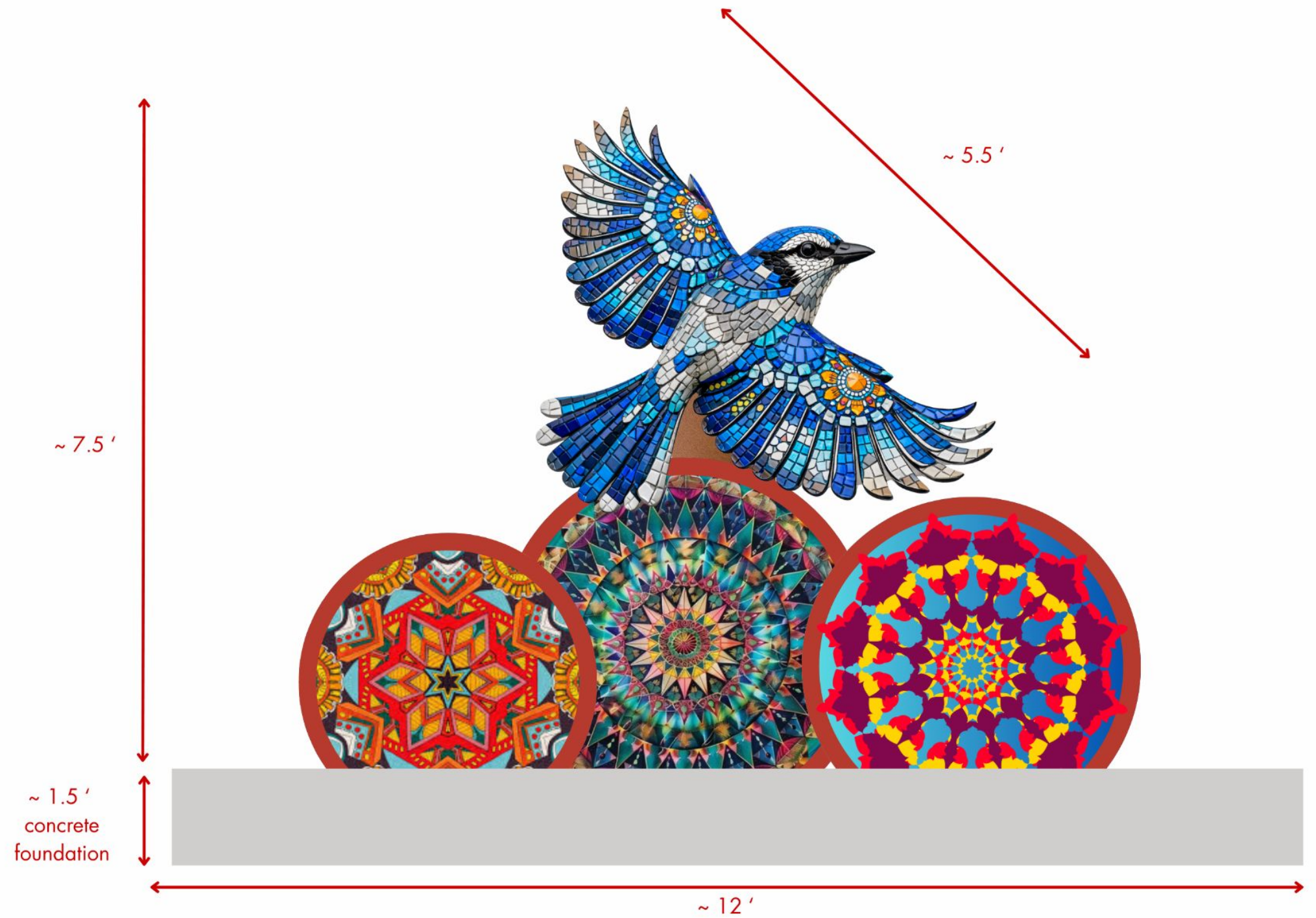


Aesthetic Approach and Visual Impact Style-wise, the entire sculptural group is designed with a bold and eclectic approach. The vividly colored mosaic circular panels intentionally incorporate geometric patterns and motifs inspired by the traditional crafts of the region's indigenous people. These ancestral patterns are woven together with bold, vibrant colors that represent the many distinct cultures, social groups, and generations that make up the fabric of Salinas today.

As a roundabout centerpiece, the artwork is engineered to be highly visible and engaging from 360 degrees, reading clearly to both passing vehicular traffic and pedestrians. During the day, the highly textured, custom mosaic finishes will catch the brilliant California sunlight, highlighting the intricate craftsmanship and natural beauty of the Scrub Jay. As the sun sets, the monument transforms. The nighttime view of the sculpture features strategic illumination that allows the kaleidoscopic panels to glow vibrantly against the dark sky, ensuring the monument remains a continuous, guiding beacon of hope, diversity, and community resilience around the clock.

Maintenance Statement

- The artwork is fabricated using high-quality thick glass, grout, and durable materials designed to last for a minimum of 30 years.
- Surfaces can be cleaned with standard cleaning solutions, including for stain or graffiti removal.
- In the event of unforeseen damage, please contact us directly to arrange an inspection and receive an estimate for repairs.
- For minor issues such as a few missing tiles, we are happy to provide replacement materials free of charge.





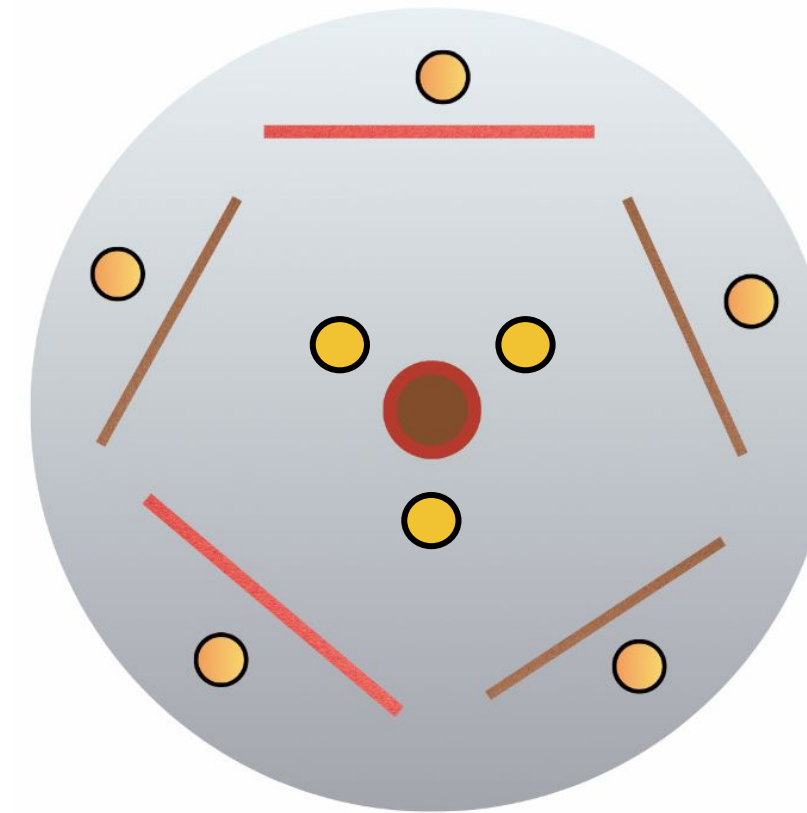
Day time View



Proposed design concept is envisioned to have minimal interference with the existing landscape, and will benefit from the addition of the boulders and low-maintenance plants around the existing ones.

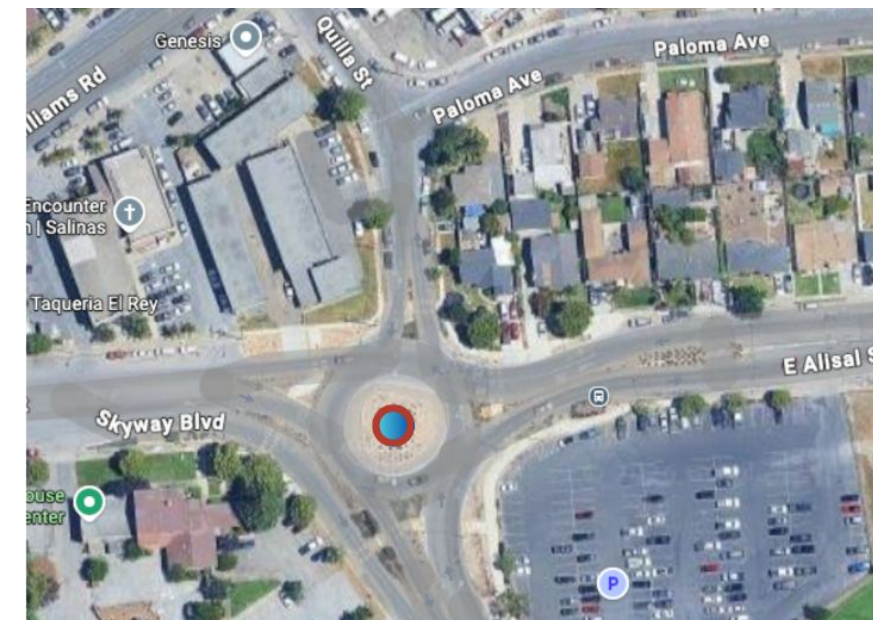
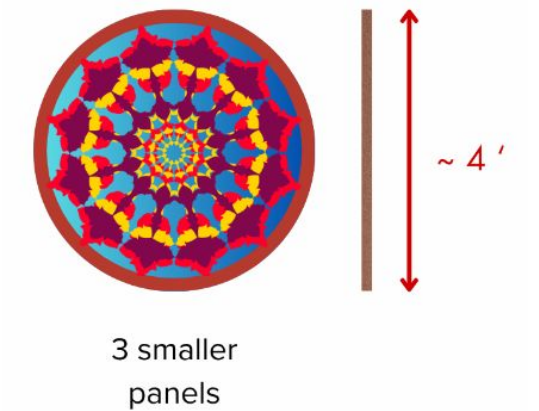
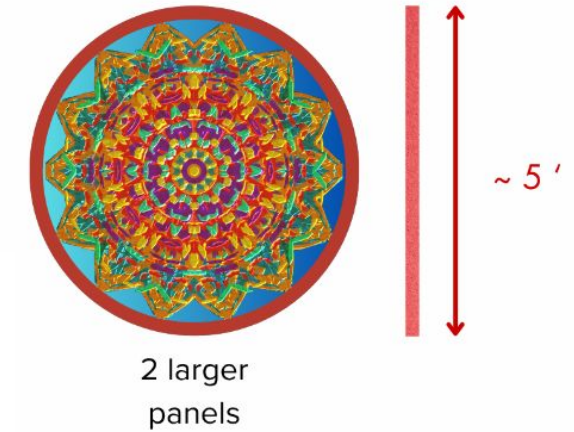


Night time View

Vivid colors of the mosaics will stand out with the help of simple uplight fixtures installed, accounting for the drivers safety.



-  Central steel column holding the Bird sculpture will be anchored to the concrete foundation
-  Preliminary placement of the uplight fixtures
- ~ 12' concrete foundation



Monument Placement per Attachment A- Aligned in the center of the existing roundabout space



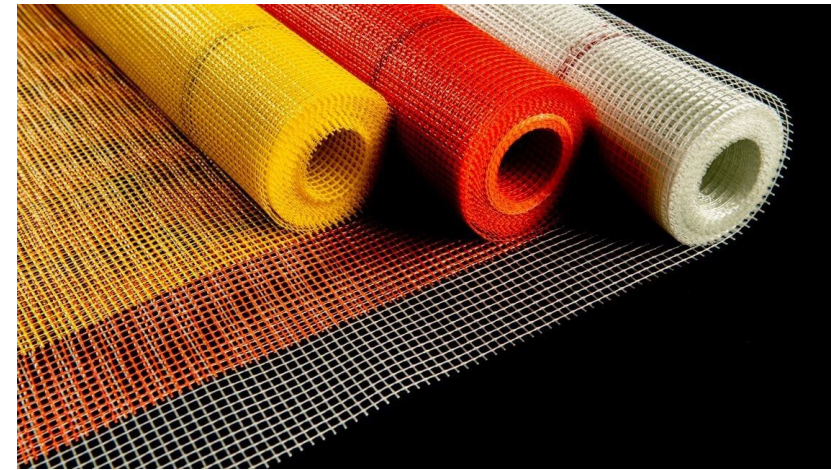
Mosaic Example in Detail: thick glass, dichroic glass, colored mirror & various mosaic materials.



Steel talons and kaleidoscope panels frames: welded steel armature & laser-cut corten steel panels covered with durable rust-looking patina

Sculpting technique & materials for the Jay Bird Sculpture:

High-density architectural foam, reinforced with layers of fiberglass mesh and concrete - allows for stable and strong substrate, perfect to hold the mosaic finish.



2. Fiberglass mesh reinforcement (several layers)



1. Sculpted Architectural Foam



3. Sculpting concrete mix application (several layers)



***All specs and detailed product data will be provided at the final design stage, to be reviewed and approved by the structural engineer.

STUDIO BIO

Since the founding of our studio in 2002, we've grown into a strong, well-coordinated team of 14 artists, working seamlessly between the two facilities in San Diego and Chico in Northern California. For over 20 years, our team has been working with government agencies, community organizations, architects and contractors, listening carefully to input from all parties. Our portfolio includes a diverse range of projects, from welcome signs to large-scale mosaic murals and interactive sculptures. Our mission is to not only beautify the space, but to create artworks that also serve as catalysts for social connection and dialogue.

**** Please see our detailed resume attached as an Appendix*

*Leanna Lunsford-
Mosaic Artist & Community
Engagement Director*



Joann Laoretti - Mosaic Artist

*Dan Evers
Founder & CEO - leads project visioning*



*Maria Titova
Lead Artist and Executive
Director - research and design
integration, along with
contracting and documentation.*

*Luis Mojica
Guerrero
Artist & Fabrication Lead -
handles metalwork, structural
quality, and installation
logistics.*



*Chloe Evers
Mosaic Artist & Sculptor*



ARTIST STATEMENT

Farallon Design is a creative studio specializing in vibrant, site-specific public art. We specialize in mosaics, both two- and three-dimensional, with a unique ability to integrate structural elements to create works that celebrate nature, culture, and history. From concept to installation, our team of artists, designers, and coordinators delivers engaging, durable artworks that transform public spaces. Together with the *Rainforest Art Project* - our educational and community outreach program - we bring mosaics and sculptural works to life by blending professional design with hands-on participation. This synergy ensures each piece reflects both expert craftsmanship and meaningful local collaboration.



*Feather River Art Wall -
Table Mountain Blvd., Oroville, CA*

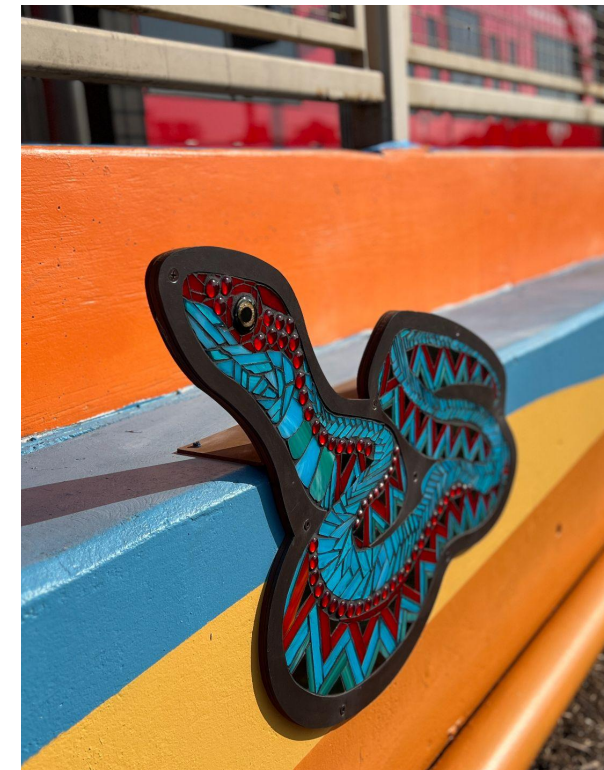
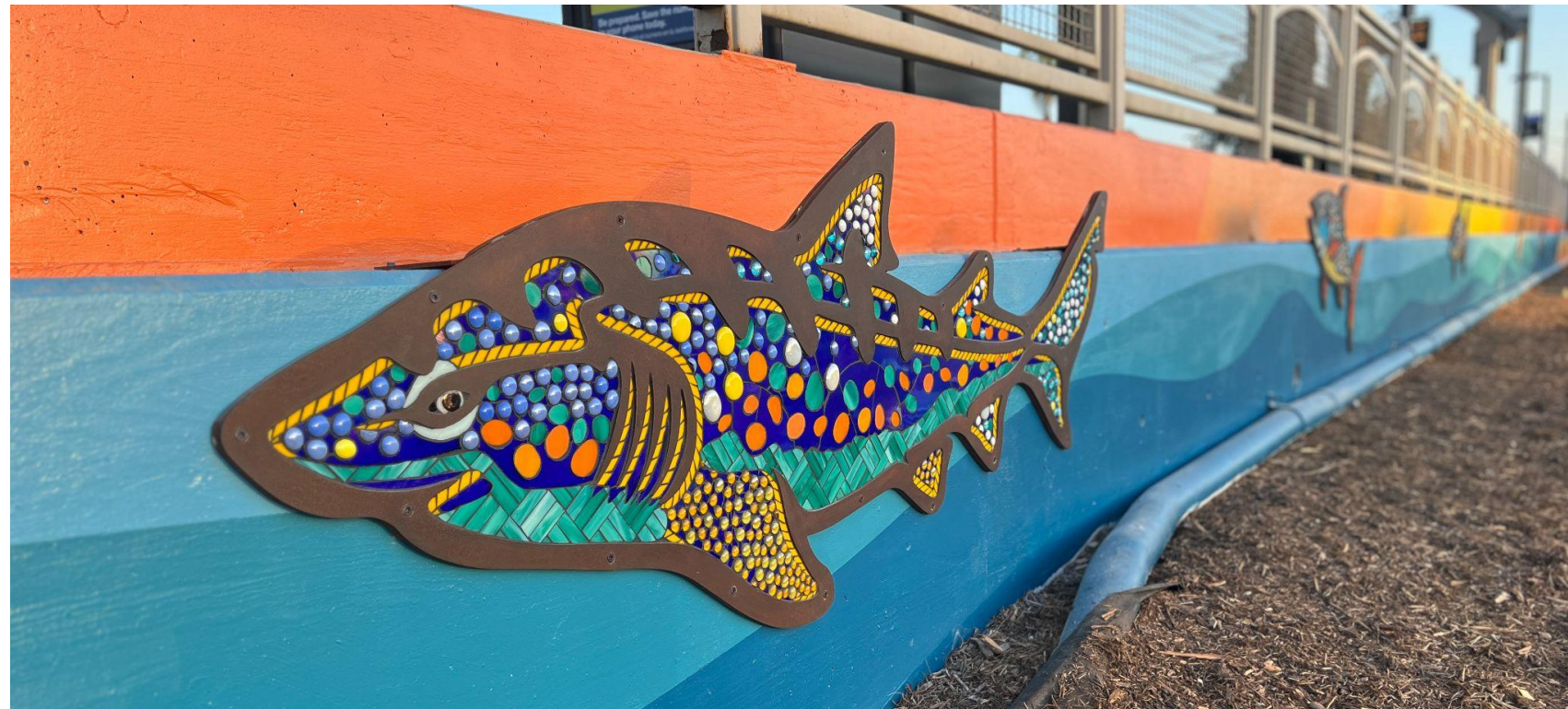
- ❖ **Commissioning Agency:** City of Oroville
- ❖ **Timeline:** 2022 – 2025
- ❖ **Budget:** \$450,000
- ❖ **Medium:** Cement backing board, variety of mosaic materials, thick glass tesserae
- ❖ **Dimensions:** 60 panels, each approx. 80" x 16"
- ❖ **Description:** At over six-hundred feet long, and featuring sixty murals, this is an extraordinary and lasting tribute to the majestic Feather River, the City of Oroville, and to communities throughout the watershed. A large-scale community and youth-driven mosaic mural. Required coordination with city planning, phased installation, and collaborative work with over 2,000 participants including students and youth groups.



*Mariposa Pathway Sculptures -
Park Avenue, Chico, CA*

- ❖ **Commissioning Agency:** City of Chico, part of Caltrans Clean California Grant
- ❖ **Project Timeline:** January, 2025 - February, 2026 (Project is completed, waiting for install)
- ❖ **Project Cost:** \$350,000
- ❖ **Medium and Dimensions:** Steel, laser-cut aluminum, thick glass mosaic, and durable patinas; Six sculptures, each approximately 10 ft - 18 ft tall.
- ❖ **Description:** Designed for a prominent, high-traffic roadway entrance into the city. Our role was to engineer highly visible, dynamic vertical forms that ensure immediate visual recognition for drive-by audiences. The motifs feature tall, arching sprouts carrying three-dimensional mosaiced butterfly sculptures, acting as brilliant symbols of transformation, hope, and highlighting the vital ecological role of pollinators for the agricultural region around Chico. Strong silhouettes create a memorable sense of place and inject a vibrant sense of vitality into the commuter corridor, all while ensuring the artwork reads clearly at multiple speeds.





Treasures of the Bay -
E Street Transit Center, San Diego, CA

- ❖ **Commissioning Agency:** San Diego Metropolitan Transit System
- ❖ **Project timeline:** October 2024 - December 2024
- ❖ **Project cost:** \$407,000
- ❖ **Medium:** Mosaic panels created with laser-cut corten steel outlines, cement board, custom stained glass mosaic tiles & patinas; installed onto the platform wall with painted background
- ❖ **Dimensions:** 325 ft long x 3 ft tall, 18 mosaic & steel panels
- ❖ **Description:** Celebrating the ecosystems of the South Bay, this expansive 325-foot transit installation connects travelers to the nearby Living Coast Discovery Center. The motifs blend native marine wildlife with rust-patina steel elements reminiscent of Kumeyaay ceramics and basket-weaving. Our role was to craft a sweeping visual narrative that transforms a mundane transit platform into a culturally and ecologically resonant gateway for commuters.

