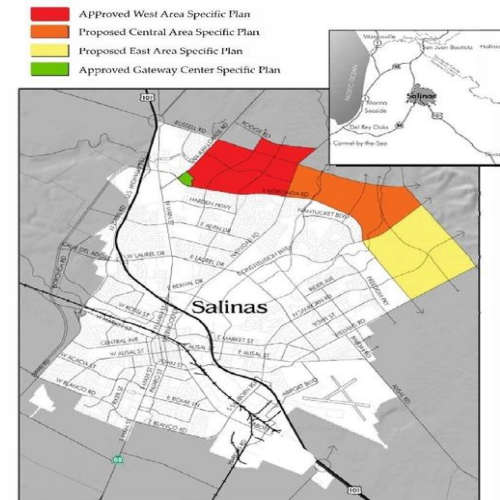
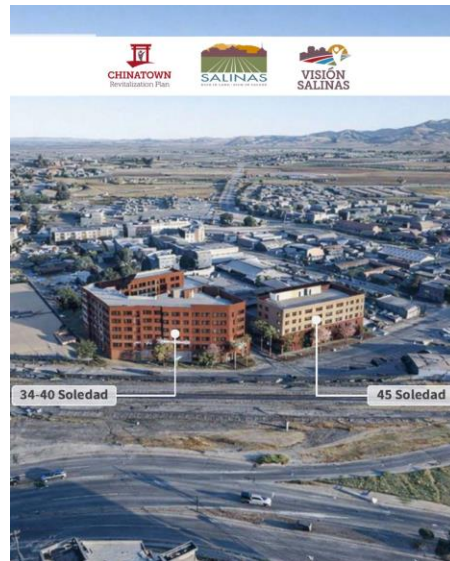




# CITY SNAPSHOT





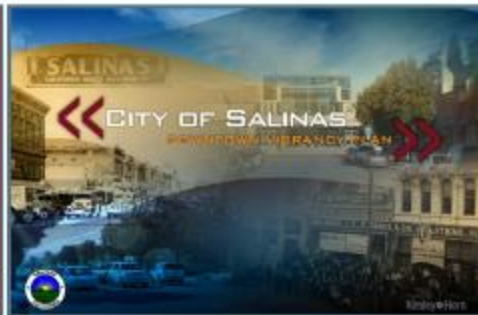
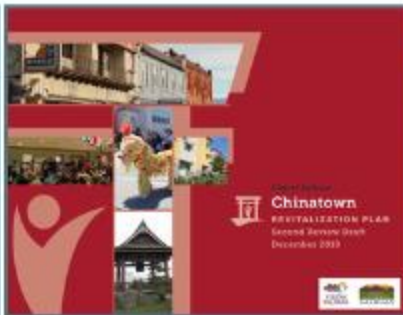
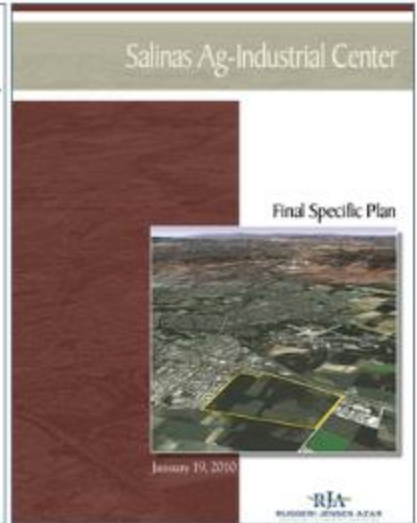
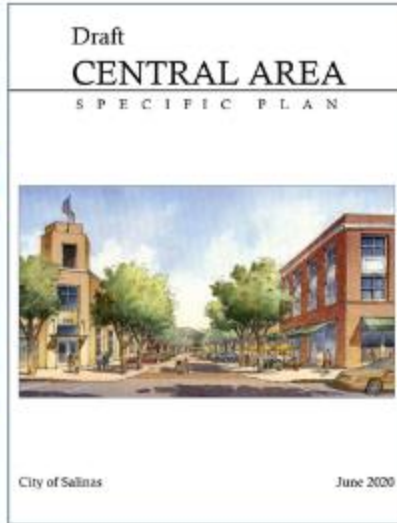
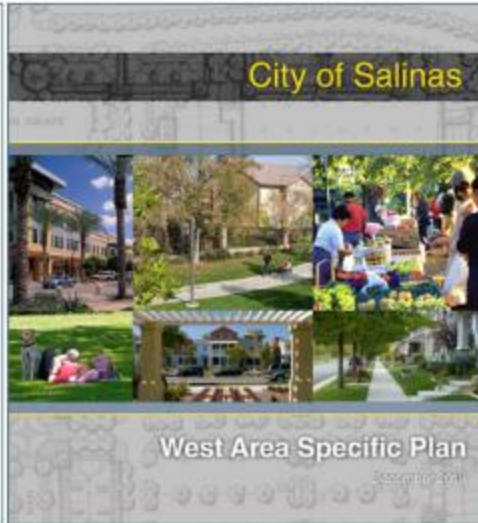
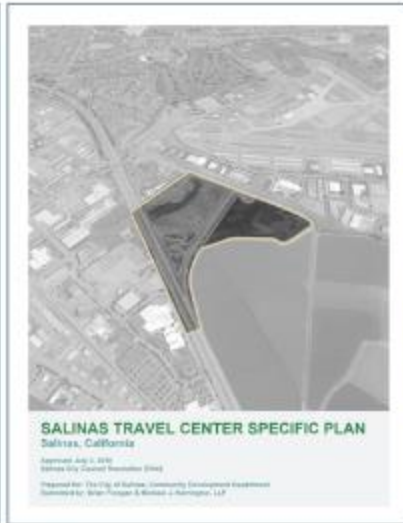
# INVESTMENT IN OUR FUTURE



# VISIÓN SALINAS

2040

The General Plan is a Blueprint for the City setting overarching goals. Specific Plans support implementation of these goals.





## First comprehensive General Plan Update since 2002

State law requirement

Constitution for local planning

Identifies community issues

Provides a long-range vision (20-30 years)



LAND USE



CIRCULATION



HOUSING



CONSERVATION



NOISE



OPEN SPACE



SAFETY

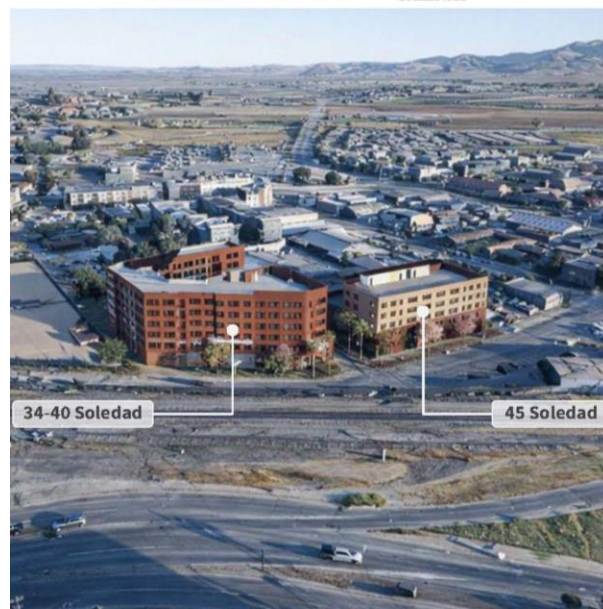


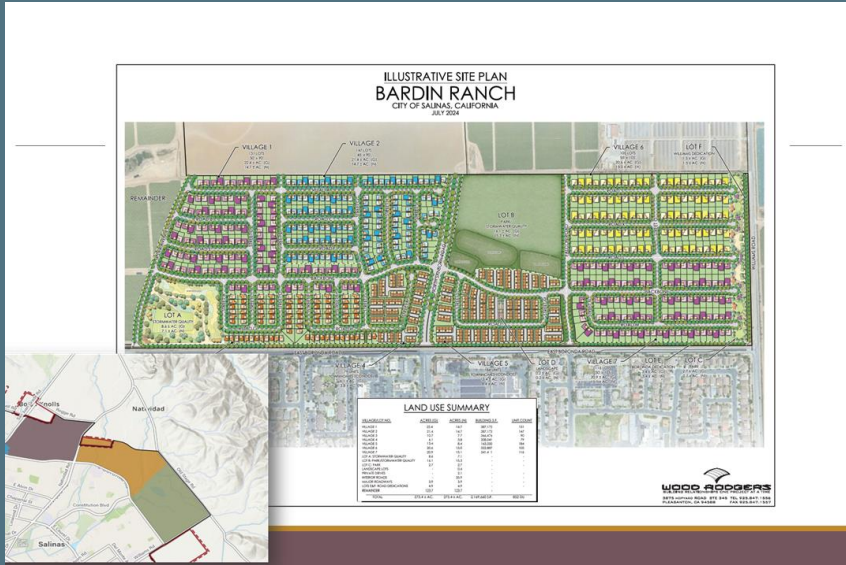
ENVIRONMENTAL JUSTICE



# CREATING HOUSING OPPORTUNITIES

- Facilitate housing development:
- Fairview Grand Opening
- 1<sup>st</sup> Annual Housing Summit
- Chinatown Redevelopment
- Future Growth Area
  - West Area Specific Plan
  - Central Area Specific Plan
  - East Area Specific Plan



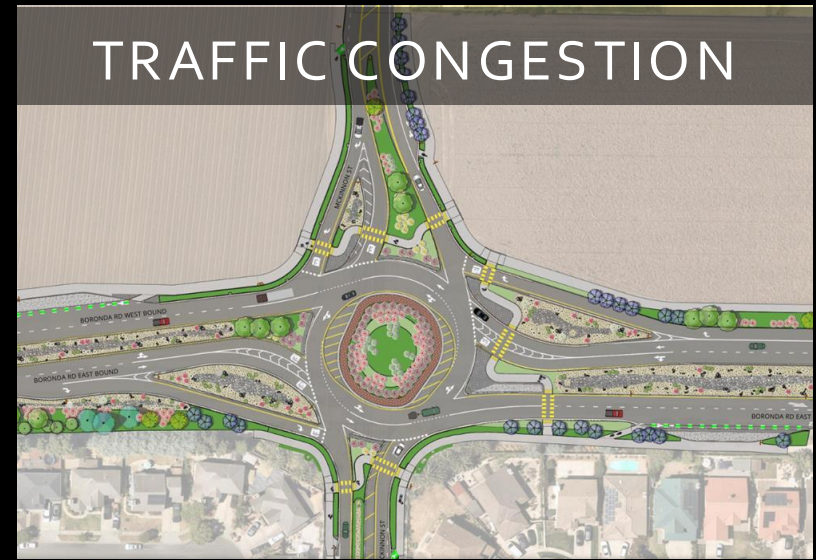




WASTEWATER



SIDEWALKS



TRAFFIC CONGESTION

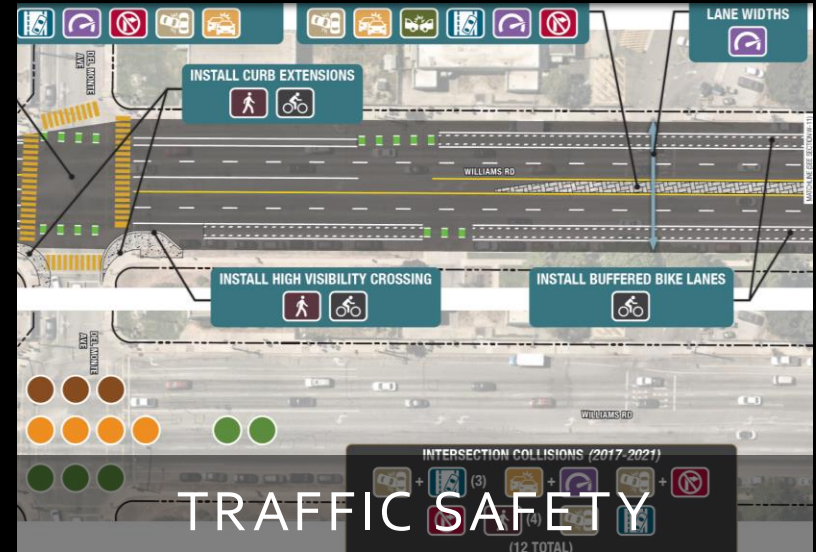
# INVESTMENT IN ROADS, SIDEWALKS & ESSENTIAL INFRASTRUCTURE



SAFE ROUTES TO SCHOOL



TRAFFIC CALMING



TRAFFIC SAFETY



# COLLECTIVE ACTION FOR INNOVATION & OPPORTUNITY

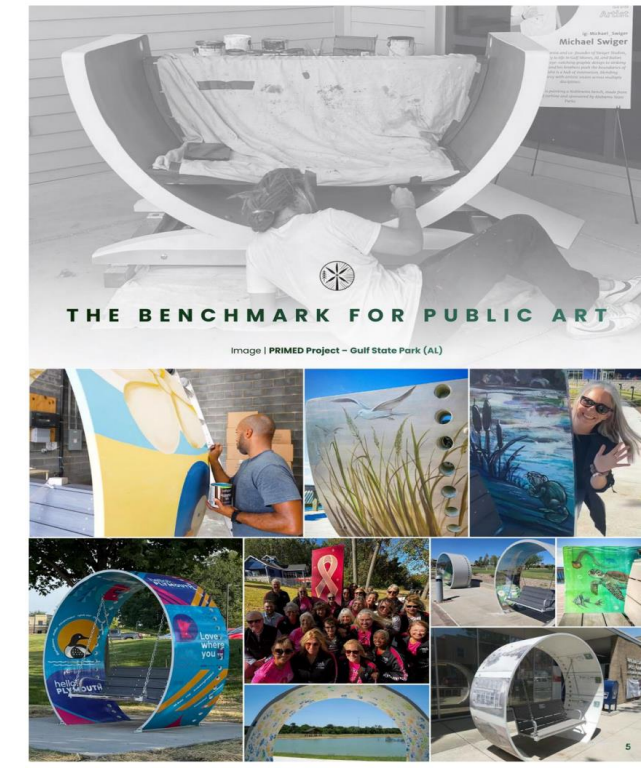


## MODERNIZING POLICES & PROCESSES TO SUPPORT FUTURE DEVELOPMENT

- Streamline development processes that align with community preferences
- Create a Zoning Code that is user-friendly for the public and staff

# INVESTING IN PUBLIC SAFETY & QUALITY OF LIFE





# PUBLIC SPACES



STATION IMPROVEMENTS &  
PLANNING FOR STATION 7



# FACILITIES



BIG PICTURE:  
FUTURE GROWTH



COMMUNITY:  
FINANCIAL  
EMPOWERMENT



BUSINESSES:  
LOCAL BUSINESS  
SUPPORT



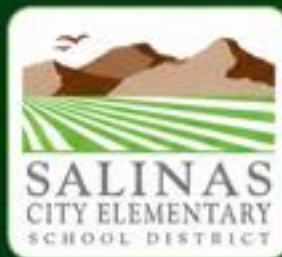
PEOPLE:  
WORKFORCE  
DEVELOPMENT

# EXPANDING ECONOMIC OPPORTUNITY ACROSS SALINAS

# Thrive Now and In the *Future*

Salinas City Elementary  
School District

City of Salinas



**May 5, 2026**

Joint meeting of the  
SCESD Board of Trustees  
and the City of Salinas

# WHO WE ARE

---



**15**  
Schools



**8,610**  
Students



Preschool  
through  
Grade 6



**7**  
Dual Immersion  
Schools



**1,200** Employees

---

# OUR BUDGET. OUR PRIORITIES.

Responsible funding.  
Focused on student success.



**\$114,132,082**

### Local Control Funding Formula

State funding based on student needs to support our schools.



**\$14,364,632**

### Federal Revenue

Supports targeted programs and services for students.



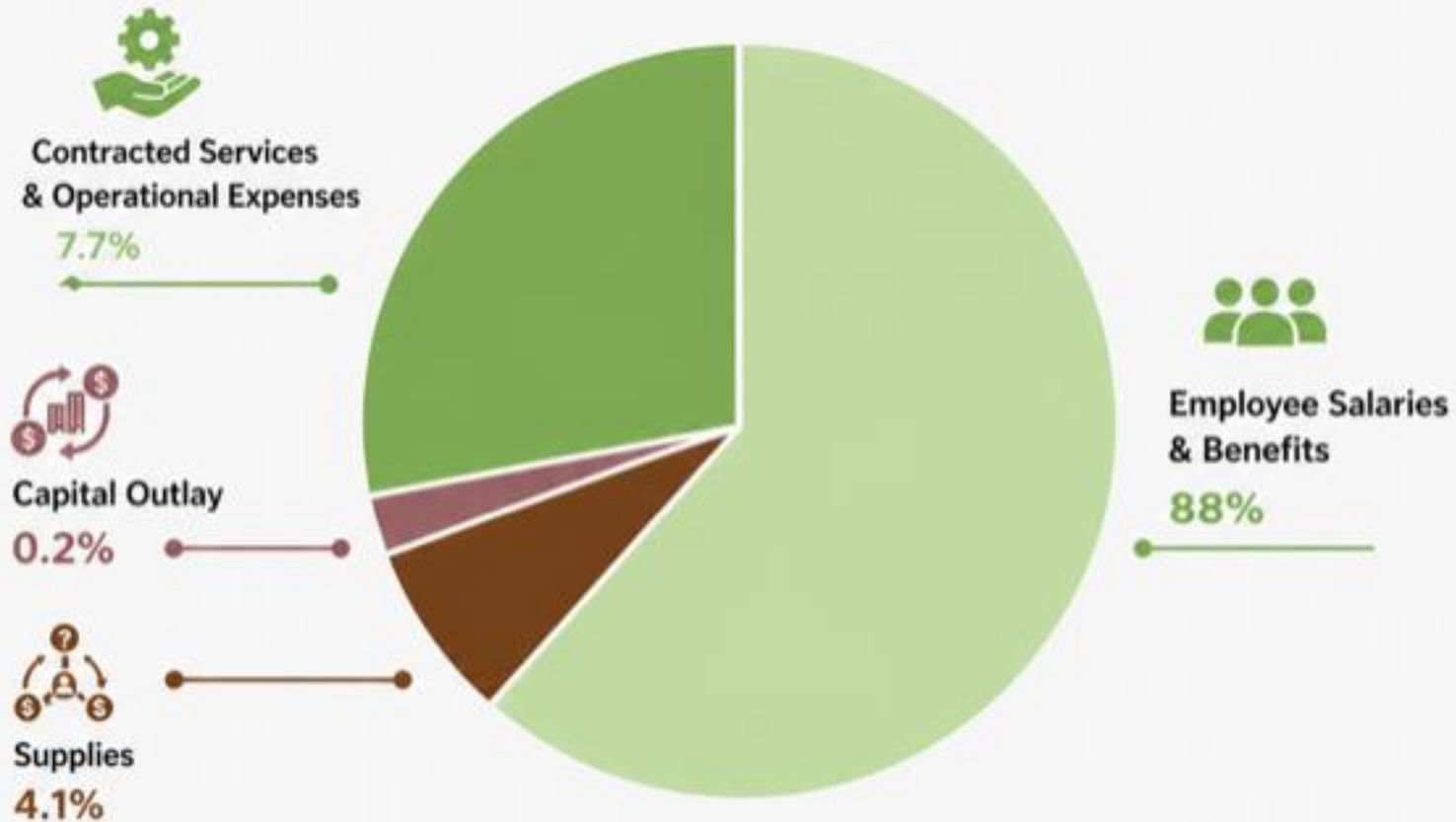
**\$55,898,740**

### Other State & Local Revenue

Additional funding for programs and initiatives that strengthen student learning.

## ALLOCATION OF FISCAL RESOURCES

Careful stewardship. Maximum impact.



Based on the District's Second Interim Report for 2025-2026 to MCOE

# OUR COMMITMENT

## THE 5-3-5 PROMISE

5

Math  
by Grade 5



All students will be proficient in math by the end of Grade 5.

3

Reading  
by Grade 3



All students will be proficient in reading by the end of Grade 3.

5

English Learner  
Reclassification  
by Year 5 in the Country



All English Learners will be reclassified as proficient in English by year 5 in the country.



Building a foundation.  
Empowering every student.

# ADVANCED LEARNING

---

CHALLENGING AND INSPIRING  
EVERY STUDENT

- Districtwide screening (NNAT)
- Focus on problem-solving and reasoning
- Expanded enrichment opportunities



# DUAL IMMERSION

BILINGUAL. BILITERATE. BOUNDLESS.



## 7 Dual Immersion Schools

Spanish-English programs from transitional kindergarten through 8th grade.



## Expanding to Middle School (Exploration Phase)

Growing our programs to support more students on their bilingual journey.



## Recognized Excellence (CABE Award)

Honored for our commitment to bilingual education.



# COMMUNITY SCHOOLS

## SCHOOLS AS COMMUNITY HUBS



### 9 Community School Sites

Schools that connect students, families, and resources.



### Wraparound Supports for Families

Providing services that support health, well-being, and success.



### Partnerships with Local Organizations

Working together to strengthen our community.



### Telehealth and Counseling at Every School

Accessible mental and physical health support for every student.



Stronger together.  
Better for every student.



# STUDENT VOICE

## LEADERS TODAY, CHANGEMAKERS TOMORROW



### Superintendent's Student Advisory Board

Students help guide decisions that shape our schools.



### Student Panels at Family Leadership Conference and Other District Events

Students share ideas and perspectives that help strengthen our schools and community.



### Portrait of a Learner Development Team

Designing the competencies needed to succeed not just in school but college, career and life.



### Student Film Festival

Amplifying student voices through storytelling and creativity.



# COMMUNITY VOICE IN ACTION

# COMMITTEES



DELAC &  
DMAC



Wellness  
Committee



Fiscal Health  
Committee



Bond Oversight  
Committee



Arts  
Committee



Collaborative Alliance  
of Labor and  
Management (CALM)



Parent Advisory  
Committee



# BOND PROJECTS: AN INVESTMENT IN OUR FUTURE

## MEASURES G & H



Approved by voters  
in 2022

**\$149.5 MILLION**

to fund school  
facility projects



Investing in safer,  
modern learning  
environments



Upgrades include  
playgrounds, portables,  
kitchens/MPRs, roofs,  
building improvements  
and more



Designs are in progress and projects are moving forward. Construction is expected to begin **Spring/Summer 2027**.



**SALINAS**  
CITY ELEMENTARY SCHOOL DISTRICT



## FACILITIES NEEDS

Scan the QR code to view a complete list of the District's facilities needs by school.



# CITY & DISTRICT PARTNERSHIP

- ✓ **City Staff** serve on District leadership committees
- ✓ **Collaboration** on Community Schools and Portrait of a Learner
- ✓ **Firefighters & Police** support school and student events
- ✓ **City** provides workshops and resources for families



# OUR PROMISE. OUR FUTURE.



Together, we create opportunities today that empower every student to thrive tomorrow.

## WAYS TO STRENGTHEN OUR PARTNERSHIP



STAY INVOLVED



STAY CONNECTED



VOLUNTEER WITH US

