

**Nantucket Blvd &  
Independence Blvd**

**Nantucket Blvd &  
Hemingway Dr**

**Nantucket Blvd &  
Declaration St**

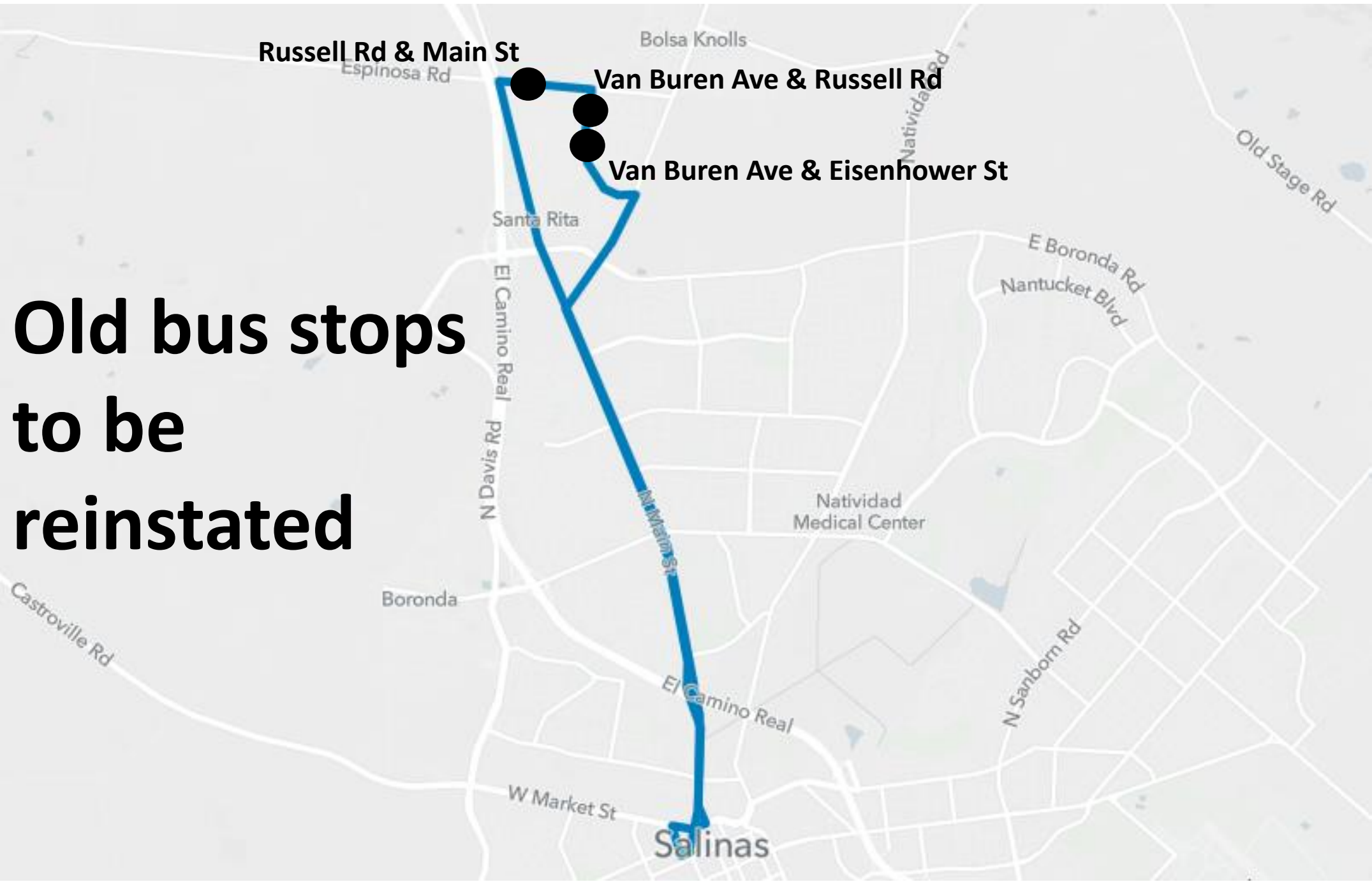
**Constitution Blvd &  
Nantucket Blvd**

**Constitution Blvd &  
Beacon Hill Drive**

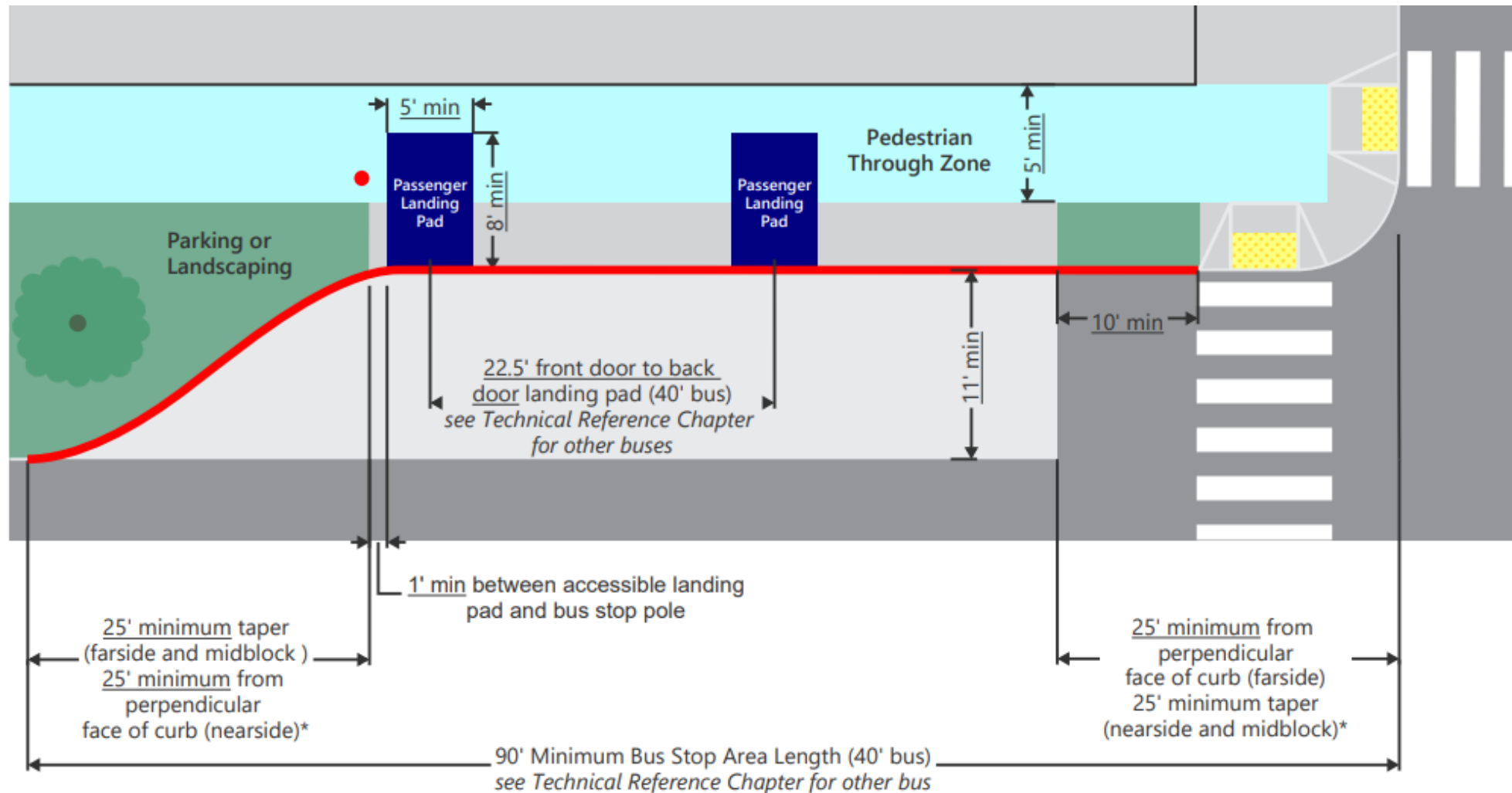
**New bus  
stops to be  
installed**



**Old bus stops  
to be  
reinstated**



**Red curb should be sufficient length to accommodate bus stop and pull out.  
MST Designing for Transit Guidelines indicates 90 feet.**



*\*Length of tapers into and out of bus stop depend on site conditions.*