



City of Salinas El Gabilan Library Improvements

Anderson Brulé Architects



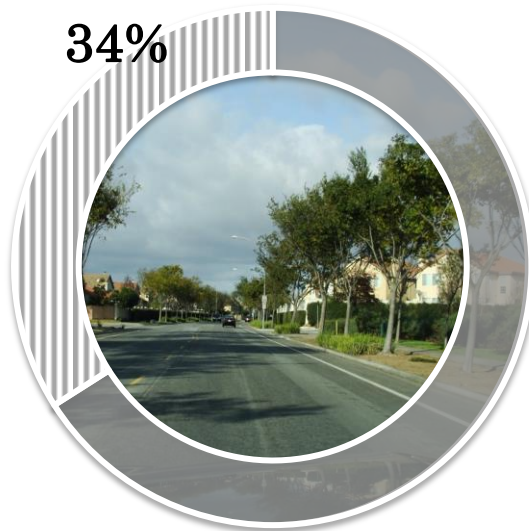
Defining Your Needs- Focus on Community

- *Children & Youth*
- *Adult*
- *Community*

Top Segments of the Neighborhood

Household Type: Married Couples

Housing: Single Family



- Multicultural, Multigenerational and Multilingual households
- Densely populated suburban neighborhoods
- Younger generations are interested in the latest technologies



- Young family Oriented neighborhood
- Busy families with growing children
- Leisure time spent on family activities such as sports and other outdoor activities



- Many foreign born hardworking people
- Many recent immigrants that don't speak English fluently which impedes in workplace advancement

What El Gabilan Can Do for the Neighborhood



CHILDREN & YOUTH SUPPORT

- Family literacy programs
- Children's programs
- Teen after school support
- Summer programs with lunch served!



ADULT SUPPORT

- Job search
- Adult education courses
- Public study hubs for adults



COMMUNITY SUPPORT

- Host neighborhood events for the community
- Courses in language skills
- Provide outdoor learning environments open to the community



Needs + What's Possible

Lead with Experience & Innovation

Library Innovations & Trends

Community Engagement

Library Innovations & Trends



- On Demand Programming
- Experiential & Hands-on (Makerspace)
- Customer Driven & Participation (Social Networking)
- Mobile Tech Replacing Fixed Tech
- Out & About (Bicycle Libraries, etc.)
- E-materials Replacing Physical Ones

Library Innovations & Trends



- Staffs with Broader Skills Base
- Cross-trained Staff, Able to Assist with Few Referrals
- Single Service Point or No Service Points

- Automated Returns & Sorting
- LEAN Work Processes
- Staff Working at Multiple Locations

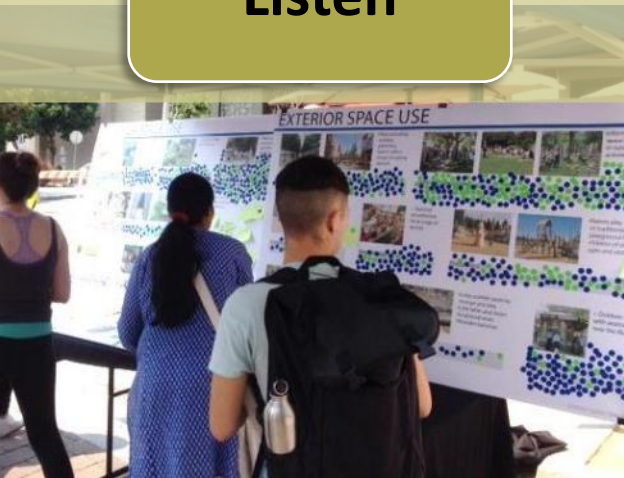
Library Innovations & Trends



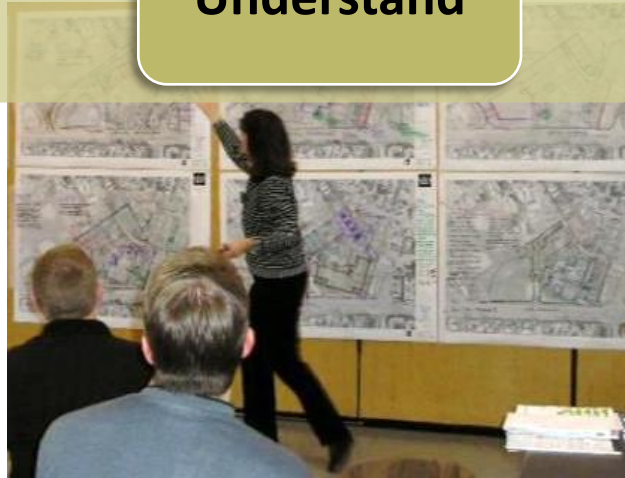
Community Engagement Tools

- Lead Facilitation
- Clear Process for Input & Decisions
- Values & Criteria
- Opportunities & Constraints
- Sharing and Gathering
- Traditional Outreach
- Next Generation Outreach
- Local Language
- Documentation Quality

Listen



Understand



Incorporate



Next Generation Engagement Tools

- Interactive Community Input
- Key Performance Indicators
- On-demand Outreach
- Gamification
- Social Media
- Pop-up Outreach
- Supplements Traditional Approach

A photograph of a man in a red jacket and a dark baseball cap riding a bicycle through a crowded street festival. He is looking towards the camera. In the background, there are many people, some wearing hats, and a yellow cart with a large straw hat on it. The scene is outdoors on a city street with buildings and trees in the background.

Meet people
where they are.

Design Approach

Incorporating Needs and Innovations

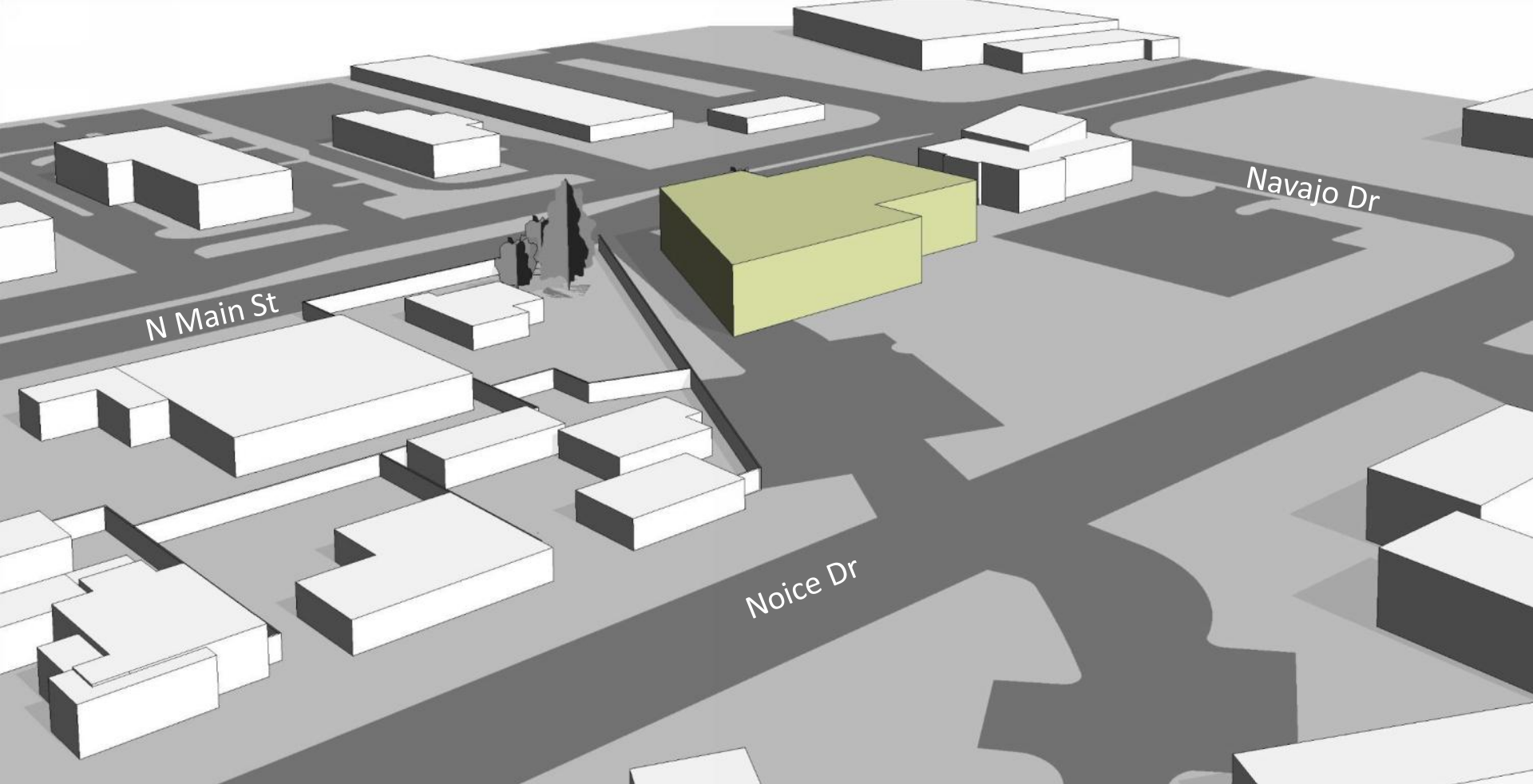
Set for Success



Design Key Issues

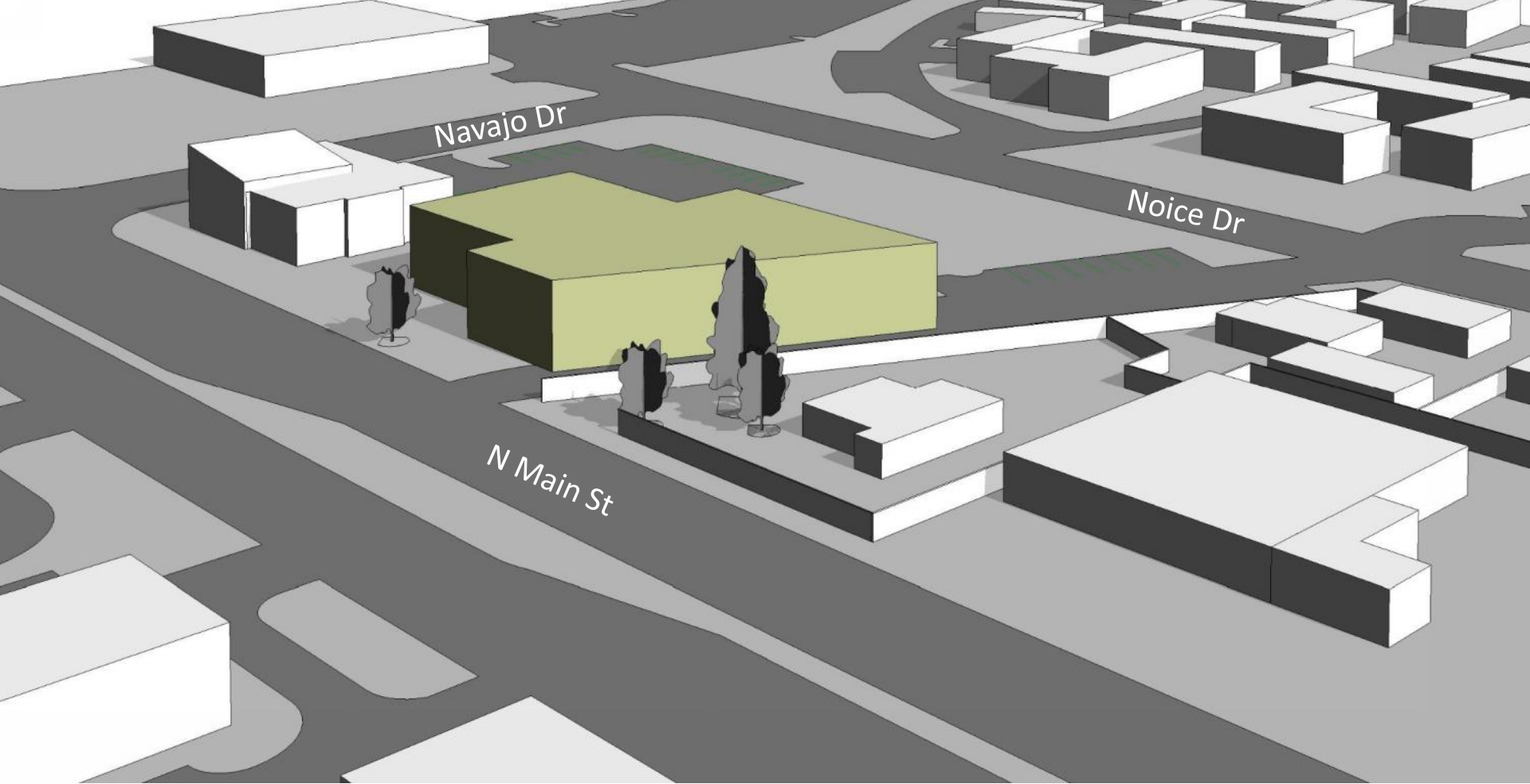
- Welcoming Identity & Civic Presence
- Access & Circulation
- Sustainability & Orientation
- Maximizing Site Capacity Context, Massing & Scale
- Shared Use & Future Flexibility
- Opportunities to Delight





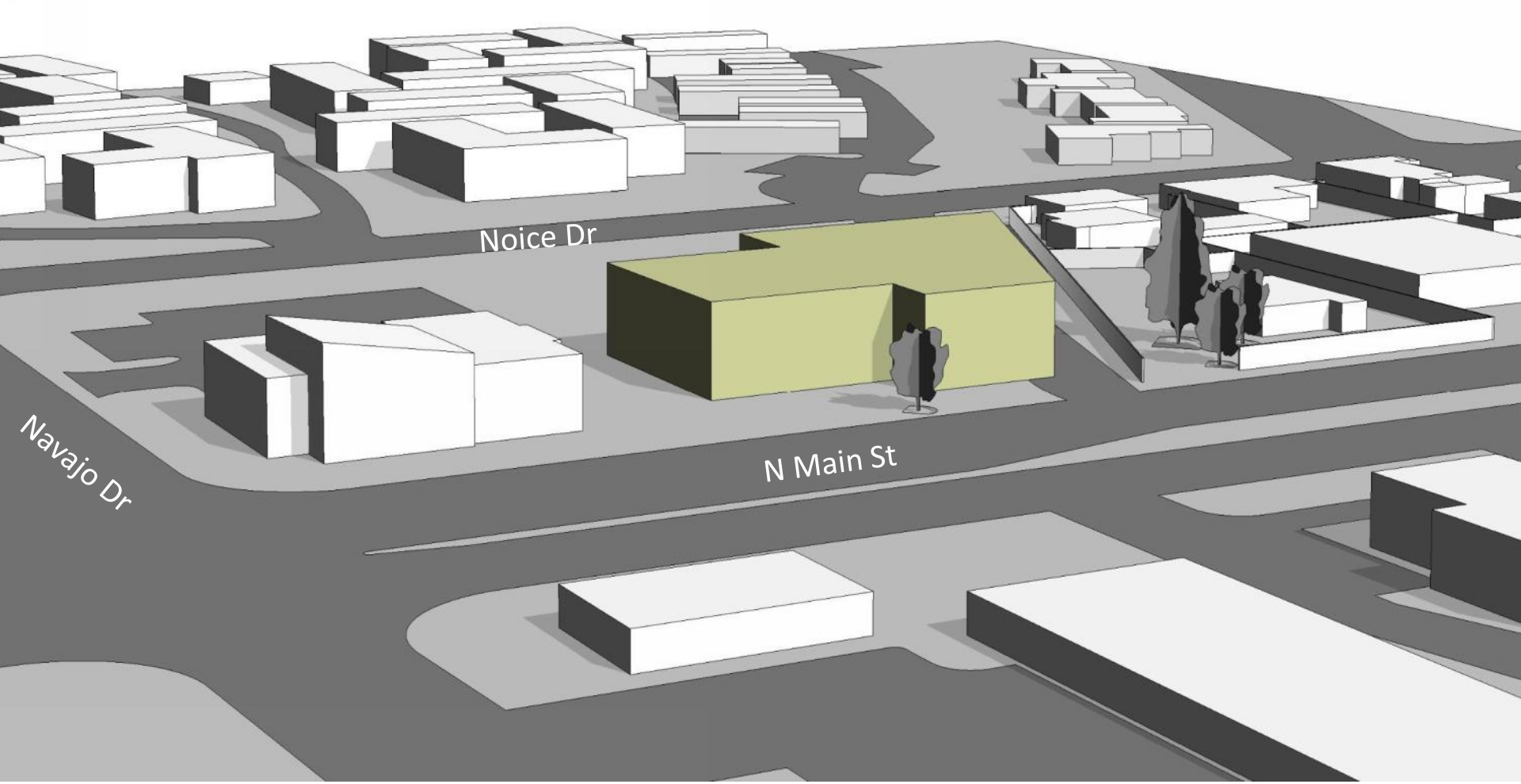
Entry & Access





Mass & Civic Presence





Site & Community Context



Passionate Library Architects



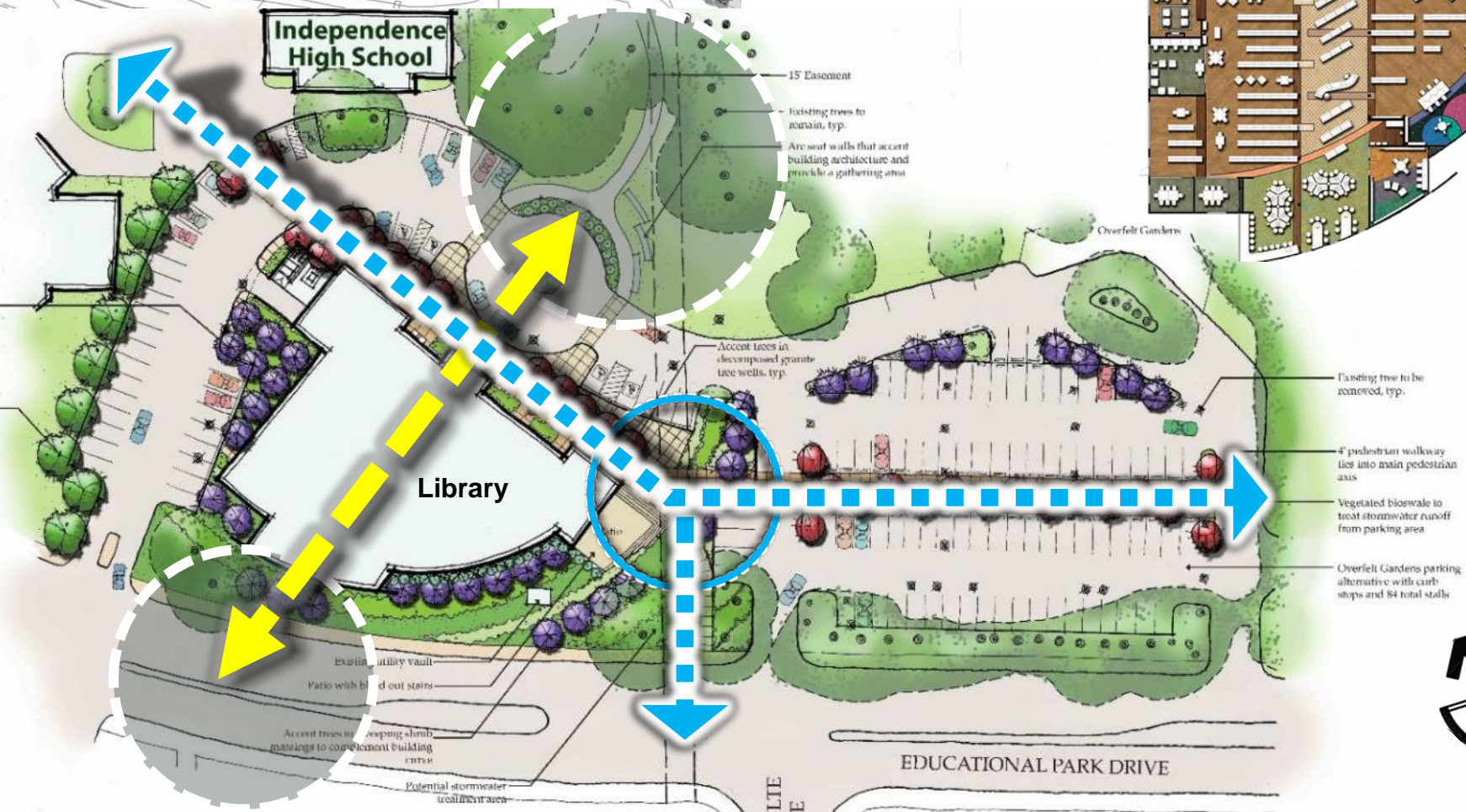
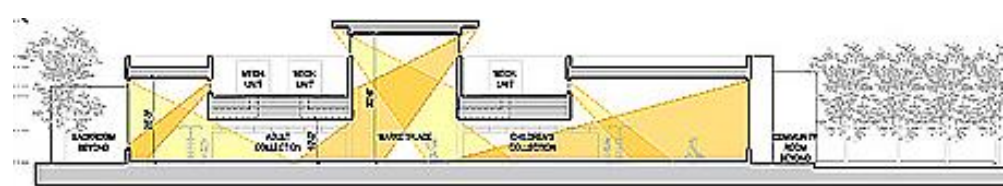
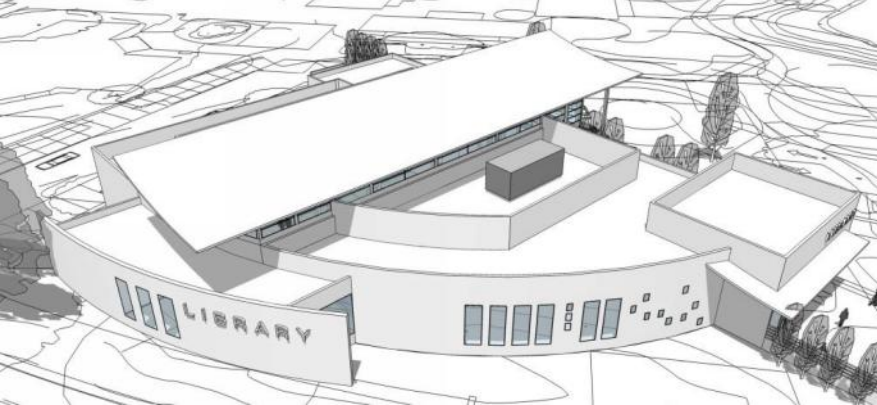
*Achieving Your
Vision is Achieving
Our Vision.*



*Catalyst for Learning &
Community
Transformation*



*Honoring the
Character of the
Community*



- Light Filled
- Energy Efficient
- Designing an Experience
- Community Connection



EDUCATIONAL PARK BRANCH LIBRARY

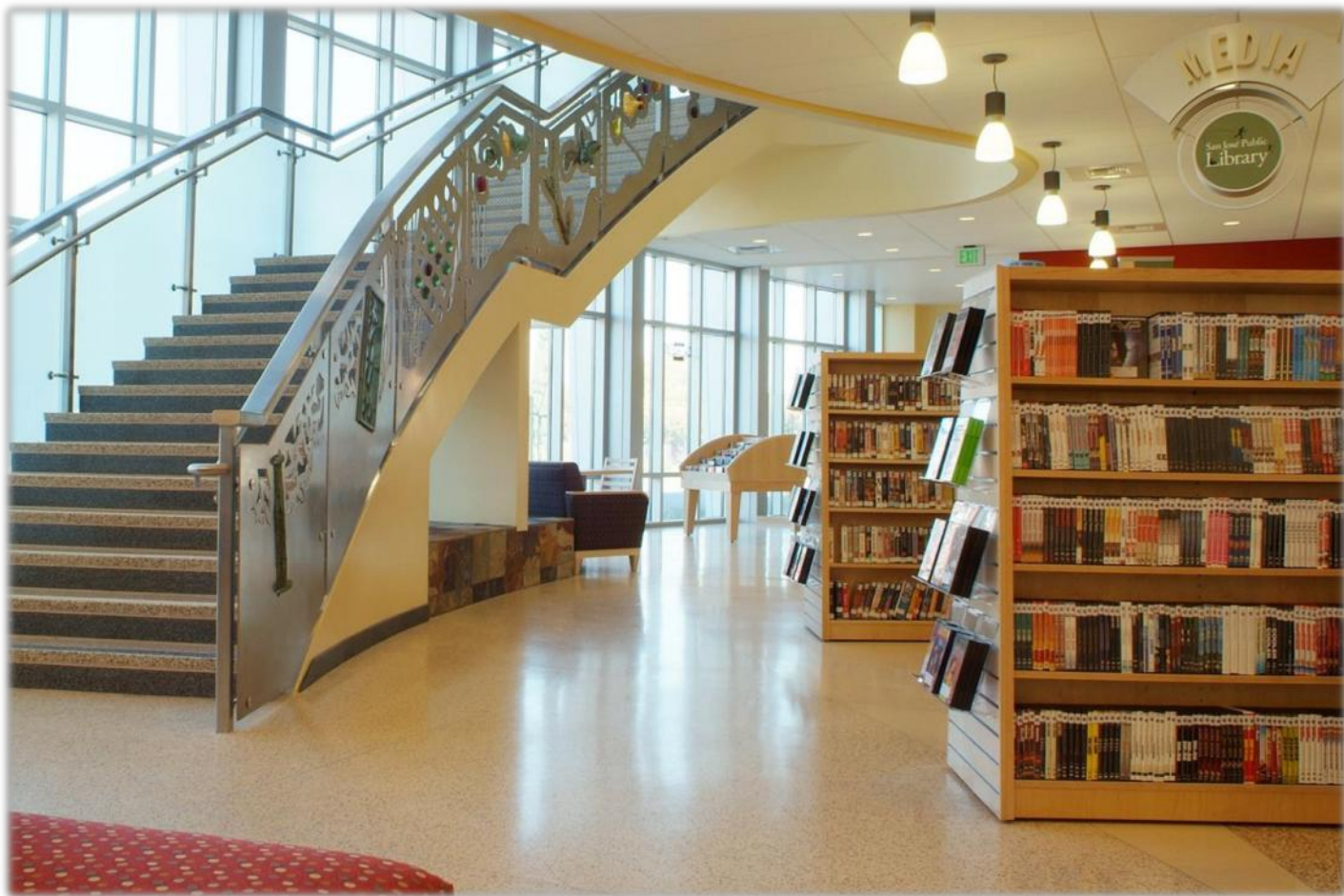
- Daylighting
- Indoor / Outdoor
- Contextual
- Sensitive to Scale





- Main Street Edge
- Constrained Site
- Civic Presence

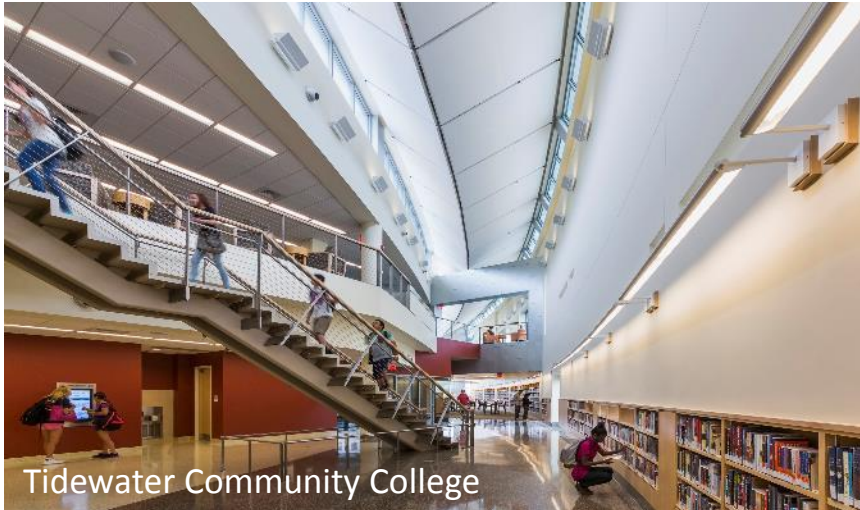




- Connecting to Nature
- Community Destination
- Expanding Possibilities







Our Select **LEED** Projects



Selected Library Experience

PLANNING

- Atherton San Mateo County Library Needs Assessment
- City of Campbell Civic Center & Library Master Plan
- City of Capitola Library Vision & Design Concept
- City of Pacifica Civic Center Master Plan & Library Needs Assessment
- City of Pleasant Hill Library Needs Assessment
- Contra Costa County Library Central Service Model
- City of Sunnyvale Library of the Future Study & Strategy
- CSU Monterey Bay Strategic Library Vision
- Innovative Branch Services for San José Public Libraries
- Redwood Shores Community Library, State Grant Application
- San Jose Public Library Branch Branding & Standards
- San Ramon Joint-Use Library Needs Assessment & Operational Plan
- Santa Cruz Public Libraries Technical Standards
- Tidewater Community College & City of Virginia Beach, Library Feasibility Study
- Town of Los Gatos Civic Center & Library Master Plan
- Tully Branch Library Master Plan

ARCHITECTURE / INTERIOR DESIGN

- Cambrian Branch Library
- Dr. Martin Luther King, Jr. Joint-Use Library, City of San José, San José State University
- East Palo Alto Library, Interior Design
- Educational Park Branch Library
- Foster City Library Renovation
- Notre Dame High School, Manley Hall & Library
- Pearl Avenue Branch Library
- Redwood Shores Community Library
- Redwood City Main Library, Children's Area Renovation
- Richmond Library Renovation
- Rocklin Branch Library Renovation
- San Carlos Library Renovation
- St Simon Library & Administration Renovation
- Tidewater Community College & City of Virginia Beach Joint-Use Library
- Tully Community Branch Library