

GENERAL NOTES

1. DRAWING NOT TO SCALE.
2. WHITE THERMOPLASTIC SHALL BE USED ON STANDARD CROSSWALKS. YELLOW THERMOPLASTIC SHALL BE USED FOR SAFE ROUTE TO SCHOOL CROSSWALKS (ROUTES DETERMINED BY CITY ENGINEER).
3. ALL CROSSWALKS SHALL BE TRIPLE-4 TYPE.
4. NO RAISED PAVEMENT MARKERS SHALL BE INSTALLED WITHIN BIKE LANES.
5. TYPE G RAISED PAVEMENT MARKER SHALL BE PER CITY OF SALINAS STANDARD PLAN NO. 37B.

PUBLIC WORKS DEPARTMENT

ENGINEERING SERVICES DIVISION

CITY OF SALINAS

TITLE: **TRIPLE-4 CROSSWALK**

STANDARD PLAN

DESIGNED BY:
STAFF

DATE 2/3/2017

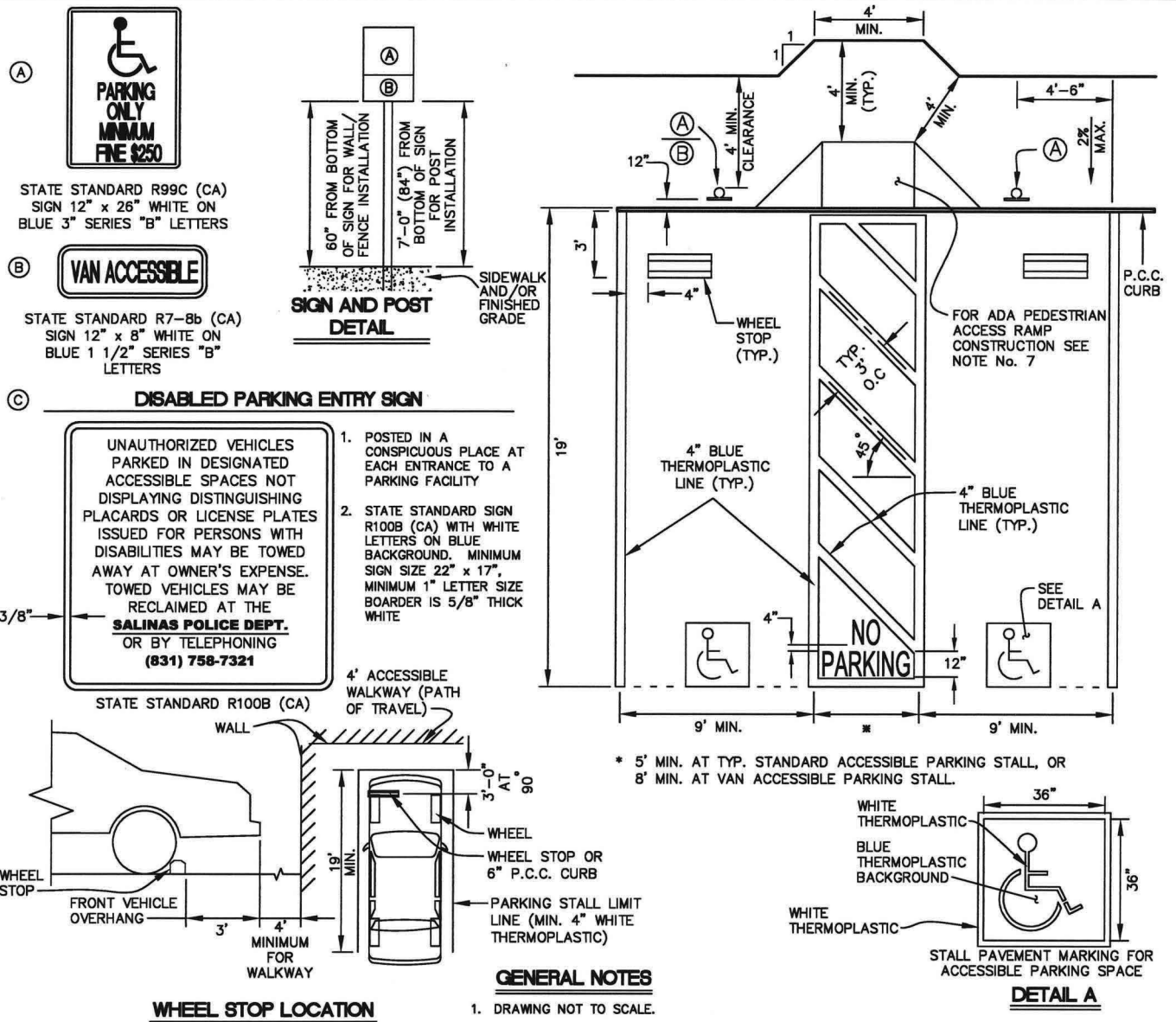
CADD BY:
PHAVANA A.

PROJECT MANAGER:
EDA M. HERRERA, P.E.

FRANCISCO A. AGUAYO,
CITY ENGINEER, R.C.E. 59378



44R



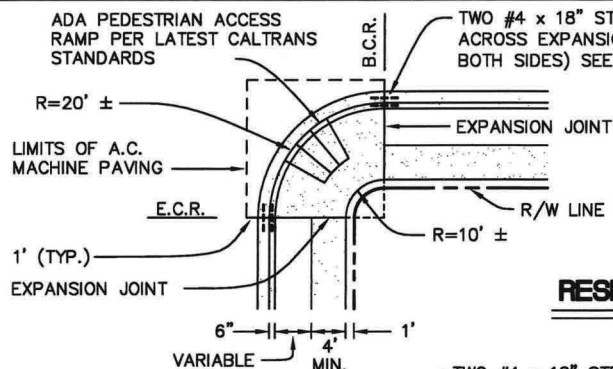
GENERAL NOTES

- DRAWING NOT TO SCALE.
- PAVEMENT AND STRIPING SHALL BE IN THERMOPLASTIC PER CITY STANDARD SPECIFICATIONS.
- TRAFFIC SIGN SHALL BE CONSTRUCTED OF 0.08" THICK ALUMINUM ALLOY. SIGN MATERIAL SHALL BE 3M DIAMOND GRADE CUBED REFLECTIVE SHEETING SERIES 4090 (OR APPROVED EQUAL BY THE CITY ENGINEER). THE REFLECTIVE SHEETING SHALL CONFORM WITH THE FEDERAL SPECIFICATIONS L-S300A.
- PARKING STALLS SHALL HAVE A MINIMUM OF SIDE CLEARANCE OF 1' FROM COLUMNS AND OTHER STRUCTURES. A 4' ACCESS WALKWAY IS REQUIRED UNDER TITLE 24 OF STATE REG.
- ANGLE PARKING STALLS SHALL BE CONSTRUCTED PER SECTION 37-177 OF THE SALINAS CITY CODE. ALL LAYOUTS SHALL BE APPROVED BY THE CITY ENGINEER.
- LOCATION AND PLACEMENT OF CONTROL POINTS AND PRELIMINARY MARKINGS ARE SUBJECT TO APPROVAL BY THE CITY ENGINEER. SIGNS SHALL BE IN ACCORDANCE WITH SECTION 56-2 OF THE CITY STANDARD SPECIFICATIONS AND PLANS.
- FOR ON-STREET PARKING, ADA COMPLIANT PEDESTRIAN ACCESS RAMPS SHALL CONFORM TO THE LATEST CALTRANS STANDARD PLANS.
- A SINGLE ACCESSIBLE PARKING STALL SHALL HAVE A LOADING/UNLOADING ACCESS AISLE ON THE PASSENGER SIDE OF THE VEHICLE. WHEN TWO ACCESSIBLE PARKING STALLS ARE ADJACENT TO EACH OTHER, THE ACCESS AISLE MAY BE SHARED BETWEEN THE TWO PARKING STALLS.
- FOR ACCESSIBLE DIAGONAL PARKING REFER TO CALTRANS LATEST REVISED STANDARD PLANS.
- ONE IN EVERY 6 OR FRACTION OF 6 OFF-STREET ACCESSIBLE PARKING SPACES SHALL BE A VAN ACCESSIBLE SPACE.

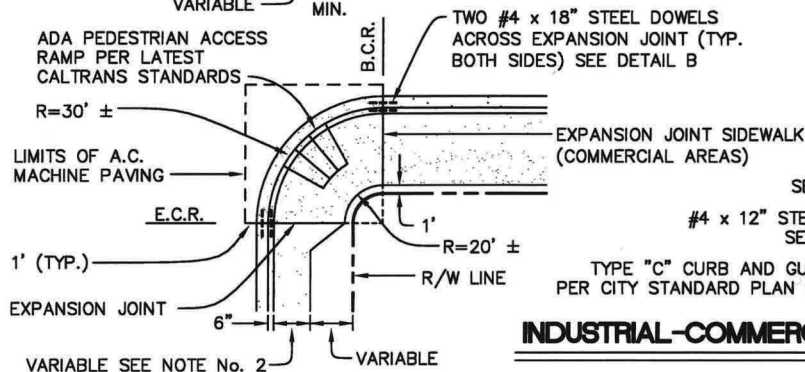
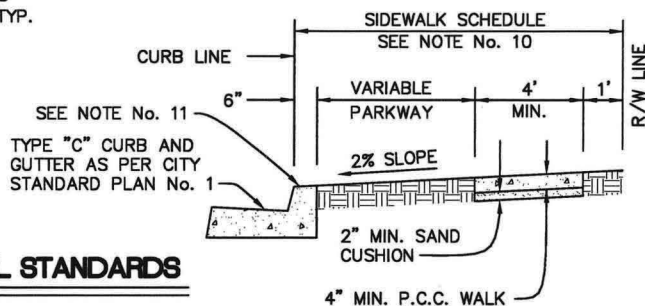
DETAIL A

STALL PAVEMENT MARKING FOR ACCESSIBLE PARKING SPACE

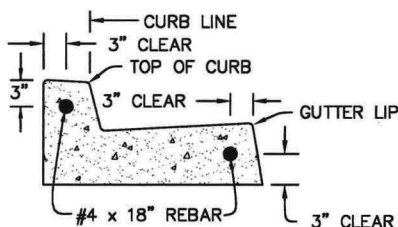
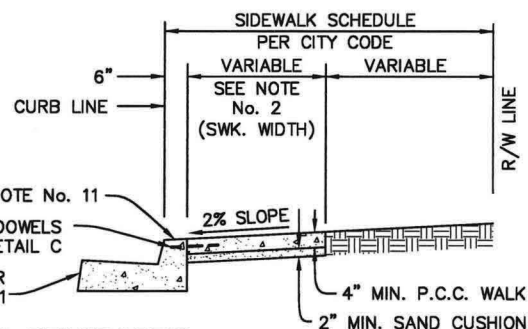
PUBLIC WORKS DEPARTMENT		CITY OF SALINAS
ENGINEERING SERVICES DIVISION		
TITLE: OFF-STREET AND ON-STREET ACCESSIBLE PARKING		
DESIGNED BY: STAFF	DATE: <u>2/3/2017</u>	STANDARD PLAN 42R
CADD BY: STAFF		
PROJECT MANAGER: EDA M. HERRERA, P.E.		



RESIDENTIAL STANDARDS

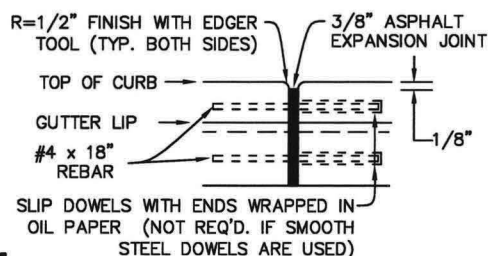


INDUSTRIAL-COMMERCIAL STANDARDS



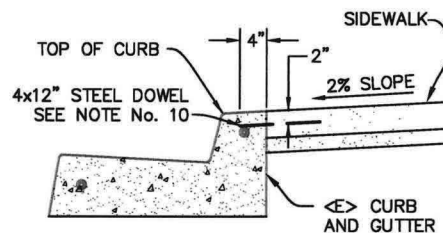
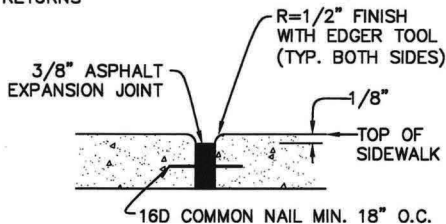
DETAIL 'B'

TYPICAL DOWEL DETAIL AT CURB RETURNS



DETAIL 'A'

TYPICAL SIDEWALK EXPANSION JOINT



DETAIL 'C'

TYPICAL DOWEL DETAIL AT CURB/SIDEWALK

GENERAL NOTES

- DRAWING NOT TO SCALE.
- CONCRETE SIDEWALK SHALL BE 8.5' MINIMUM IN COMMERCIAL AREAS AND 5.5' MINIMUM FOR INDUSTRIAL AREAS. A 6' SIDEWALK CAN BE USED IN COMMERCIAL AREAS UPON APPROVAL OF THE CITY ENGINEER. ALL SIDEWALKS SHALL HAVE A MINIMUM 4' CLEAR PASSAGE, FREE OF OBSTRUCTIONS AND/OR HINDRANCES, AS OUTLINED IN TITLE 24 OF THE CALIFORNIA BUILDING CODE.
- ALL SIDEWALKS SHALL BE ONE COURSE, CLASS "3" P.C.C. WITH A FINE BROOM FINISH.
- ASPHALT EXPANSION JOINTS SHALL BE PLACED WITH MAXIMUM SPACING OF 60' AND WHEREVER SIDEWALK ADJOINS EXISTING BUILDING OR SIDEWALK. SCORE LINES SHALL BE PROVIDED FOR EVERY 16 TO 22 S.F. AT 4' INTERVALS AND PROPORTIONAL OR AS DIRECTED BY THE CITY ENGINEER.
- ASPHALT EXPANSION JOINT SHALL BE COMPOSED OF ASPHALT, FIBER, AND MINERAL FILLER PREMOLDED INTO SHEETS WITH ASPHALT IMPREGNATED LINERS ON BOTH SIDES AND SHALL CONFORM WITH ASTM 1751 AND AASHTO M-33-48 SPECIFICATIONS.
- REBAR SHALL BE INSTALLED PER DETAIL "B" AT B.C.R. AND E.C.R.
- CONTRACTOR SHALL STAMP HIS/HER NAME, MONTH, AND YEAR OF CONSTRUCTION ON SIDEWALK, WITH A MINIMUM OF ONCE PER CONSTRUCTION AND ONCE PER EACH 500 S.F., MONTH AND YEAR MAY BE STAMPED IN NUMBERS.
- ALL DIMENSIONS AS SHOWN UNLESS OTHERWISE SPECIFIED ON PLANS.
- ADA PEDESTRIAN ACCESS RAMP SHALL BE PER LATEST CALTRANS STANDARDS.
- SIDEWALKS LOCATED ADJACENT TO CURB, SHALL HAVE DOWELS BETWEEN CURB AND SIDEWALK REQUIRED AT 12' ON CENTER.
- CONTRACTOR SHALL STAMP TOP OF CURB WITH THE LETTERS "G" (GAS), "S" (SEWER), AND/OR "W" (WATER) TO IDENTIFY UTILITY LOCATIONS.

PUBLIC WORKS DEPARTMENT

ENGINEERING SERVICES DIVISION

CITY OF SALINAS

TITLE: **SIDEWALKS AND CURB RETURNS**

STANDARD PLAN

DESIGNED BY:
STAFF

DATE 2/3/2017

CADD BY:
STAFF

PROJECT MANAGER:
EDA HERRERA P.E.

FRANCISCO A. AGUAYO,
CITY ENGINEER, R.C.E. 59378



2R