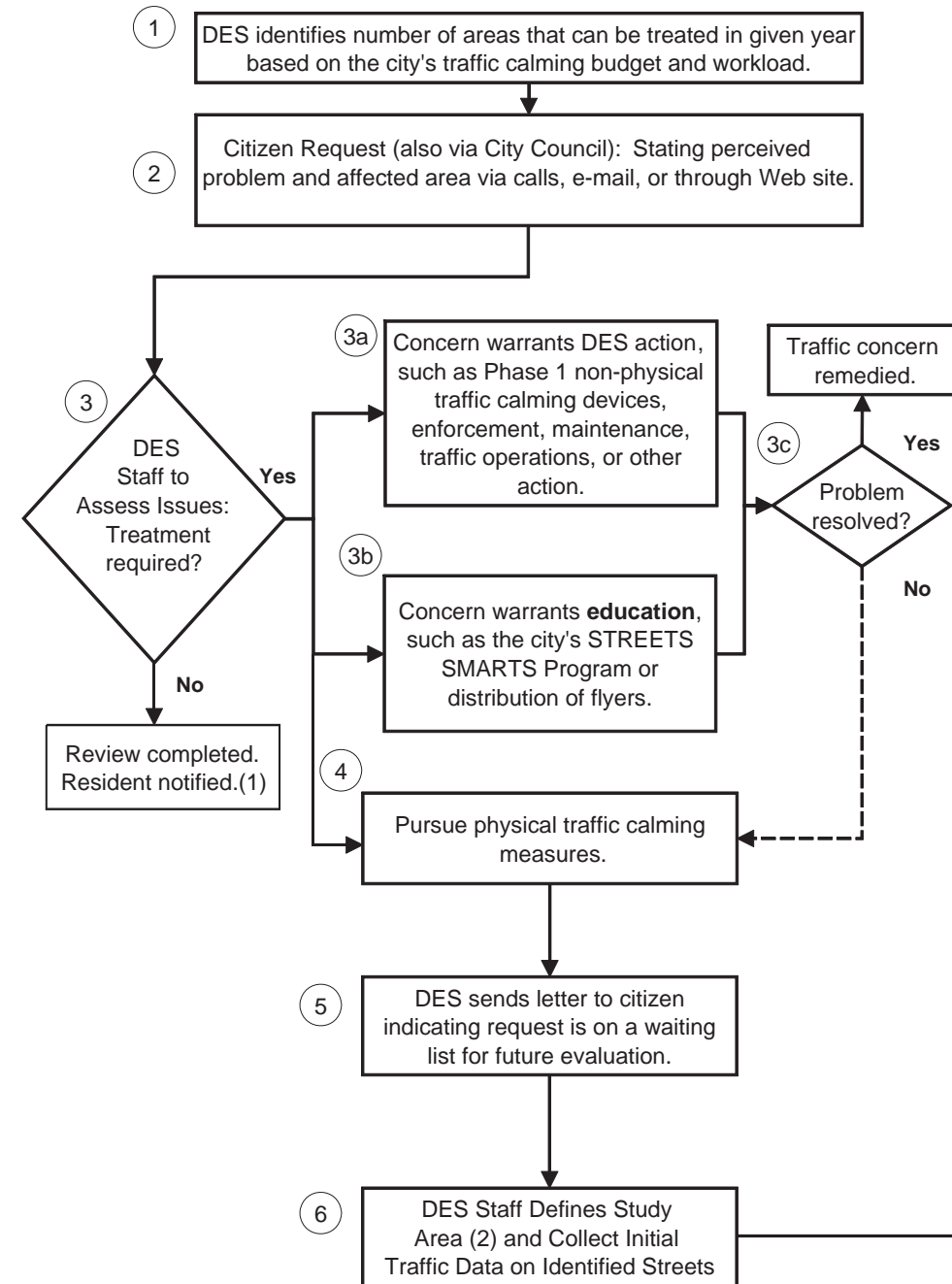
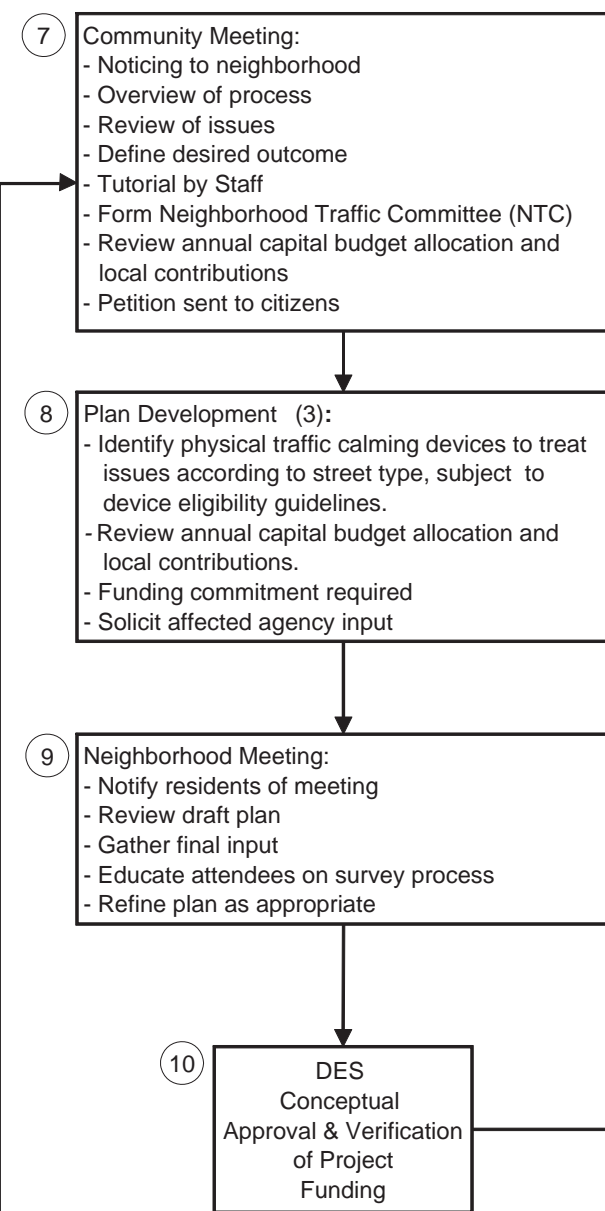


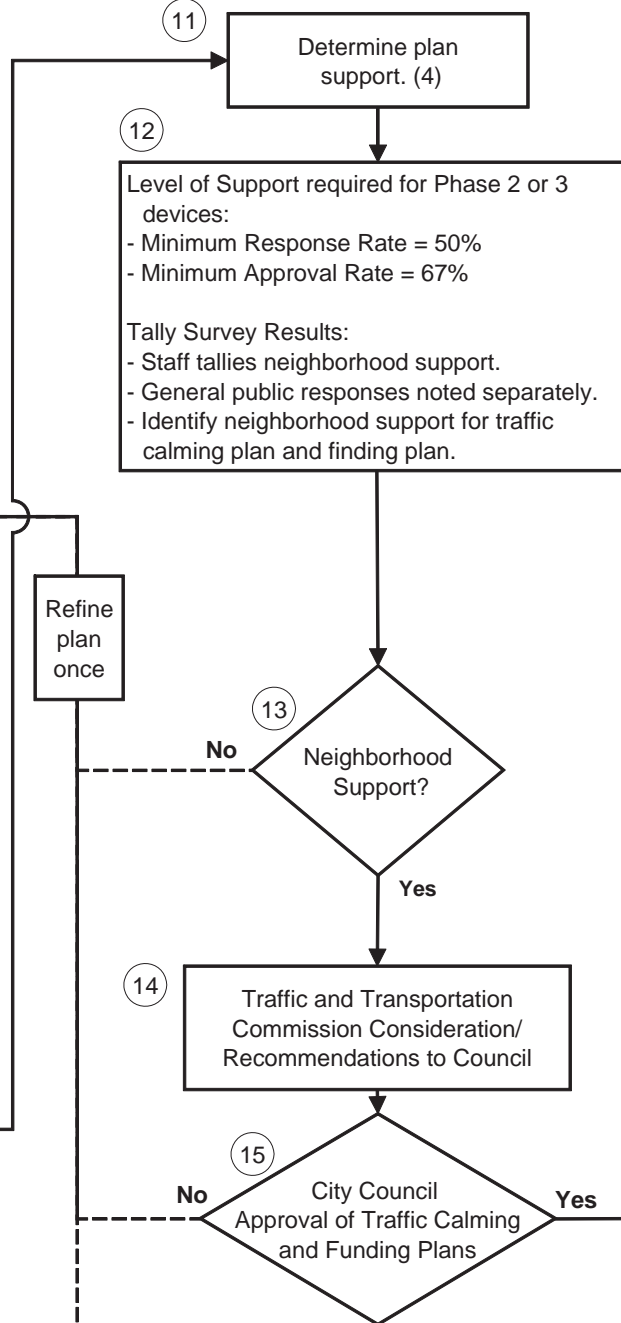
1. Plan Initiation



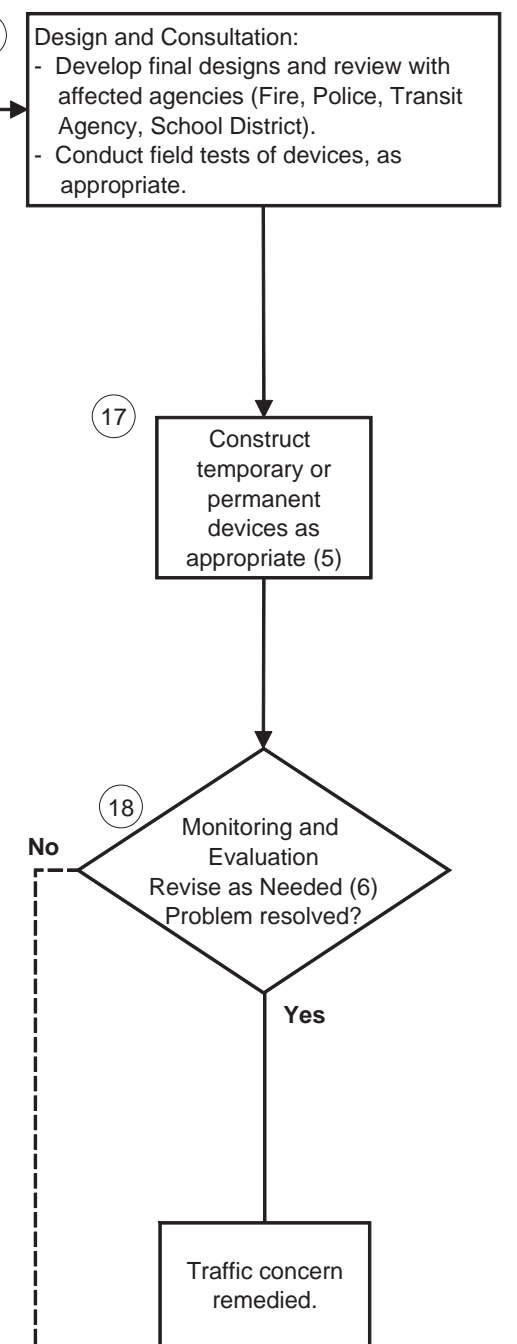
2. Plan Development



3. Plan Support



4. Plan Implementation



- (1) A response is sent to every citizen who made a request informing them of the course of action.
- (2) Study area to include all streets that may experience a significant change in traffic due to treatment and will generally be bounded by arterials, freeways, rivers, etc.
- (3) First round of plan development will focus on speed control devices, if Development and Engineering Services (DES) implementation of non-physical measures in Step 3a/3b.
- (4) Surveys distributed within study area. Multi Unit Dwellings' responses do not count toward the minimum response rate. Survey includes three questions: (a) Do you support the proposed plan? (b) Would you oppose a traffic calming device adjacent to your property? (c) Would you contribute to neighborhood funding of the proposed traffic calming measures?
- (5) Temporary devices are constructed at staff discretion based on previous experience. Temporary devices can be converted to permanent devices after 6 months of acceptable performance.
- (6) If non-physical and speed control devices are found to be ineffective, DES may initiate volume control plan.