



National Auto Fleet Group

A Division of Chevrolet of Watsonville

490 Auto Center Drive, Watsonville, CA 95076

(855) 289-6572 • (855) BUY-NJPA • (831) 480-8497 Fax

Fleet@NationalAutoFleetGroup.com

3/19/2018

Quote ID 6522

Mr. Ronald Patterson
City of Salinas
426 Work Street
Salinas, CA 93901

Dear Ronald Patterson,

National Auto Fleet Group is pleased to quote the following vehicle(s) for your consideration. **One (1) New/Unused (2019 Ford Super Duty F-550 DRW (F5H) XL 4WD Reg Cab 169" WB 84" CA with Mechanics Truck Body and Related Equipment,**) and delivered to your specified location, each for

(1) One Unit

NJPA Contract Price	\$	41,965.46
American Truck and Trailer Quote	\$	85,266.00
Tax (9.25%)	\$	11,768.91
CA Tire Fee	\$	10.50

Total	\$	139,010.87
--------------	-----------	-------------------

-per your attached specifications:

This vehicle(s) is available under the National Joint Powers Alliance Contract Number 120716-NAF. Please reference this Contract Number on all Purchase Orders to National Auto Fleet Group. Payment terms are Net 30 days after receipt of vehicle.

Thank you in advance for your consideration. Should you have any questions, please do not hesitate to call.

Sincerely,


Jesse Cooper
National Fleet Manager

Office (855) 289-6572 / Fax (831) 480-8497



In order to Finalize your Quote, please submit this purchase packet to your governing body for Purchase Order Approval. Once you issue a Purchase Order please send by:

Fax: (831) 480-8497

**Mail: National Auto Fleet Group
490 Auto Center Drive
Watsonville, CA 95076**

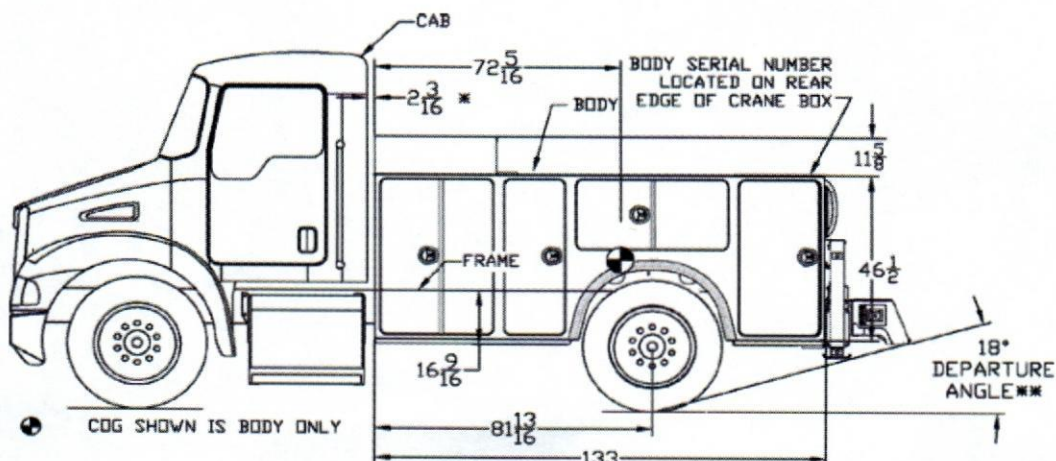
Email: Fleet@nationalautofleetgroup.com

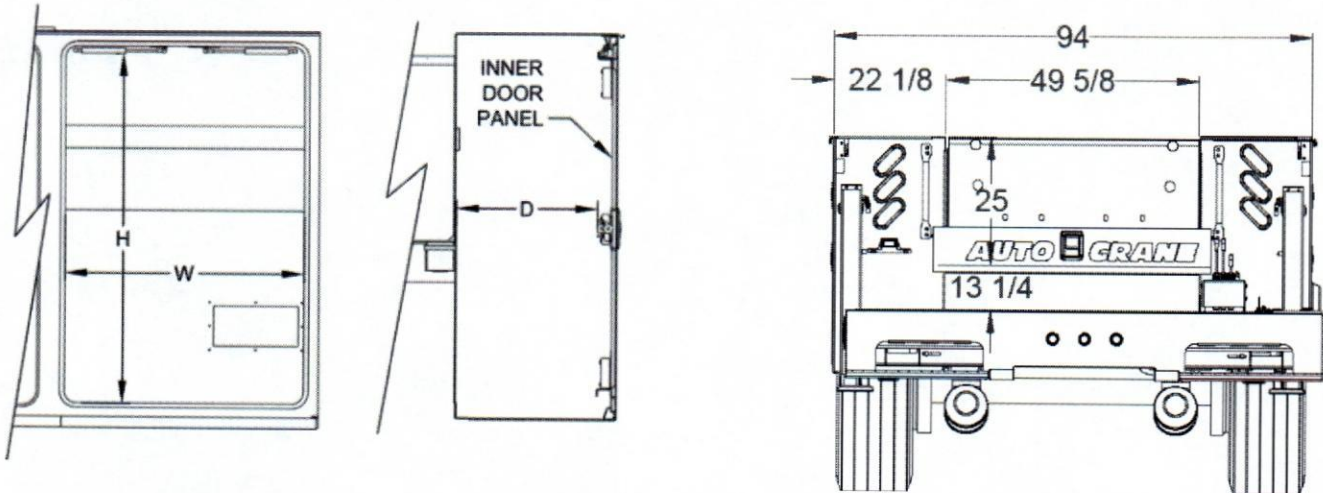
We will then send a W-9 if you need one

**Please contact our main office with any questions:
1-855-289-6572**

Vehicle Configuration Options

Confidential Important Notice





DOOR OPENING	WIDTH (W)	HEIGHT (H)	DEPTH (D)	VOL. CU. FT.
SIZES/DEPTH				
FRONT STD.	32 3/8	41 3/8	18 7/8	20.2
FRONT TALL	32 3/8	53 1/8	18 7/8	25.3
MID	18 1/8	41 3/8	18 7/8	12.33
HORIZONTAL	40	17	18 7/8	11.46
REAR***	26	41 3/8	18 7/8	16.68
INSIDE COMPARTMENT SIZES (STD)		TOTAL BODY CU. FT.		121.34
INSIDE COMPARTMENT SIZES (TALL)		TOTAL BODY CU. FT.		126.44
			WEIGHT	3330 LBS

STANDARD GAP USING 84CA BODY. CHECK CHASSIS BODY BUILDER BOOK FOR REQUIRED GAP BETWEEN BODY & CHASSIS

DEPARTURE ANGLE SHOWN FOR REFERENCE ONLY. ANGLE WILL VARY DEPENDING ON CHASSIS.

REAR COMPARTMENT DIMENSIONS/VOLUME ARE FOR NON CRANE BOX ONLY

VOLUME IS TAKEN FROM WALL TO WALL DIMENSIONS **NOT DOOR OPENING SIZES**

Auto Crane HC-7 Series:



Capacity: 7,000 lbs

Rating: 38,000 ft lbs maximum lifting capacity of 7,000 lbs

Features and Benefits

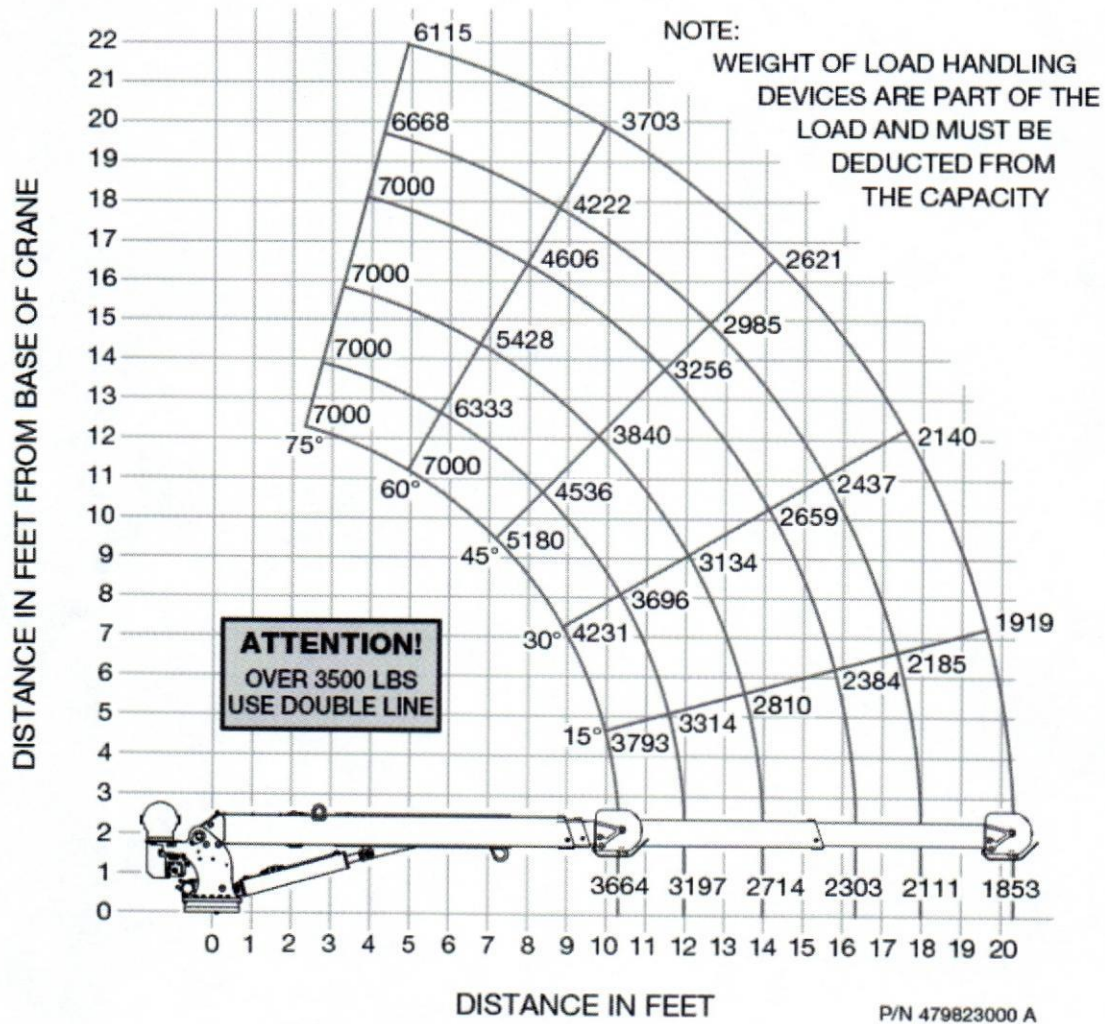
- Automatic overload protection system
- Full, continuous power rotation - 370° movement for maximum versatility in lifting
- Capable of lifting at 100% in all positions on Titan® crane bodies with outriggers
- -14° to +75° boom elevation
- Small sheave - fits into tighter spaces

NexStar FM Remote Control System

Specifications

Weight:	1,705 lb (773.4 kg)
Stowed Boom Length:	13' 4" (3.96 m)
Extended Boom Length:	20' 6" (6.1 m)
Width:	1' 11¼" (.59 m)
Height:	2' 8¾" (.83 m)
Base Plate Dimensions:	16.75" x 16.75" (.43 m x .43 m)
Single Line Speed:	55 ft/min (16.8 m/min)
Boom Down:	18-21 seconds (full stroke of cylinder)
Boom Retract:	16-22 seconds (full stroke of cylinder)
360° Boom Rotation:	41-50 seconds
Hydraulic Requirements:	8 gpm (30 L/min) at 2,750 psi (189.6 bar)
Cable:	95 ft (28.96 m) of 3/8" (9.52 mm) aircraft quality cable
Standards:	OSHA 1910.180 ANSI B30.5
Warranty	Two-year factory warranty

HC-7



Outriggers:

- Fully hydraulic outriggers with controls will be installed at the rear of the truck.

CA OSHA Crane Certification:

- Third party crane certification to ensure compliance to California OSHA requirements.

Warning/Spot- Flood Lights/ Inverter:

- A. LED Rope lights installed in all compartments.
- B. A Whelen Justice Series Lightbar mounted to the top of the cab guard with controller inside the cab will be provided.
- C. Two (2) Whelen ION Amber Strobes – mounted in the cab grille.
- D. Three telescoping flood/ spotlights provided and installed as follows: (2) at the front of the body and (1) at the curbside rear of the body.
- E. A Vanner 2800 Watt Inverter, Model #IT-12-2800 installed in the curbside 24" wide compartment on the top shelf wired to the auxiliary battery with (2) GFI duplex receptacles, one (1) at the rear of the body on the streetside side and one (1) at the front of the body on the curbside.
- F. Sure Power 1314-200 amp battery separator will be provided and installed.

Miscellaneous:

- A. Additional suspension - spring support for crane.
- B. A Ramsey Winch -- Patriot 15000 installed on the front of the truck with wireless remote control.

Pre-Construction Meeting:

Customer(s) visits facility to inspect the chassis, body and equipment. This meeting will be conducted prior to installing and manufacturing some of the equipment on the chassis. Body drawings will be provided for approval at or before this meeting. Customer is responsible for their travel arrangements.

Pre-Paint/ Final Inspection:

The customer will be notified upon request prior to the truck being painted. Customer is responsible for their travel arrangements.

References:

A minimum of five (5) references (name, organization and phone number), who have taken delivery of trucks of this type with the options listed in this specification and installed by the bidder within the last year will be provided. This excludes prototypes or experimental units.

Service facilities:

The final stage manufacture must be located within 120 miles of Salinas, CA. and be a factory authorized sales and service center for all components listed in this specification.

Engineering:

The final stage manufacture must have either a professional engineer registered by the CA State Board for Professional Engineers on staff, or must have a third party registered professional engineer that has reviewed and approved the proposed structural, layout and installation of all components/ equipment. Engineers contact information must be provided upon request.

Paint and finish:

- C. The body exterior and compartment interiors to be painted white to match the cab.
- D. Line- X to be installed on a) the cargo area floor and walls, b) inside tailgate, c) rear step area
- E. All surfaces to be acid etched, cleaned of rust, grease, oil, dirt, millscale, etc., prior to the prime coat of paint
- F. All exterior and interior surfaces coated with minimum two coats of metal primer
- G. Body compartment interiors painted with a minimum two coats of white paint.
- H. All installed switches and/or equipment control(s), must be properly labeled as to function and condition (i.e., on, off, etc.). All required identification labels or placards, interior or exterior, to be permanent non-fading (i.e., engraved or die-stamped) and affixed using rivets. **Adhesive labels, metal or plastic, are not acceptable**
- I. Any and all body attachments shall be installed using a rubber gasket material and attachment caulked to prevent water leakage.

Price F.O.B. Salinas, CA 93901 = \$85,266.00

Payment: 2%- 10 discount, Net 30- 1.5 % Interest on outstanding past 30

Excludes chassis and applicable taxes

ENGINE

Code	Description
99Y	ENGINE: 6.8L 3-VALVE SOHC EFI NA V10, (STD)

TRANSMISSION

Code	Description
44P	TRANSMISSION: TORQSHIFT 6-SPEED AUTOMATIC (6R140), -inc: SelectShift (STD)

TIRES

Code	Description
TFB	TIRES: 225/70RX19.5G BSW AS, (STD)

PRIMARY PAINT

Code	Description
Z1	OXFORD WHITE

PAINT SCHEME

Code	Description
—	STANDARD PAINT

SEAT TYPE

Code	Description
AS	MEDIUM EARTH GRAY, HD VINYL 40/20/40 SPLIT BENCH SEAT, -inc: center armrest, cupholder, storage and driver's side manual lumbar

AXLE RATIO

Code	Description
X8L	LIMITED SLIP W/4.88 AXLE RATIO

ADDITIONAL EQUIPMENT

Code	Description
90L	POWER EQUIPMENT GROUP, -inc: Deletes passenger side lock cylinder, upgraded door-trim panel, Accessory Delay, Advanced Security Pack, SecuriLock Passive Anti-Theft System (PATS) and inclination/intrusion sensors, MyKey, owner controls feature, Remote Keyless Entry, Trailer Tow Mirrors w/Power Heated Glass, manual telescoping, heated convex spotter mirror and integrated clearance lamps/turn signals, Power Front Side Windows, 1-touch up/down driver/passenger window, Power Locks
62R	TRANSMISSION POWER TAKE-OFF PROVISION, -inc: transmission mounted live drive and stationary mode PTO
52B	TRAILER BRAKE CONTROLLER, -inc: smart trailer tow connector, Verified to be compatible w/electronic actuated drum brakes only
68M	GVWR: 19,500 LB PAYLOAD PLUS UPGRADE PACKAGE, -inc: upgraded frame, rear-axle and low deflection/high capacity springs, Increases max RGAWR to 14, 706, NOTE: See Order Guide Supplemental Reference for further details on GVWR
18B	PLATFORM RUNNING BOARDS
585	RADIO: AM/FM STEREO/MP3, -inc: 4-speakers, SYNC Communications & Entertainment System, enhanced voice recognition w/911 Assist, 4.2" LCD center stack screen, AppLink, 1 smart-charging

	USB port and steering wheel audio controls
525	STEERING WHEEL-MOUNTED CRUISE CONTROL
872	REAR VIEW CAMERA & PREP KIT, -inc: cab wiring
OPTION PACKAGE	
Code	Description
660A	ORDER CODE 660A

2019 Fleet/Non-Retail Ford Super Duty F-550 DRW XL 4WD Reg Cab 169" WB 84" CA

WINDOW STICKER

2019 Ford Super Duty F-550 DRW XL 4WD Reg Cab 169" WB 84" CA		
CODE	MODEL	MSRP
F5H	2019 Ford Super Duty F-550 DRW XL 4WD Reg Cab 169" WB 84" CA	\$42,045.00
OPTIONS		
99Y	ENGINE: 6.8L 3-VALVE SOHC EFI NA V10, (STD)	\$0.00
44P	TRANSMISSION: TORQSHIFT 6-SPEED AUTOMATIC (6R140), -inc: SelectShift (STD)	\$0.00
TFB	TIRES: 225/70RX19.5G BSW AS, (STD)	\$0.00
Z1	OXFORD WHITE	\$0.00
—	STANDARD PAINT	\$0.00
AS	MEDIUM EARTH GRAY, HD VINYL 40/20/40 SPLIT BENCH SEAT, -inc: center armrest, cupholder, storage and driver's side manual lumbar	\$0.00
X8L	LIMITED SLIP W/4.88 AXLE RATIO	\$360.00
90L	POWER EQUIPMENT GROUP, -inc: Deletes passenger side lock cylinder, upgraded door-trim panel, Accessory Delay, Advanced Security Pack, SecuriLock Passive Anti-Theft System (PATS) and inclination/intrusion sensors, MyKey, owner controls feature, Remote Keyless Entry, Trailer Tow Mirrors w/Power Heated Glass, manual telescoping, heated convex spotter mirror and integrated clearance lamps/turn signals, Power Front Side Windows, 1-touch up/down driver/passenger window, Power Locks	\$915.00
62R	TRANSMISSION POWER TAKE-OFF PROVISION, -inc: transmission mounted live drive and stationary mode PTO	\$280.00
52B	TRAILER BRAKE CONTROLLER, -inc: smart trailer tow connector, Verified to be compatible w/electronic actuated drum brakes only	\$270.00
68M	GVWR: 19,500 LB PAYLOAD PLUS UPGRADE PACKAGE, -inc: upgraded frame, rear-axle and low deflection/high capacity springs, Increases max RGAWR to 14, 706, NOTE: See Order Guide Supplemental Reference for further details on GVWR	\$1,155.00
18B	PLATFORM RUNNING BOARDS	\$320.00
585	RADIO: AM/FM STEREO/MP3, -inc: 4-speakers, SYNC Communications & Entertainment System, enhanced voice recognition w/911 Assist, 4.2" LCD center stack screen, AppLink, 1 smart-charging USB port and steering wheel audio controls	\$550.00
525	STEERING WHEEL-MOUNTED CRUISE CONTROL	\$235.00
872	REAR VIEW CAMERA & PREP KIT, -inc: cab wiring	\$415.00
660A	ORDER CODE 660A	\$0.00

SUBTOTAL	\$46,545.00
Advert/ Adjustments	\$0.00
Manufacturer Destination Charge	\$1,295.00
TOTAL PRICE	\$47,840.00

Est City: 16 MPG

Est Highway: 21 MPG

Est Highway Cruising Range: 594.30 mi

Any performance-related calculations are offered solely as guidelines. Actual unit performance will depend on your operating conditions.

Standard Equipment**MECHANICAL**

Engine: 6.8L 3-Valve SOHC EFI NA V10
Transmission: TorqShift 6-Speed Automatic (6R140) -inc: SelectShift
4.88 Axle Ratio
GVWR: 18,000 lbs Payload Package
50-State Emissions System
Transmission w/Oil Cooler
Manual Transfer Case
Part-Time Four-Wheel Drive
78-Amp/Hr 750CCA Maintenance-Free Battery w/Run Down Protection
HD 240 Amp Alternator
Towing w/Harness and Trailer Sway Control
10950# Maximum Payload
HD Shock Absorbers
Front And Rear Anti-Roll Bars
Firm Suspension
Hydraulic Power-Assist Steering
40 Gal. Fuel Tank
Single Stainless Steel Exhaust
Dual Rear Wheels
Manual Locking Hubs
Front Suspension w/Coil Springs
Leaf Rear Suspension w/Leaf Springs
4-Wheel Disc Brakes w/4-Wheel ABS, Front And Rear Vented Discs and Brake Assist
Upfitter Switches

EXTERIOR

Wheels: 19.5" Argent Painted Steel -inc: manual locking hubs
Tires: 225/70Rx19.5G BSW AS
Clearcoat Paint
Black Front Bumper w/Black Rub Strip/Fascia Accent and 2 Tow Hooks
Black Fender Flares
Black Side Windows Trim and Black Front Windshield Trim
Black Door Handles
Black Manual Side Mirrors w/Manual Folding
Manual Extendable Trailer Style Mirrors
Fixed Rear Window
Light Tinted Glass
Variable Intermittent Wipers
Aluminum Panels
Front Splash Guards

Black*Grille
Front License Plate Bracket
Fully Automatic Aero-Composite Halogen Daytime Running Lights Preference Setting Headlamps w/Delay-Off
Cab Clearance Lights

ENTERTAINMENT

Radio: AM/FM Stereo -inc: 4-speakers
Radio w/Seek-Scan and Clock
Fixed Antenna
1 LCD Monitor In The Front

INTERIOR

4-Way Driver Seat -inc: Manual Recline and Fore/Aft Movement
4-Way Passenger Seat -inc: Manual Recline and Fore/Aft Movement
Manual Tilt/Telescoping Steering Column
Gauges -inc: Speedometer, Odometer, Oil Pressure, Engine Coolant Temp, Tachometer, Transmission Fluid Temp, Engine Hour Meter, Trip Odometer and Trip Computer
Manual Air Conditioning
Illuminated Locking Glove Box
Interior Trim -inc: Chrome Interior Accents
Full Cloth Headliner
Urethane Gear Shift Knob
HD Vinyl 40/20/40 Split Bench Seat -inc: center armrest, cupholder, storage and driver's side manual lumbar
Day-Night Rearview Mirror
Passenger Visor Vanity Mirror
2 12V DC Power Outlets
Front Map Lights
Fade-To-Off Interior Lighting
Full Vinyl/Rubber Floor Covering
Underhood Lights
Instrument Panel Bin and Covered Dashboard Storage
Manual 1st Row Windows
Systems Monitor
Trip Computer
Outside Temp Gauge
Analog Display
Manual Adjustable Front Head Restraints
Air Filtration

SAFETY

Driveline Traction Control

Side Impact Beams

Dual Stage Driver And Passenger Seat-Mounted Side Airbags

Dual Stage Driver And Passenger Front Airbags w/Passenger Off Switch
--

Safety Canopy System Curtain 1st Row Airbags
--

Outboard Front Lap And Shoulder Safety Belts -inc: Height Adjusters
