

IF I RECEIVE A CITATION, WHAT DO I DO?

Follow the instructions on the citation. For additional information or to view the video of the incident and images captured go to www.ViolationInfo.com. Logon with the citation number and PIN provided on the citation.

HOW MUCH IS THE FINE AND WHAT ABOUT MY DRIVING RECORD?

The citation of Violation will be assessed a statutory penalty and upon conviction, a point may be added to your driving record.

WHAT HAPPENS WHEN YOU MAKE A LEFT OR RIGHT TURN AT AN INTERSECTION MONITORED BY A RED-LIGHT SAFETY CAMERA?

If a vehicle is completely within the intersection at the time the light turns red, you will not be issued a violation.

Right Turn: A red-light violation occurs if the motorist fails to make a complete stop behind the limit line. The motorist should only continue after making a complete stop and It is safe to proceed.

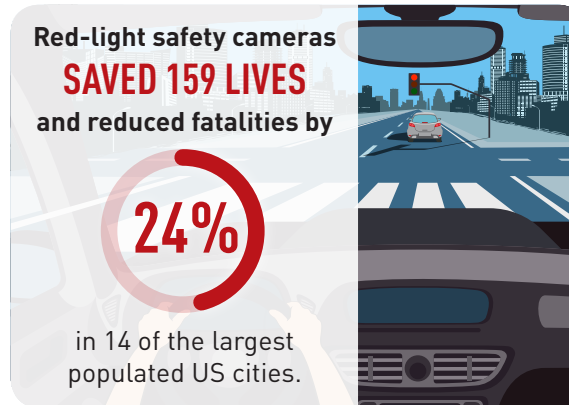
Right Turn with 'No Turn On Red' sign: A red-light violation occurs when the motorist completes a right turn at the intersection before the signal has changed to green for that direction.

Left Turn: A red-light violation occurs if the motorist fails to make a complete stop behind the limit line at the time the controlling signal changes to red. The motorist should only proceed when the signal has changed to green and it is safe.

INFORMATION RESOURCES

Public education is the key to making our streets safer for motorists, cyclists and pedestrians. Representatives of the program are available to speak to your organization or group. Please visit the City website for more information.

For more information, please visit:
<https://www.cityofsalinas.org>



Source: Insurance Institute for Highway Safety. "Effects of Red Light Camera Enforcement on Fatal Crashes in Large U.S. Cities." February 2011.
(<http://www.iihs.org/news/rss/pr020111.html> or <http://www.iihs.org/research/topics/pdf/r1151.pdf>)



2 PEOPLE ARE KILLED PER DAY
in red-light running crashes
on average in the United States.

Source: National Center for Statistics and Analysis (NCSA), an office of the National Highway Traffic Safety Administration.

RED-LIGHT SAFETY CAMERAS

In Salinas



This program is designed to reduce the number of violations, crashes and injuries caused by motorists running red lights. The objective of the program is to change driver behavior, making the community safer as more and more drivers obey the traffic signals and stop on red.

HOW THE SYSTEM WORKS

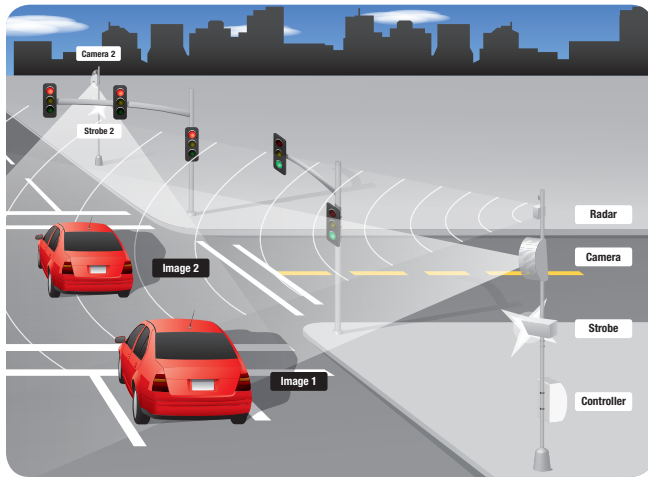


Image #1

The **1st Image** records the vehicle behind the violation point while the light is red

Image #2

The **2nd Image** records the vehicle proceeding through the intersection while the light is red

- Step 1:** The system activates when motion is detected just prior to the crosswalk AFTER the traffic signal has turned red. The single camera captures two images of an alleged violation, taken from the rear of the vehicle.
- Step 2:** The first image shows the vehicle at the white stop bar and the illuminated red light.
- Step 3:** The second image shows the violator in the middle of the intersection with the red light illuminated.
- Step 4:** The license plate image is a close-up from one of the images captured.
- Step 5:** Data, including the time, date, and duration of the yellow and red lights, also is recorded.
- Step 6:** In addition to the still shots, a 12-second digital video is recorded of the violation, including six seconds prior to and six seconds after running the red light.

WHY INSTALL RED-LIGHT CAMERAS?

The Automated Red-Light Camera Enforcement program works to improve public safety through increased enforcement of red light laws and increased public awareness of the dangers of red-light running.

California was the **#1 most dangerous state** for red-light running in 2017.

The city of Salinas is committed to the safety of the community and dedicated to reducing red-light violations and their potential for crashes and injuries on our roadways.



California was the **DEADLIEST STATE** in the nation for red-light running fatalities in 2017.



KEEPING THE COMMUNITY SAFE

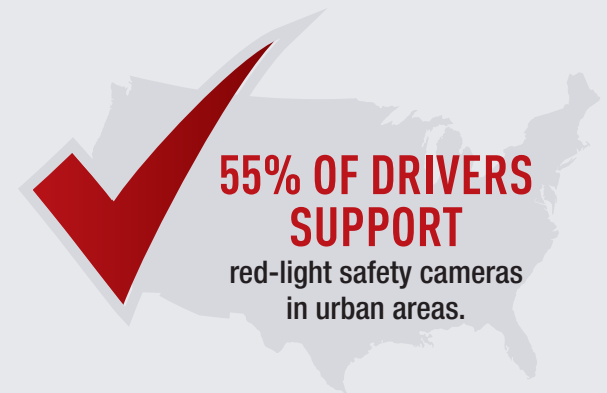
The City of Salinas urges citizens to pay attention while driving. Slow down, stop on red. When drinking, be responsible and use a designated driver. And always buckle up and be cautious on our roads.

Please do not drive distracted. Lives depend on it!

RED-LIGHT CAMERA LOCATIONS:

- SB Main/Boronda
- SB Main/Laurel
- SB Sanborn/Laurel
- SB Davis/Laurel

Please visit our website, <https://www.cityofsalinas.org> for additional information. Future red-light safety camera locations will be posted as they are determined.



Source: AAA Foundation. "2016 Traffic Safety Culture Index." Page 10. February 2017. https://www.aaafoundation.org/sites/default/files/2016TrafficSafetyCultureIndexReportandCover_0.pdf