

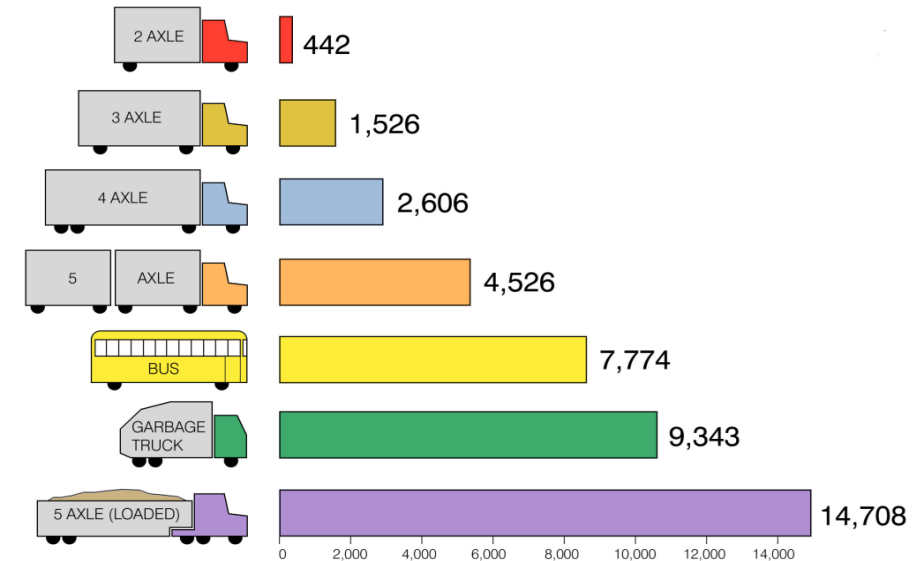
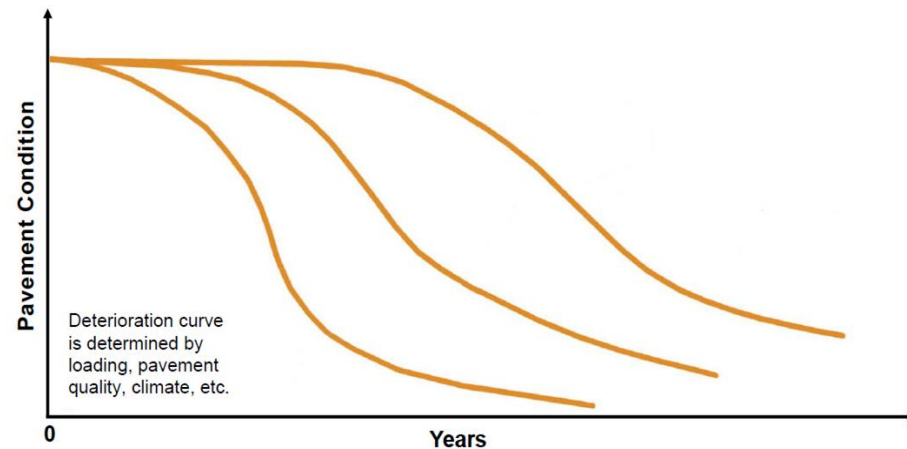
2020 Pavement Management System

Eda Herrera P.E., Senior Civil Engineer
City of Salinas

Joe Ririe P.E., Senior Principal Engineer
Pavement Engineering Inc.

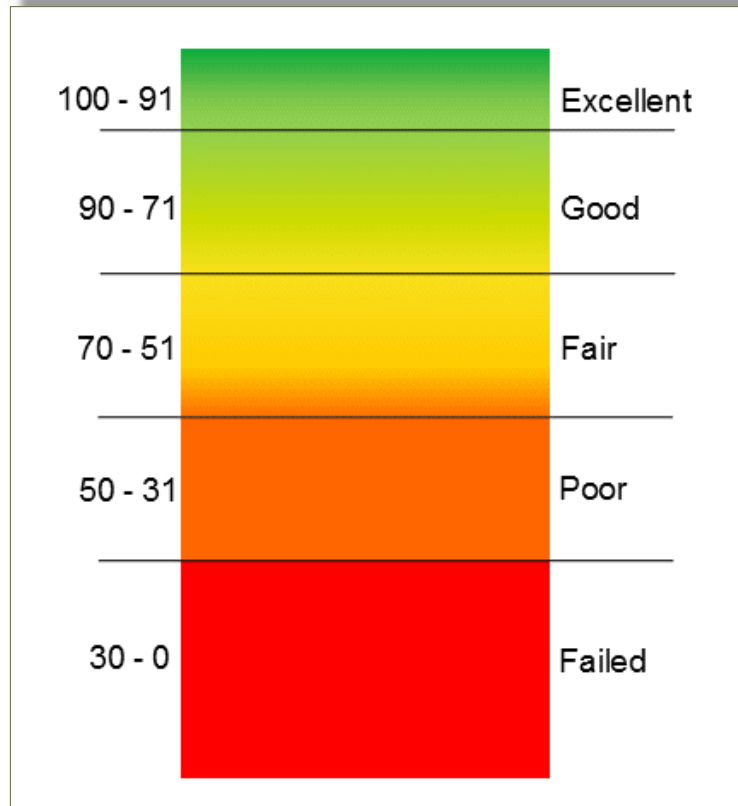


Pavement Deterioration



COMPARATIVE VEHICLE PAVEMENT STRESS
(S-10 BLAZER = 1 VEHICLE UNIT)

Pavement Condition Index - PCI



Pavement Condition Index (PCI) is an objective and rational basis for determining pavement condition and establishing maintenance priorities.

Common Pavement Distresses



Transverse or
Longitudinal Cracking



Alligator
Cracking



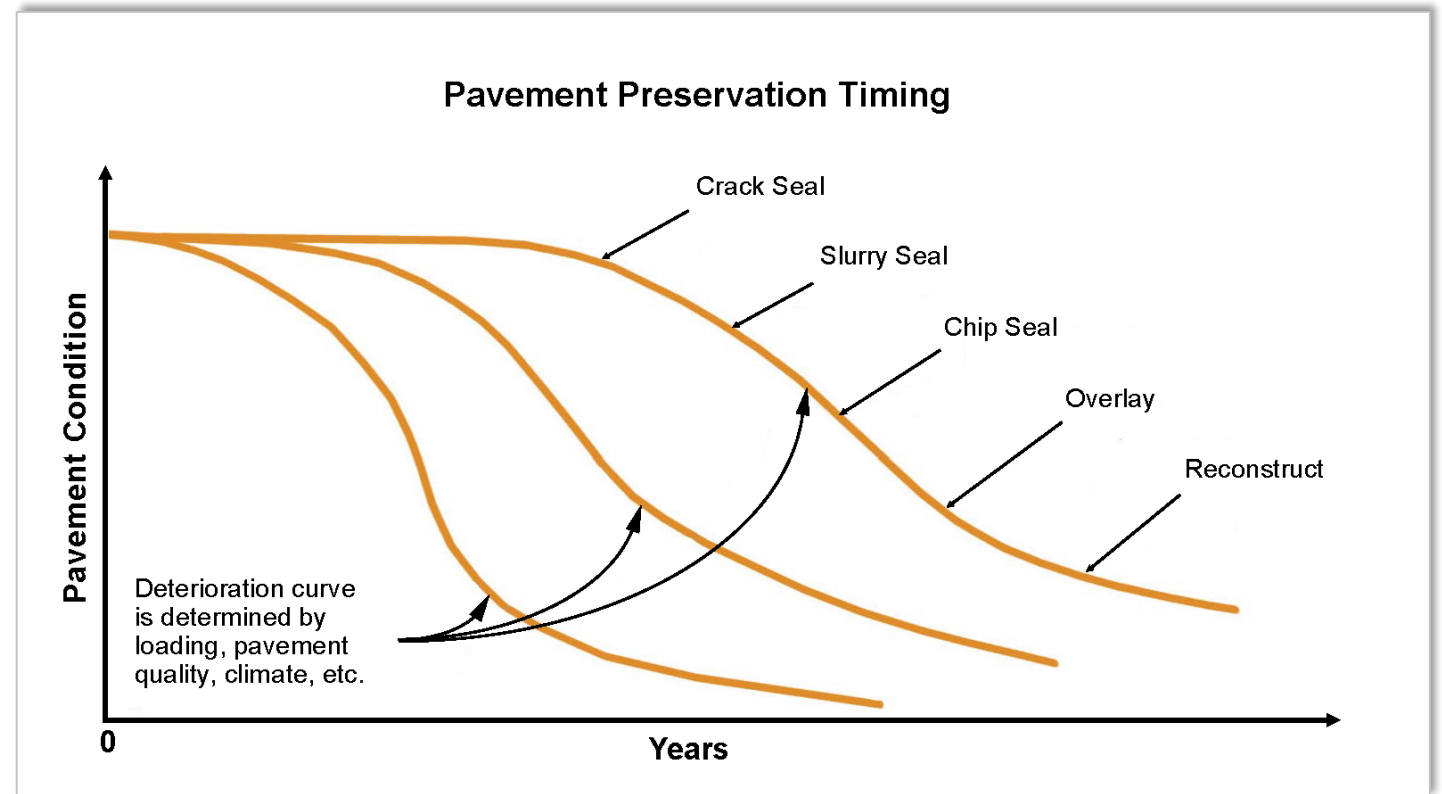
Weathering or
Raveling



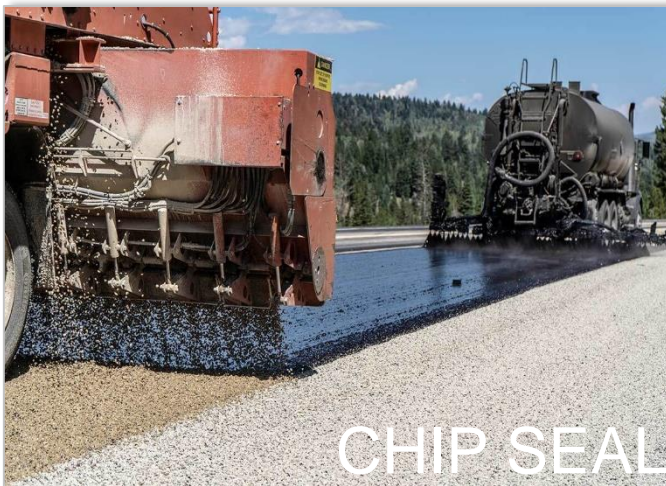
Block
Cracking

Best Management Practices

Applying the
RIGHT TREATMENT
to the
RIGHT PAVEMENT
at the
RIGHT TIME
using the
RIGHT MATERIALS

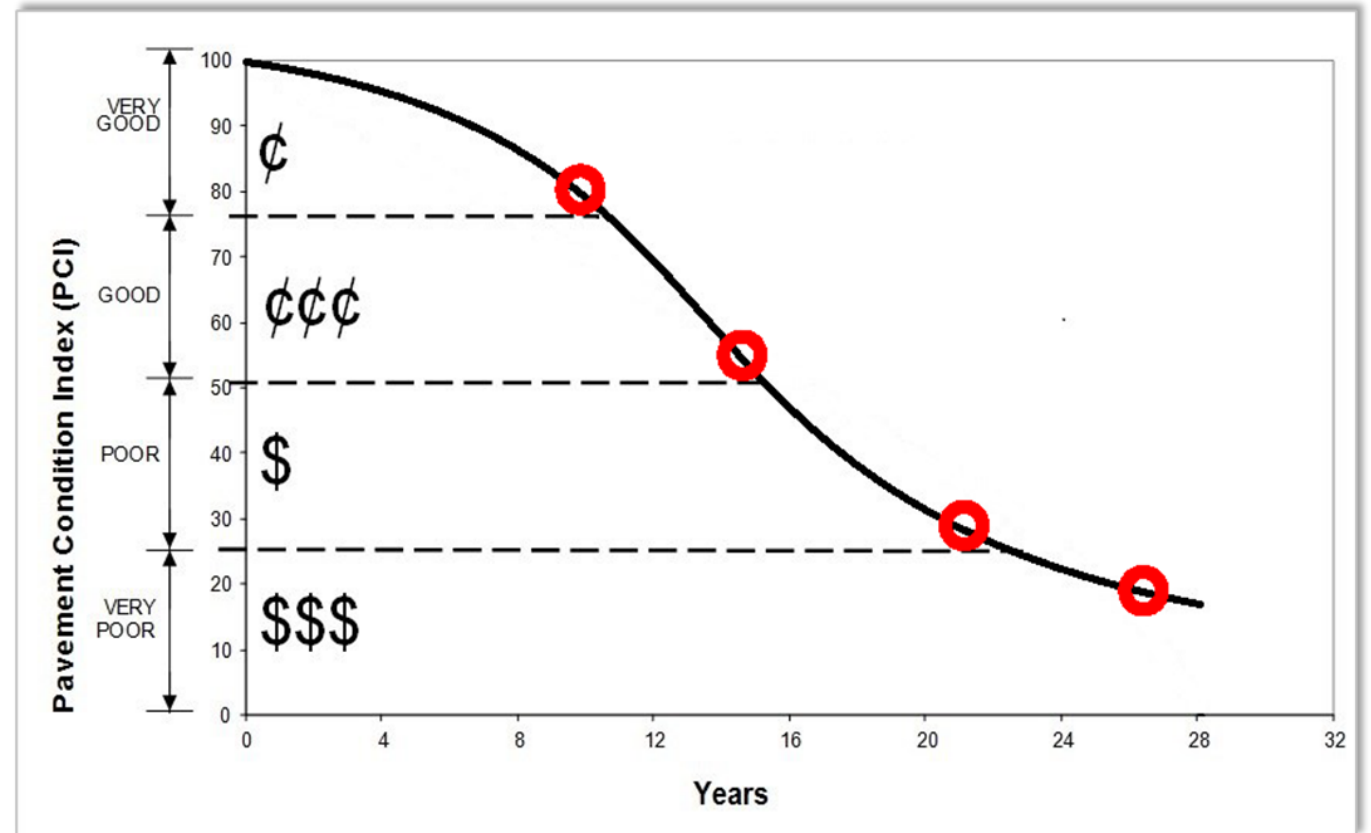


Treatment Types



Good Pavement Management

- Best-First - “Top Down”
- Worst-First - “Bottom Up”
- Critical-Point



Assessment Findings

Network Summary

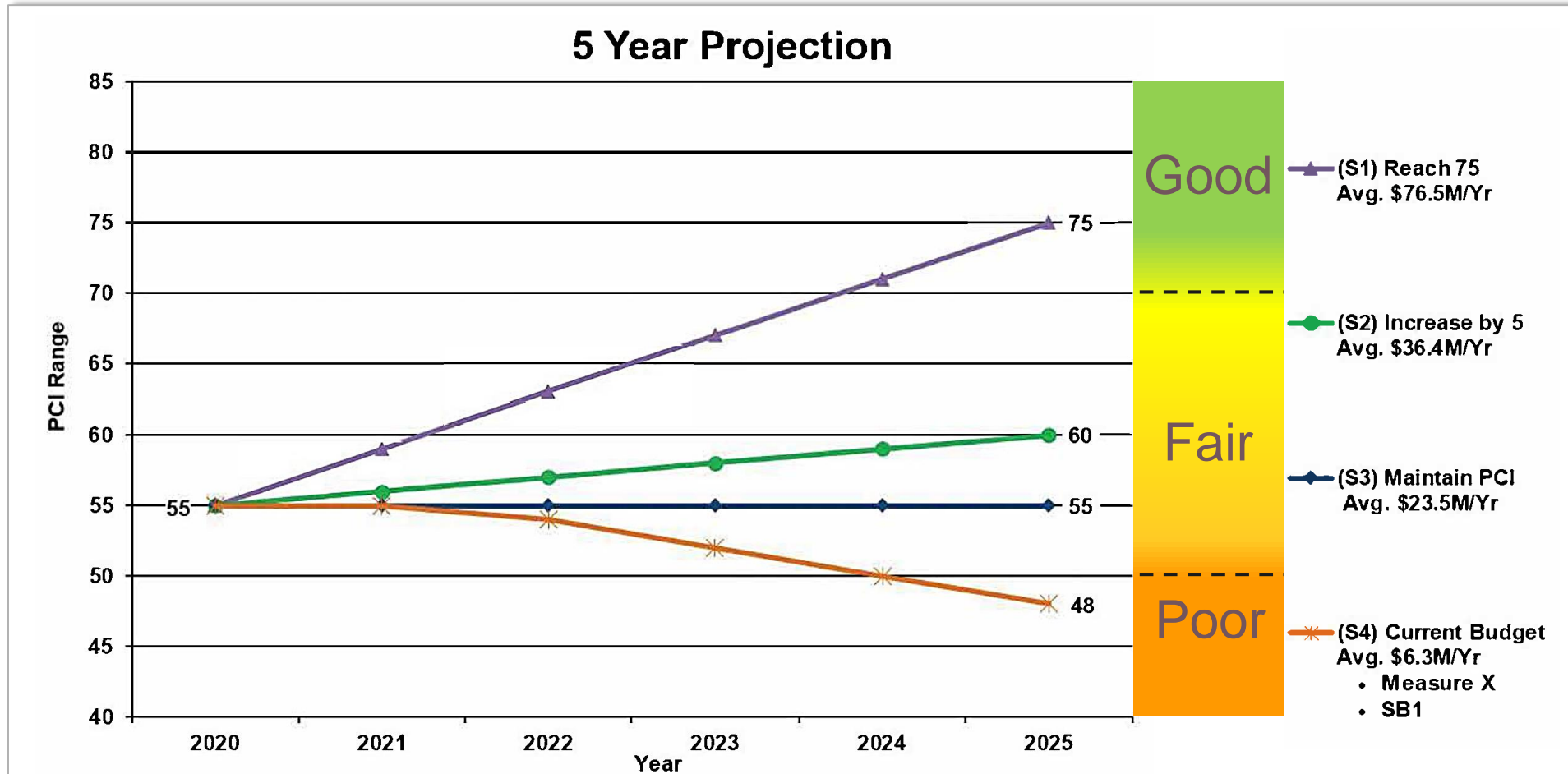
Functional Classification	Centerline Miles	Lane Miles	Area (sq. ft.)	Percent of System	Average PCI
Arterial	54.26	183.71	16,628,315	27.0%	60
Collector	62.16	138.24	13,397,482	21.8%	51
Residential	174.69	349.16	31,528,046	51.2%	54
Totals	291.1	671.1	61,553,843	100.00%	55

Estimated replacement value: \$1.3 billion

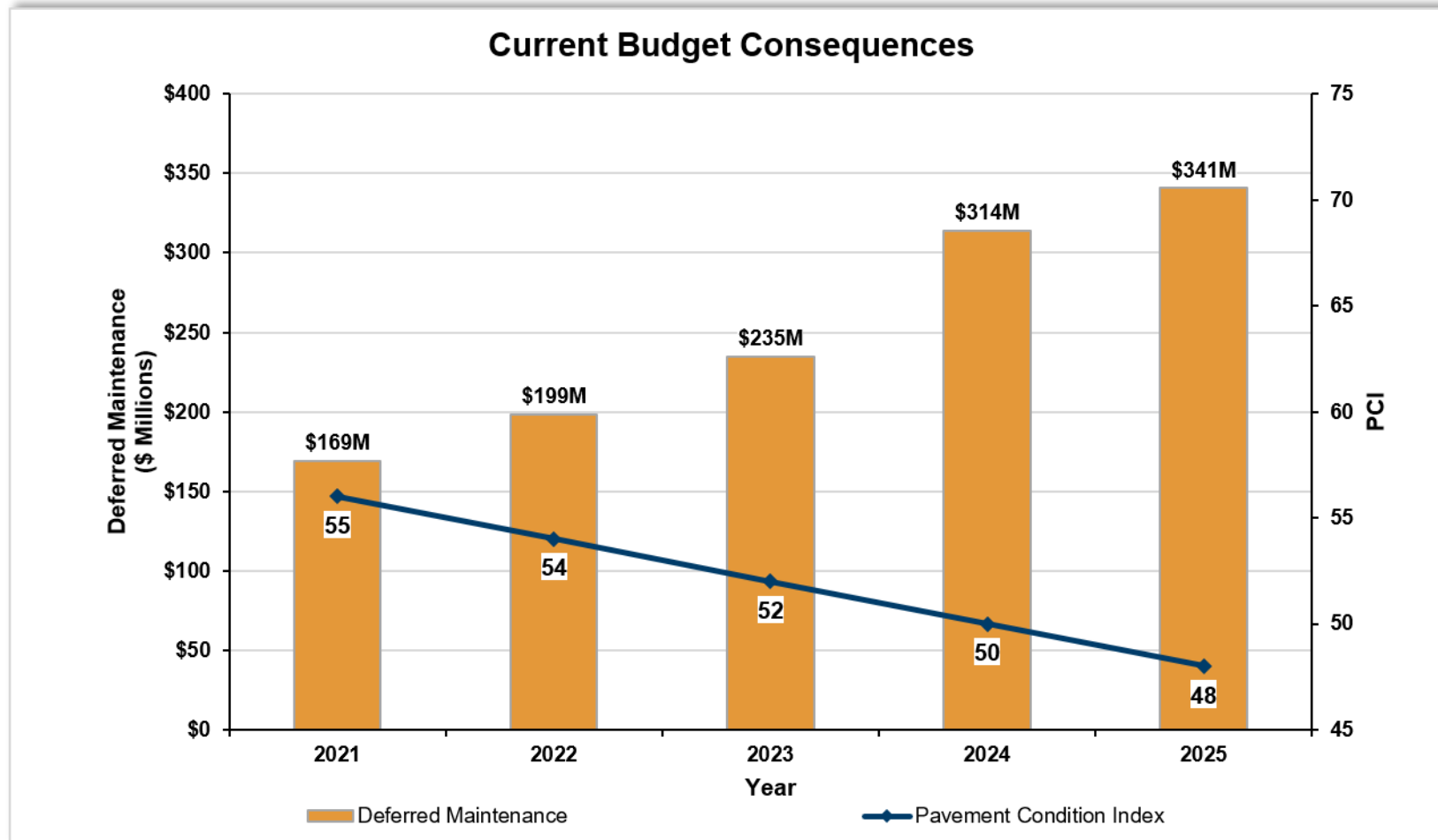
City Comparisons

City	Average PCI
County of Monterey	46
City of Gonzales	54
City of Salinas	55
City of Seaside	63
City of Monterey	69

Budget Impacts



Deferred Maintenance



Long-Term Recommendations

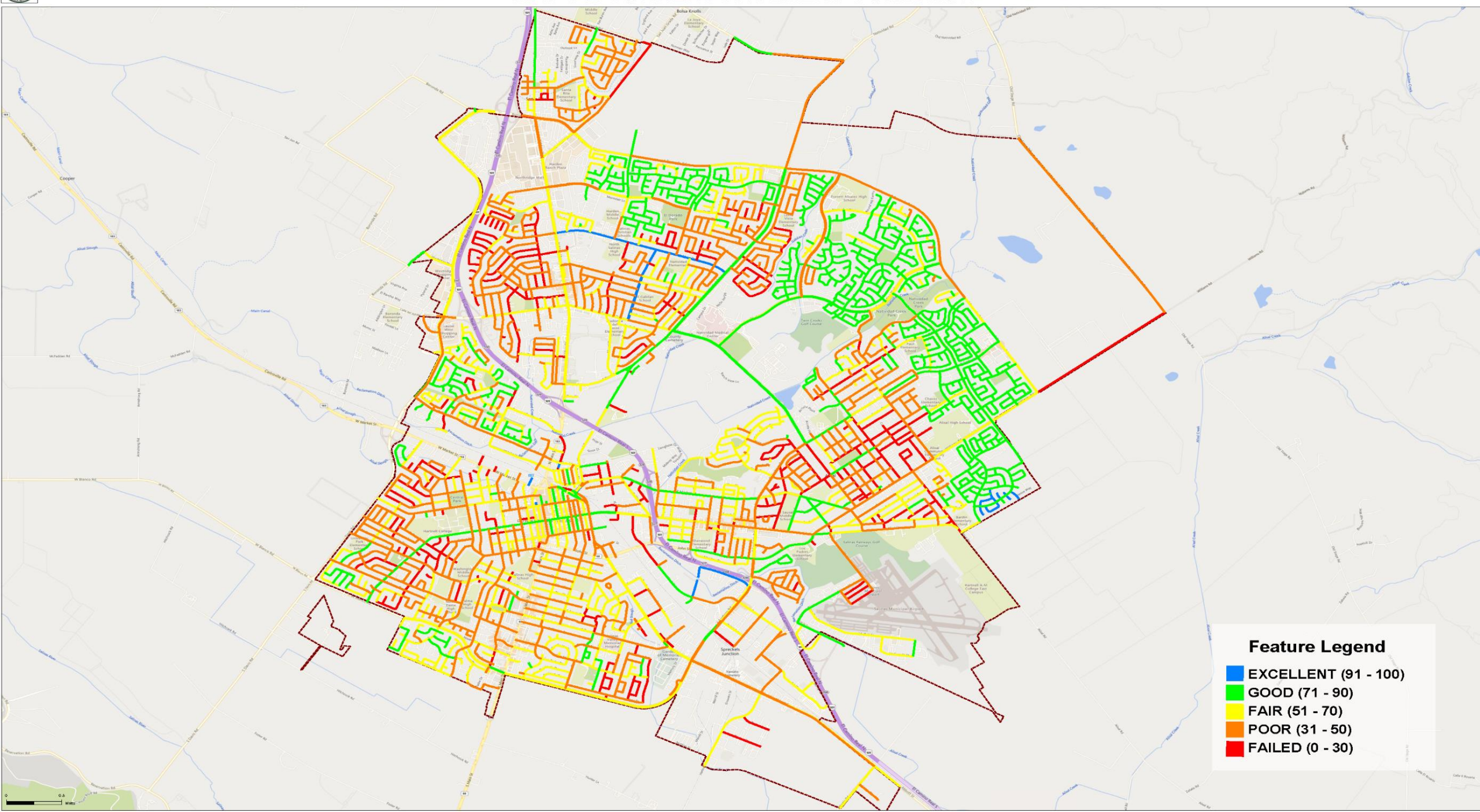
- Crack sealing program on all streets.
- Expand pavement preservation treatments.
- Implement a trench cut moratorium.
- Preserve critical assets.
- Prioritize streets by classification.
- Continue to leverage limited funds with grants.
- Defer pavement rehabilitation on grant-eligible streets.
- Consider additional funding sources.

Short-Term Recommendations

- Establish a consistent pavement maintenance / rehabilitation budget.
- Keep pavement management system current.
- Re-rate roads in a timely manner.
- Update maintenance and rehabilitation projects and costs.
- Develop a five-year plan.

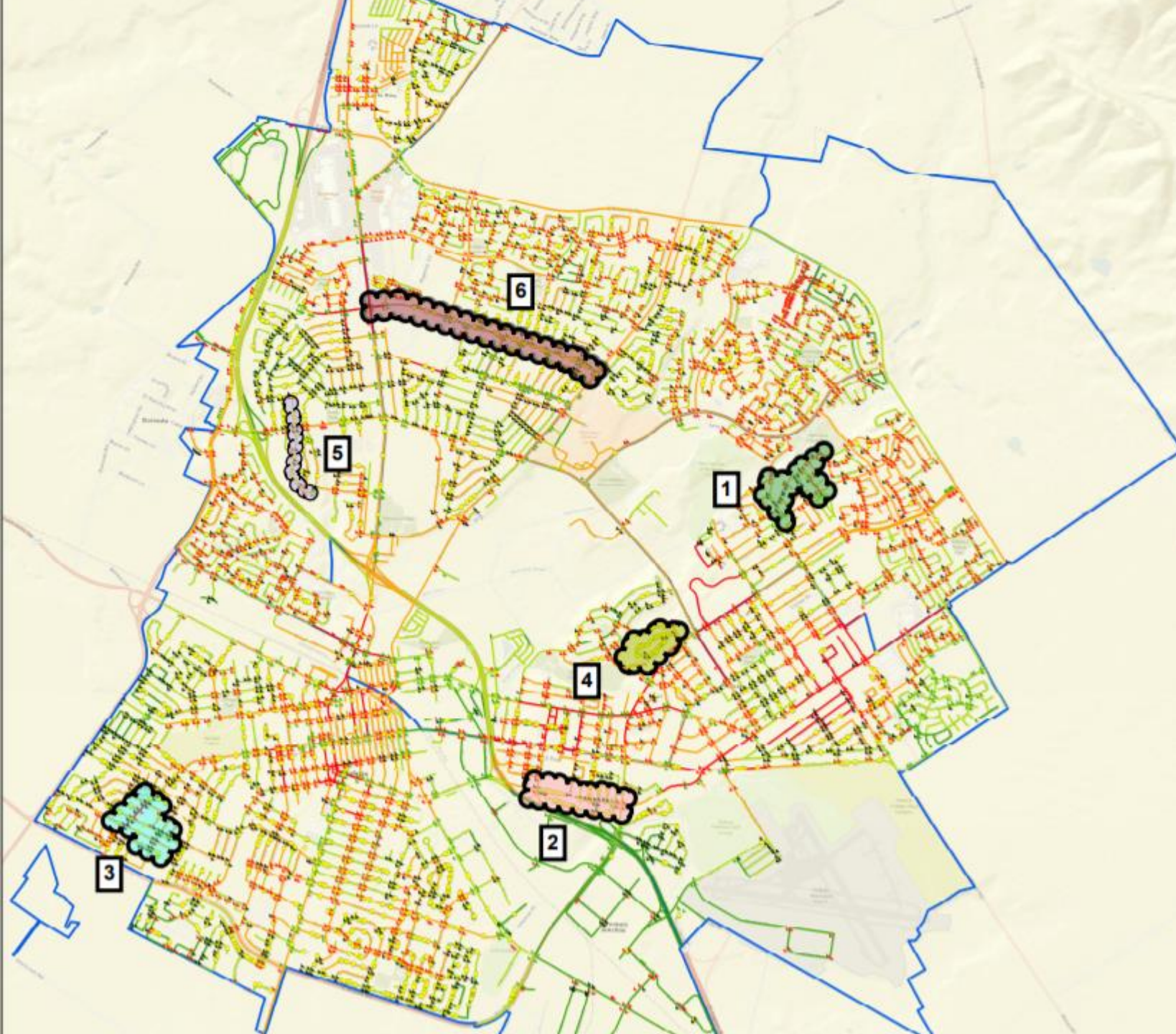


MAP #1: CURRENT PAVEMENT CONDITION







Feature Legend

- EXCELLENT (91 - 100)
- GOOD (71 - 90)
- FAIR (51 - 70)
- POOR (31 - 50)
- FAILED (0 - 30)



LEGEND:

FY 20/21 - JOC PROJECTS COMPLETED/IN-CONSTRUCTION:

-  DISTRICT 3 - SAN FELIPE ST/W ALISAL ST/AMBROSE DR/SIERRA MADRE DR
-  DISTRICT 2 - JOHN ST FROM N WOOD ST TO SANBORN RD
-  DISTRICT 4 - SUMMIT DR AND HILLTOP DR
-  DISTRICT 6 - E ALVIN DR FROM N MAIN ST TO NATIVIDAD RD

FY 21/22 - PLANNED JOC PROJECTS:

-  DISTRICT 1 - LAS CASITAS DR/NOGAL DR/AMARILLO WAY
-  DISTRICT 5 - POLK ST FROM TYLER ST TO TULANE ST

Legend

Ramp Status

-  Non Compliant Ramp
-  No Ramp
-  Compliant Ramp

Activity

-  0.0 - 25.0
-  25.1 - 50.0
-  50.1 - 75.0
-  75.1 - 100.0

-  Sidewalk Request
-  Council Districts

1 mile

Sidewalk Repair Request

